

Taylor University

Pillars at Taylor University

Taylor Theatre Playbills

Ongoing Events

11-9-2018

Into the Woods

Follow this and additional works at: <https://pillars.taylor.edu/playbills>



Part of the [Acting Commons](#), [Dance Commons](#), [Higher Education Commons](#), [Playwriting Commons](#), and the [Theatre History Commons](#)

Recommended Citation

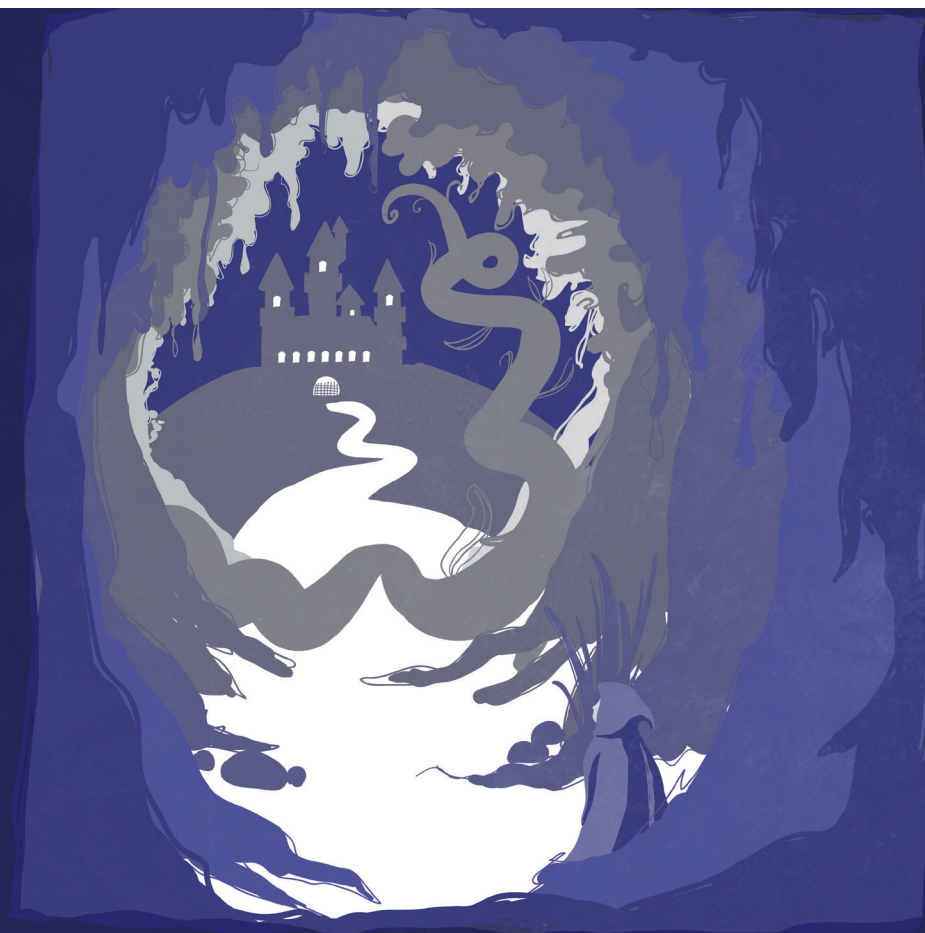
"Into the Woods" (2018). *Taylor Theatre Playbills*. 14.
<https://pillars.taylor.edu/playbills/14>

This Book is brought to you for free and open access by the Ongoing Events at Pillars at Taylor University. It has been accepted for inclusion in Taylor Theatre Playbills by an authorized administrator of Pillars at Taylor University. For more information, please contact pillars@taylor.edu.

TAYLOR UNIVERSITY'S

Mitchell Theatre

PRESENTS



INTO THE WOODS

MUSIC & LYRICS BY STEPHEN SONDHEIM
BOOK BY JAMES LAPINE

ORIGINALLY DIRECTED ON BROADWAY BY JAMES LAPINE
ORCHESTRATIONS BY JONATHAN TUNICK



Into the Woods, the 1988 Tony Award winner for both Score and Book of a musical, is a brilliantly conceived exploration of what happens after “happily ever after.” The show, which has an enchanting, moving and profound score by Stephen Sondheim, and a powerful, witty book by James Lapine, opened on Broadway on November 5, 1987, at the Martin Beck Theater under the direction of Mr. Lapine.

Into the Woods is a magical, imaginative adventure with a moral and political point of view. Employing sophisticated artistry and innovative craft, the show’s creators lead the audience on a journey to the darker side of fairy tales as they explore the pain of growing up, communal responsibility, and the values we pass on to our children. As the intricate, absorbing plot unfolds, a childless baker and his wife, cursed by a wicked witch, go off into the woods in hopes of ridding themselves of her evil influence. There they encounter Cinderella, her Prince, Little Red Ridinghood, the Wolf, Jack the Giant Killer, Rapunzel and other fairy tale characters who are attempting to realize wishes of their own. By the end of Act 1, everything seems to be blissfully, happily resolved. However, a destructive, vengeful force looms in the woods which leads to tragic consequences in the second act, bringing the characters to a painful, but hopeful resolution.

Filled with unexpected twists and dazzling insights, *Into the Woods* is a cautionary plea for commitment expressed through masterstrokes of theatrical magic. Subjects as diverse as the promise of perfect love, the foolhardiness of greed, and the loving but difficult relationship between parents and children are considered in a landscape shaded with psychological undertones...you’ll have a lot to talk about when you leave.

With tenderness and laughter, Sondheim and Lapine bring us through the maze that mirrors the complexity of everyday existence. Like the characters in *Into the Woods*, we end this journey aware of the ethical and moral consequences of our actions and the power of grace, community and shared

-Tracy Manning

MUSIC DIRECTOR



Dr. Patricia Robertson

Patricia Robertson, has served as music director for both the TU Lyric Theater and the Mitchell Theatre since 2002; for the Lyric Theatre she has led performances of *Gianni Schicchi*; *Amahl and the Night Visitors*, *Dido & Aeneas*, *Bartered Bride*, *Marriage of Figaro*, *La Perichole*, *Pirates of Penzance*, *Gondoliers* and for the Mitchell Theater *Kiss Me Kate*, *Godspell* and *A Christmas Carol*.

Her directing credits also include productions of *Così fan tutte* and *Dido and Aeneas* for the Boze Lyric Theatre at Anderson University. From 1989-1999 she served on the faculty of the Ball State Summer Theatre Festival, a semi-professional repertory company funded by the National Endowment for the Arts; with that company she provided support and direction for such productions as *1776*, *Bye Bye Birdie*, *Hello Dolly*, *Music Man*, *Oliver*, and *The Secret Garden*.

MUSIC CONSULTANT



Dr. Conor Angell

Born and raised in Ireland, baritone Conor Angell joined Taylor University's music faculty in the fall of 2013. Previously, he taught at Houghton College and Wabash College. Award winner in the 2013 Chicago Oratorio Competition and 2013 American Prize in Vocal Performance, he has also received awards in the Heafner-Williams Vocal Competition, NATS Competition, and Kentucky Bach Choir Vocal Competition, among others. While completing his doctoral degree at the Indiana University Jacobs School of Music, he appeared in numerous performances with IU Opera. Before his studies at IU, Angell was a studio artist at Kentucky Opera, singing roles in *Werther*, *Pirates of Penzance*, *Otello*, *Don Quichotte*, and *Iolanta*. Angell is an active performer in operas, recitals, and orchestral concerts throughout the eastern and Midwestern US. He completed his master's degree at UNC-Greensboro and his bachelor's degree at Taylor University.

CHOREOGRAPHER



Kory Lynn Browder

Kory Browder, a native of the Chicagoland area, is a graduate of Ball State University with a BS in Dance Performance and is currently a part of the Musical Theatre Faculty at Taylor University. Professionally, Kory's career includes performances with Carnival Cruise Lines, Cedar Point Entertainment, Ball State Dance Theatre, Ballet Legere; including roles in *The Nutcracker*, *Sleeping Beauty*, *Cinderella*, *Nosferatu: A Vampire Ballet*, *Damn Yankees* and excerpts from *Swan Lake* and *Raymonda*. She trained and studied with many notable instructors including Trinetta Singleton, Bill Evans, Ginger Farley, and Lou Ann Young, to name a few. She has been welcomed as a Master Instructor at Ball State University, Adjunct Faculty with Indiana Wesleyan University, Master Instructor for Regional Dance America, Assistant Director and Faculty with Anderson Young Ballet Theatre, and ballet instructor with Community School of the Arts in Marion, IN. Kory currently resides in Marion, with her supportive husband, Bobby Browder, and proud mother of children Evan and Ella.

SCENIC DESIGNER



*Cory Rodeheaver '99

Cory has been working as a freelance scenic designer for the past 19 years and is no stranger to Taylor Theatre having been involved with Taylor theatre for the past 24 years. Outside of Taylor Theatre, Cory has designed for many other companies, some of which include, the Champaign-Urbana Ballet Company, Summer Studio Theatre Company at the University of Illinois, Feltre Library Theatre in Chicago, Parkland College, and the University of Illinois Theatre department. Some other productions to his credit are: *The Hobbit*, *La Traviata*, *The Nutcracker*, *Aloha Say the Pretty Girls*, Tennessee Williams' *Spring Storm*, *Peter Pan*, *The Importance of Being Earnest*, *Tally's Folley*, *The Adventures of Tom Sawyer*, *A Midsummer Night's Dream*, *Urinetown the Musical*, *Into the Woods*, *Romeo & Juliet*, and *Proof*. Beyond the world of theatre, Cory has worked as the senior exhibit designer and art director at Taylor Studios Inc. designing award winning museum exhibits and themed environments across the country for 9 years. Currently, Cory is employed as a designer with the Spectrum Design Group based in Champaign, IL where he lives with his wife Jennifer and three children, Ethan, Emmy, and Ella. Cory holds an MFA in Scenic Design from the University of Illinois Urbana/Champaign.

PRODUCTION CONCEPT

For this production of *Into the Woods*, the design concept is focused around the ideas of Light, Shadow, and Silhouette. Specifically, each of these ideas, whether metaphorically or literally, support various themes presented and explored by characters throughout the production. Visually, these ideas are depicted using two dimensional, layered cut-outs which serve as the basis for the “woods world” in which our characters enter.

Into the woods...

Inspired by the art of cut paper light boxes, the white color of the scenery allows **light** to take a dominate role in defining mood, location, and time. The multi-layered, two-dimensional cut-outs of the scenery serve to create profiles which cast **shadows** when lit from one direction, but quickly become **silhouettes** when lit from behind.

Out of the woods...

In contrast, defined and realistic scenery create cottage interiors representing the world outside the woods. Character experiences and choices made while “in the woods” directly affect the visual appearance of their “outside worlds”.

And home before dark.

-Cory Rodeheaver

LIGHTING DESIGNER



Shane O'Neil

Shane is excited to be designing for the first time at Taylor University. After Graduating from the University of Wisconsin Eau Claire with a Degree in Technical Theater with an emphasis in Lighting Design, Shane has travelled the country working for companies such as The Milwaukee Repertory Theatre (WI), The Guthrie (MN), Champaign Urbana Ballet (IL), and Two River Theater Company (NJ). Based out of Milwaukee, WI, Shane is the Technical Director for In Tandem Theatre company,

Production Staff for the Sharon Lynne Wilson Center for the Arts, and freelances with other projects and companies. In his free time you can find him outside biking, cooking new recipes, exploring cities and playing with his cat Keiko.

HAIR AND MAKEUP DESIGNER



Sarah E. Bussard

Sarah is a Costume and Makeup Designer who also trained as a wigmaker at the University of Cincinnati-College Conservatory of Music where she received her M.F.A. in Design. Her work also includes opera (Sarasota Opera, Cincinnati Opera, Chautauqua Opera), film and video (The American Experience for PBS, Silk Trees [Evermore Pictures], Evaluating Kaitly and 177, [Runaway Pen Productions]).

She previously served as design and production faculty for East Texas Baptist University. Currently she serves as the Makeup and Wig Designer for the Notre Dame Shakespeare Festival. Recent designs include *Raisin in the Sun* (Indiana Repertory Theatre), *Fiddler on the Roof* (Bethel College), *The Importance of Being Earnest* (Notre Dame), *Metamorphoses*, *Urinetown*, *The 39 Steps* (ETBU Theatre), and *The Magic Flute* (Northwestern University). She's excited to collaborate with the production team and company of Taylor Theatre for a second time!

TECHNICAL DIRECTOR



*Terrance Volden

Terrance has been the Technical Director for Taylor Theatre since 2012. After graduating from Sterling College in 2008 with a Bachelor of Arts in Communication and Theatre, he spent 3 years working outside of Chiclayo, Peru as a missionary with Latin American Children's Fund. He worked as a teacher, pastor, and translator and continues his work with LACF in various ways including a growing partnership between LACF and Taylor Theatre. In 2012,

Terrance obtained education licenses in both Theatre and Vocal Music. His theatre credits outside of TU include set design, acting, and teaching *commedia del'arte* workshops across Oklahoma and Kansas. While at Taylor, Terrance has done scenic design for *The Matchmaker*, *Oklahoma!*, *Waiting for Godot*, *Freud's Last Session*, *The Cherry Orchard*, *Wit*, and *Arab Israeli Cookbook* and has directed *Cyrano de Bergerac* and *The Servant of Two Masters*. In 2017, Terrance was awarded a national commendation from the Kennedy Center College Theatre Festival for Distinguished Achievement in Technical Direction for his work on Taylor Theatre's production of *Rabbit Hole*.

STAGE MANAGER & ASSISTANTS TO THE DIRECTOR



* Suzie Quinn - Stage Manager

Susannah is a senior Theatre Arts major from Fort Lauderdale, FL. Her Taylor Theatre credits include *Mary Poppins*, *Why We Must Die So Young*, *Cyrano de Bergerac*, *Oklahoma!*, *Night Watch*, *A Midsummer Night's Dream*, *When the Rain Stops Falling*, *Rabbit Hole*, and *The Marriage of Figaro*. She would like to give a special thanks to her family.



Lynreshay Johnson - Assistant to the Director

Lynreshay is a junior Theatre Arts major from Nassau, Bahamas. Her previous show credits include ASM for *The Matchmaker*, Deck Captain for *Why We Must Die So Young*, Mrs. Corry in *Mary Poppins*, and House Manager for the 2017-2018 theatre season.



*Emma Wagoner - Assistant to the Director

Emma is a Senior Theatre Arts major here at Taylor University. After she graduates she wants to pursue a career in drama therapy. This is her first time Assistant Directing a show but her previous credits reside in the tech world including Assistant Stage Managing, Deck Crew, Props Master, and Stage Managing shows such as *Antigone*, *Clybourne Park*, and for the upcoming Spring show *The Mousetrap*. She would like to thank God and His faithfulness throughout this past summer and this school year and Lauren Vock and Anna Kaye Schulte for being two

of the strongest, most dedicated women she knows and loves.

2018-2019 SEASON THEATRE AND OPERA PRODUCTIONS

She Loves Me

February 1-3

(Tickets available by calling 765-998-5232)

Metamorphoses

February 22-24, March 1-3

The Mousetrap

April 26-28, May 3-5

CAST

Baker	*Steven Mantel
Baker's Wife	*Anna Kaye Schulte
Witch	*Tracy Manning
Mysterious Man/Narrator	Conor Angell
Cinderella	Madeline Logan
Jack	*Andrew Baker
Little Red	Faith Marsh
Jack's Mother	Lauren Vock
Cinderella's Prince/Wolf	*Brandt Maina
Rapunzel's Prince	*John Broda
Stepmother	Elizabeth Carrier
Florinda	*Evangeline Bouw
Lucinda	Emma Dahlquist
Rapunzel	Julia Rosenquist
Steward	*Bradley Jensen
Cinderella's Father	Andrew Wulf
Cinderella's Mother	Paige Kennedy
Granny	Brielle Fowlkes
Snow White	Bailey Miles
Sleeping Beauty	Victoria Koro
Voice of Giant	Patricia Robertson

INTO THE WOODS

is presented through special arrangement with Music Theatre International (MTI)

All authorized performance materials are also supplied by MTI.

www.MTIShows.com

The videotaping or other video or audio recording of
this production is strictly prohibited.

***Denotes Alpha Psi Omega Membership, National Theatre Honor Society**

TAYLOR ORCHESTRA

Chris Douglas	Bass
Maki Ohashi	Cello
Naomi Page	Synthesizer
Evan Fine	Percussion
Ethan Garratt	Percussion
Rebekah Settles	Flute
Stephen Christophersen	Clarinet
Christina Kim	Trumpet
Savannah Ireland	Viola
Luke Sorrell	Viola
Analiese Helms	Violin
Colton Urbanski	Violin
Katie Hershberger	Violin
Clif Davis	Piano
Geoff Nelson	Horn
John Higgins	Horn
Michael Pittman	Bassoon

ACKNOWLEDGEMENTS

Sara Bailey
Sarah Bussard
Upland Print and Stitch
Taylor University Facilities Services

PLEASE NOTE
Haze and fog will be
used during this production.



***Steven Mantel**

Steven is a junior BFA Musical Theatre major from Bartlett, IL. His past Taylor Theatre credits include *Oklahoma!*, *The Matchmaker*, *Clybourne Park*, and *Mary Poppins* and Taylor Lyric Theatre's *The Pirates of Penzance*. He would like to thank his family, the cast and the crew.



***Anna Kaye Schulte**

Anna Kaye is a senior History major from Brentwood, TN. Her Taylor Theatre credits include *Mary Poppins*, *Oklahoma!*, and Taylor Lyric theatre productions, and she has been in Student Directed shows since freshman year. She gives a special thanks "to my family and the Lord for His faithfulness, and for Taylor Theatre for welcoming me into their family for the past four years."



Conor Angell

Dr. Conor Angell teaches voice in the Department of Music, Theatre, and Dance. He has been music director and director for musicals and operas at Taylor, and is thrilled to be sharing the stage with his students for the first time as a performer. Special thanks to Kerri, Elias, and Miriam for helping him learn lines and loving him endlessly.



Madeline Logan

Madeline is a sophomore Musical Theatre major from Wichita, KS, and is pursuing a BFA. Her past Taylor Theatre credits include *Cyrano de Bergerac* and *Mary Poppins* and Taylor Lyric Theatre's *The Pirates of Penzance*. She would like to give a special thanks to "my parents for encouraging me and my Savior for equipping me."



***Andrew Baker**

Andrew is a junior Musical Theatre major from Northbridge, MA. he is working toward a BFA. His past Taylor Theatre credits include *Cyrano de Bergerac*, *The Matchmaker*, *Oklahoma!*, *Why We Must Die So Young*, and *Mary Poppins* and Taylor Lyric Theatre's *The Pirates of Penzance*. Andrew would like to thank Mary Dykstra, Lisa Scarlett, and his parents.



Faith Marsh

Faith is a freshman Mechanical Engineering major from Cincinnati, OH. Her past Theatre experiences include *The Miracle Worker*, *A Midsummer Night's Dream*, *Alice in Wonderland*, *Meet Me in St. Louis*, and *Horizons of Gold*. She would like to thank "my mom, my director Beth Kennivi, and my Savior with whom all things are possible."



Lauren Vock

Lauren is a senior Worship Arts major with a Theatre minor from North Prairie, WI. Her Taylor Theatre credits include *Mary Poppins*, *Oklahoma!*, and *The Marriage of Figaro* and Taylor Lyric Theatre's *The Pirates of Penzance*, *Gianni Schicchi*, and *Working*. She gives a special thanks to the Lord, her family, and her directors.



***Brandt Maina**

Brandt is a junior Musical Theatre major from Nairobi, Kenya and is pursuing a BFA. His past Taylor Theatre credits include *Antigone*, *Cyrano de Bergerac*, *Clybourne Park*, *When the Rain Stops Falling*, *Why We Must Die So Young*, and *Mary Poppins* and Taylor Lyric Theatre's *The Pirates of Penzance* (Pirate King) and *Gianni Schicchi* (Betto). He would like to thank his professors, directors, the men of Third Center Wengatz, and Brielle Fowlkes.



***John Broda**

John is a junior Musical Theatre major pursuing a BFA. He is from Spring Arbor, MI. His past Taylor Theatre credits include *Oklahoma!*, *Cyrano de Bergerac*, *The Matchmaker*, *Why We Must Die So Young*, and *Mary Poppins* and Taylor Lyric Theatre's *Pirates of Penzance*. He would like to extend "unending thanks to my family for their unwavering support, I love you. Thanks to God for another story to tell and an incredible community to tell it with."



Elizabeth Carrier

Elizabeth is a sophomore Theatre Arts major from Granger, IN. Her past Taylor Theatre credits include *Cyrano de Bergerac*, *Why We Must Die So Young*, and *Mary Poppins*, and she has helped on production staff for several productions.



***Evangeline Bouw**

Evangeline is a junior Theatre Arts and Studio Art major originally from Nampa, ID. Her past Taylor Theatre credits include *Antigone*, *When the Rain Stops Falling*, *The Matchmaker*, *Cyrano de Bergerac*, and *Why We Must Die So Young*. She would like to thank her parents and God.



Emma Dahlquist

Emma is a freshman Theatre major from Rochester, IN. Her Theatre credits before attending Taylor include *Robin Hood*, *Murder's in the Heir*, *Annie Get Your Gun*, *Arsenic and Old Lace*, *Into the Woods*, *The Importance of Being Ernest*, and *Cinderella*. Emma would like to give a special thanks to her mom, dad, and brother.



Julia Rosenquist

Julia is a freshman Vocal Performance major from Hartland, WI. Her past theatre involvement includes *Once Upon a Mattress*, *Once on this Island*, and *Little Shop of Horrors*. She would like to thank her mom, dad and her voice instructors.



***Bradley Jensen**

Bradley is a senior Theatre arts major from Alexandria, IN. His Taylor Theatre credits include *Why We Must Die So Young*, *Oklahoma!*, and *Antigone* and Taylor Lyric Theatre's *The Pirates of Penzance*. He has served as Costume Shop Supervisor and Costume Designer this season and last.



Andrew Wulf

Andrew is a junior Theatre Arts major from Columbus, OH. His past Taylor Theatre credits include *The Matchmaker*, *Mary Poppins*, *Cyrano de Bergerac*, and *Why We Must Die So Young* and Taylor Lyric Theatre's *The Pirates of Penzance*. He would like to give a special thanks to his mom and dad.

**Paige Kennedy**

Paige is a senior Music Education (Choral) major from Romeoville, IL. Her Taylor Theatre credits include *Oklahoma!* and Taylor Lyric Theatre's *Gianni Schicchi*, *Le Nozze di Figaro*, and *The Pirates of Penzance*. She would like to give a special thanks to her parents.

**Brielle Fowlkes**

Brielle is a junior Theatre major from Muncie, IN. Her past Taylor Theatre credits include *Clybourne Park* and *Mary Poppins* and Taylor Lyric Theatre's *The Pirates of Penzance*. She would like to give a special thanks to her Taylor family.

**Bailey Miles**

Bailey is a freshman Spanish Education major from Pendleton, IN. Her past theatre credits include *Mary Poppins*, *Grease*, *The Little Mermaid*, *Annie Get Your Gun*, *High School Musical*, and *See How They Run*. She would like to give a special thanks to Jacque Brown, Jim McGee, and her parents James and Rebecca Miles.

**Victoria Koro**

Victoria is a Musical Theatre major from Traverse City, MI. Her past Taylor Theatre credits include *Cyrano de Bergerac* and *Mary Poppins* and Taylor Lyric Theatre's *The Pirates of Penzance*.

PRODUCTION STAFF

Artistic Director.....	*Tracy Manning
Music Director.....	Patricia Robertson
Technical Director.....	*Terrance Volden
Music Consultant.....	Conor Angell
Scenic Designer.....	*Cory Rodeheaver
Lighting Designer.....	Shane O'Neil
Hair and Makeup Designer.....	Sarah Bussard
Choreographer.....	Kory Browder
Assistants to the Director/Dramaturge.....	Lynreshay Johnson *Emma Wagoner
Stage Manager.....	*Suzie Quinn
Assistant Stage Managers	Kate Johnson Jessica Hoffmeister
Deck Crew.....	Jessica Hoffmeister Lindsay Rice Joy Lemont Lauryn Terry Faith Seltzer Amanda Hotte
Master Carpenter.....	*Andrew Baker Hailey Hamilton Rachel Teal
Charge Scenic Artist.....	Madeline Logan Faith Seltzer Andrew Wulf Faith Marsh Kate Johnson Ethan Rice Amanda Hotte

***Denotes Alpha Psi Omega Membership, National Theatre Honor Society**

PRODUCTION STAFF

Properties Masters.....**Lauren Vock**
Maiya Szotkowski**Lindsay Rice**
Kylie Delong *Evangeline Bouw (Milky White)
Sue Vock *Darah Shepherd
Steve Vock *Emma Wagoner
Hanna Lichacz

Master Electrician.....***Ty Kinter**
Ryan Costello
 Jackson Bonnett
 Madison Howland
 Megan Elliott
 Kate Lawrence
 Bekah Spears

Costume Shop Supervisor.....***Bradley Jensen**
 Stitches- Hannah Embree, Victoria Koro, Lindsay Rice, Bradley Jensen
 Dressers- Hannah Embree, Sadie Schultz, Victoria Koro, Faith Seltzer

Sound Designer.....**Ethan Rice**
Sarah Gorski
Hannah Fortin

Hair and Makeup Artist.....**Liz Carrier**
Victoria Koro
Bailey Miles
Sadie Schultze
Shaniese Miller

Poster Design.....**Naomi Noyes**

Photographer.....**Abigail Moore**

Box Office and Marketing..... **Hannah Frase**

House Manager.....			*Brandt Maina
Katherine Sanchez	Desirae Crouch	Cordell King	Harli Broge
Jed Barber	Ella Crouch	Meghann Rauser	Maggie Cripe
Laura Jeggle	Rachel Blagg	Katherine Turner	Maddie Hartz
Lakeisha Eglau	Mary Newenhisen	Jessica Dundas	Benjamin Page
Sophia Guo	Abigail Pyle	Daniel McHenney	Amanda Dibley
Kaitlyn Herald	Luke Seeman	Kyrie Lewis	Grace Bennet
Megan Herrema	Isabel Cook	Benj Morris	Katherine Kunz
Kelsey Moody	Jeanna Evans	Rachel Knight	Samantha Collins
Olivia Chamberlain	Elizabeth Yeiter	Emily Knight	Michaela Stenerson
		Abby Chandler	Kelly Abraham

*Denotes Alpha Psi Omega Membership, National Theatre Honor Society



The Kennedy Center American College Theater Festival, part of the Rubenstein Arts Access Program, is generously funded by
David M. Rubenstein.

Special thanks to The Harold and Mimi Steinberg Charitable Trust for supporting the John F. Kennedy Center for the Performing Arts' Kennedy Center American College Theater Festival.

Additional support is provided by The Honorable Stuart Bernstein and Wilma E. Bernstein; and the Dr. Gerald and Paula McNichols Foundation.

Kennedy Center education and related artistic programming is made possible through the generosity of the National Committee for the Performing Arts.

This production is entered in the Kennedy Center American College Theater Festival (KCACTF). The aims of this national theater education program are to identify and promote quality in college-level theater production. To this end, each production entered is eligible for a response by a regional KCACTF representative, and selected students and faculty are invited to participate in KCACTF programs involving scholarships, internships, grants and awards for actors, directors, dramaturgs, playwrights, designers, stage managers and critics at both the regional and national levels.

Productions entered on the Participating level are eligible for invitation to the KCACTF regional festival and may also be considered for national awards recognizing outstanding achievement in production, design, direction and performance.

Last year more than 1,500 productions were entered in the KCACTF involving more than 200,000 students nationwide. By entering this production, our theater department is sharing in the KCACTF goals to recognize, reward, and celebrate the exemplary work produced in college and university theaters across the nation.