

Taylor University

Pillars at Taylor University

Academic Catalogs (TUFW & Predecessors)

Publications for TUFW and Predecessors

1-1-1929

Fort Wayne Bible Training School Catalog

Fort Wayne Bible Training School

Follow this and additional works at: <https://pillars.taylor.edu/tufw-catalogs>



Part of the [Higher Education Commons](#)

Recommended Citation

Fort Wayne Bible Training School, "Fort Wayne Bible Training School Catalog" (1929). *Academic Catalogs (TUFW & Predecessors)*. 35.

<https://pillars.taylor.edu/tufw-catalogs/35>

This Book is brought to you for free and open access by the Publications for TUFW and Predecessors at Pillars at Taylor University. It has been accepted for inclusion in Academic Catalogs (TUFW & Predecessors) by an authorized administrator of Pillars at Taylor University. For more information, please contact pillars@taylor.edu.

Registrar

Twenty-Fifth Anniversary Catalog

Fort Wayne Bible Training School

1929-30



*Training for Service
and
Service in Training*

Fort Wayne, Indiana

Key to Grading:

| | |
|---|-----------|
| A | 95-100% |
| E | 90-94% |
| G | 80-89% |
| F | 70-79% |
| P | Below 70% |

Twenty-Fifth Anniversary
Catalog

of the

Bible Training School



Fort Wayne, Indiana

SCHOOL BOARD

| | |
|----------------------------------|------------------|
| REV. WM. EGLE, Chairman. | Berne, Ind. |
| REV. G. R. SCHROEDER, Secretary. | Cleveland, Ohio |
| REV. C. L. EICHER | Chicago, Ill. |
| REV. S. J. GRABILL. | Fort Wayne, Ind. |
| REV. A. B. YODER. | Elkhart, Ind. |
| REV. J. K. GERIG. | Chicago, Ill. |
| REV. J. A. RINGENBERG. | Grabill, Ind. |
| REV. L. H. ZIEMER. | Toledo, Ohio |
| REV. H. E. TROPF. | Detroit, Mich. |

OFFICERS

| | |
|----------------------|--------------------------------|
| REV. J. E. RAMSEYER | President |
| REV. B. F. LEIGHTNER | Dean |
| REV. P. L. EICHER | Treasurer and Business Manager |
| MRS. BERTHA LUGIBIHL | Matron |

FACULTY

REV. J. E. RAMSEYER
Lectures on Deeper Christian Life

REV. B. F. LEIGHTNER
Doctrine and Exposition

REV. JACOB HYGEMA
Synthetic Bible and Typology

REV. BYRON G. SMITH
Homiletics and Hermeneutics

REV. S. A. WITMER
History and Missions

MISS LILLIAN ZELLER
English

MRS. BYRON G. SMITH
Languages

PROF. C. A. GERBER
Music

PROF. RAYMOND WEAVER
Piano

| JANUARY | | | | | | |
|---------|-----|----|----|----|-----|-----|
| S | M | T | W | T | F | S |
| --- | --- | 1 | 2 | 3 | 4 | 5 |
| 6 | 7 | 8 | 9 | 10 | 11 | 12 |
| 13 | 14 | 15 | 16 | 17 | 18 | 19 |
| 20 | 21 | 22 | 23 | 24 | 25 | 26 |
| 27 | 28 | 29 | 30 | 31 | --- | --- |

| FEBRUARY | | | | | | | 1 |
|----------|-----|-----|-----|-----|-----|-----|---|
| S | M | T | W | T | F | S | |
| --- | --- | --- | --- | --- | 1 | 2 | |
| 3 | 4 | 5 | 6 | 7 | 8 | 9 | |
| 10 | 11 | 12 | 13 | 14 | 15 | 16 | 9 |
| 17 | 18 | 19 | 20 | 21 | 22 | 23 | |
| 24 | 25 | 26 | 27 | 28 | --- | --- | |

| MARCH | | | | | | | 2 |
|-------|-----|-----|-----|-----|-----|-----|---|
| S | M | T | W | T | F | S | |
| --- | --- | --- | --- | --- | 1 | 2 | |
| 3 | 4 | 5 | 6 | 7 | 8 | 9 | |
| 10 | 11 | 12 | 13 | 14 | 15 | 16 | |
| 17 | 18 | 19 | 20 | 21 | 22 | 23 | 9 |
| 24 | 25 | 26 | 27 | 28 | 29 | 30 | |
| 31 | --- | --- | --- | --- | --- | --- | |

| APRIL | | | | | | |
|-------|----|----|-----|-----|-----|-----|
| S | M | T | W | T | F | S |
| --- | 1 | 2 | 3 | 4 | 5 | 6 |
| 7 | 8 | 9 | 10 | 11 | 12 | 13 |
| 14 | 15 | 16 | 17 | 18 | 19 | 20 |
| 21 | 22 | 23 | 24 | 25 | 26 | 27 |
| 28 | 29 | 30 | --- | --- | --- | --- |

| MAY | | | | | | |
|-----|-----|-----|----|----|----|-----|
| S | M | T | W | T | F | S |
| --- | --- | --- | 1 | 2 | 3 | 4 |
| 5 | 6 | 7 | 8 | 9 | 10 | 11 |
| 12 | 13 | 14 | 15 | 16 | 17 | 18 |
| 19 | 20 | 21 | 22 | 23 | 24 | 25 |
| 26 | 27 | 28 | 29 | 30 | 31 | --- |

| JUNE | | | | | | | 1 |
|------|-----|-----|-----|-----|-----|-----|---|
| S | M | T | W | T | F | S | |
| --- | --- | --- | --- | --- | --- | 1 | |
| 2 | 3 | 4 | 5 | 6 | 7 | 8 | |
| 9 | 10 | 11 | 12 | 13 | 14 | 15 | 9 |
| 16 | 17 | 18 | 19 | 20 | 21 | 22 | |
| 23 | 24 | 25 | 26 | 27 | 28 | 29 | |
| 30 | --- | --- | --- | --- | --- | --- | |

| JULY | | | | | | | 2 |
|------|----|----|----|-----|-----|-----|---|
| S | M | T | W | T | F | S | |
| --- | 1 | 2 | 3 | 4 | 5 | 6 | |
| 7 | 8 | 9 | 10 | 11 | 12 | 13 | |
| 14 | 15 | 16 | 17 | 18 | 19 | 20 | 9 |
| 21 | 22 | 23 | 24 | 25 | 26 | 27 | |
| 28 | 29 | 30 | 31 | --- | --- | --- | |

| AUGUST | | | | | | |
|--------|-----|-----|-----|----|----|----|
| S | M | T | W | T | F | S |
| --- | --- | --- | --- | 1 | 2 | 3 |
| 4 | 5 | 6 | 7 | 8 | 9 | 10 |
| 11 | 12 | 13 | 14 | 15 | 16 | 17 |
| 18 | 19 | 20 | 21 | 22 | 23 | 24 |
| 25 | 26 | 27 | 28 | 29 | 30 | 31 |

| SEPTEMBER | | | | | | |
|-----------|----|-----|-----|-----|-----|-----|
| S | M | T | W | T | F | S |
| 1 | 2 | 3 | 4 | 5 | 6 | 7 |
| 8 | 9 | 10 | 11 | 12 | 13 | 14 |
| 15 | 16 | 17 | 18 | 19 | 20 | 21 |
| 22 | 23 | 24 | 25 | 26 | 27 | 28 |
| 29 | 30 | --- | --- | --- | --- | --- |

| OCTOBER | | | | | | |
|---------|-----|----|----|----|-----|-----|
| S | M | T | W | T | F | S |
| --- | --- | 1 | 2 | 3 | 4 | 5 |
| 6 | 7 | 8 | 9 | 10 | 11 | 12 |
| 13 | 14 | 15 | 16 | 17 | 18 | 19 |
| 20 | 21 | 22 | 23 | 24 | 25 | 26 |
| 27 | 28 | 29 | 30 | 31 | --- | --- |

| NOVEMBER | | | | | | |
|----------|-----|-----|-----|-----|----|----|
| S | M | T | W | T | F | S |
| --- | --- | --- | --- | --- | 1 | 2 |
| 3 | 4 | 5 | 6 | 7 | 8 | 9 |
| 10 | 11 | 12 | 13 | 14 | 15 | 16 |
| 17 | 18 | 19 | 20 | 21 | 22 | 23 |
| 24 | 25 | 26 | 27 | 28 | 29 | 30 |

| DECEMBER | | | | | | |
|----------|----|----|-----|-----|-----|-----|
| S | M | T | W | T | F | S |
| 1 | 2 | 3 | 4 | 5 | 6 | 7 |
| 8 | 9 | 10 | 11 | 12 | 13 | 14 |
| 15 | 16 | 17 | 18 | 19 | 20 | 21 |
| 22 | 23 | 24 | 25 | 26 | 27 | 28 |
| 29 | 30 | 31 | --- | --- | --- | --- |

| JANUARY | | | | | | |
|---------|-----|-----|----|----|----|-----|
| S | M | T | W | T | F | S |
| --- | --- | --- | 1 | 2 | 3 | 4 |
| 5 | 6 | 7 | 8 | 9 | 10 | 11 |
| 12 | 13 | 14 | 15 | 16 | 17 | 18 |
| 19 | 20 | 21 | 22 | 23 | 24 | 25 |
| 26 | 27 | 28 | 29 | 30 | 31 | --- |

| FEBRUARY | | | | | | | 1 |
|----------|-----|-----|-----|-----|-----|-----|---|
| S | M | T | W | T | F | S | |
| --- | --- | --- | --- | --- | --- | 1 | |
| 2 | 3 | 4 | 5 | 6 | 7 | 8 | |
| 9 | 10 | 11 | 12 | 13 | 14 | 15 | 9 |
| 16 | 17 | 18 | 19 | 20 | 21 | 22 | |
| 23 | 24 | 25 | 26 | 27 | 28 | --- | |

| MARCH | | | | | | | 3 |
|-------|-----|-----|-----|-----|-----|-----|---|
| S | M | T | W | T | F | S | |
| --- | --- | --- | --- | --- | --- | 1 | |
| 2 | 3 | 4 | 5 | 6 | 7 | 8 | |
| 9 | 10 | 11 | 12 | 13 | 14 | 15 | |
| 16 | 17 | 18 | 19 | 20 | 21 | 22 | 0 |
| 23 | 24 | 25 | 26 | 27 | 28 | 29 | |
| 30 | 31 | --- | --- | --- | --- | --- | |

| APRIL | | | | | | |
|-------|-----|----|----|-----|-----|-----|
| S | M | T | W | T | F | S |
| --- | --- | 1 | 2 | 3 | 4 | 5 |
| 6 | 7 | 8 | 9 | 10 | 11 | 12 |
| 13 | 14 | 15 | 16 | 17 | 18 | 19 |
| 20 | 21 | 22 | 23 | 24 | 25 | 26 |
| 27 | 28 | 29 | 30 | --- | --- | --- |

| MAY | | | | | | |
|-----|-----|-----|-----|----|----|----|
| S | M | T | W | T | F | S |
| --- | --- | --- | --- | 1 | 2 | 3 |
| 4 | 5 | 6 | 7 | 8 | 9 | 10 |
| 11 | 12 | 13 | 14 | 15 | 16 | 17 |
| 18 | 19 | 20 | 21 | 22 | 23 | 24 |
| 25 | 26 | 27 | 28 | 29 | 30 | 31 |

| JUNE | | | | | | | 1 |
|------|-----|-----|-----|-----|-----|-----|---|
| S | M | T | W | T | F | S | |
| --- | --- | --- | --- | --- | --- | --- | |
| 1 | 2 | 3 | 4 | 5 | 6 | 7 | |
| 8 | 9 | 10 | 11 | 12 | 13 | 14 | |
| 15 | 16 | 17 | 18 | 19 | 20 | 21 | 9 |
| 22 | 23 | 24 | 25 | 26 | 27 | 28 | |
| 29 | 30 | --- | --- | --- | --- | --- | |

| JULY | | | | | | | 3 |
|------|-----|----|----|----|-----|-----|---|
| S | M | T | W | T | F | S | |
| --- | --- | 1 | 2 | 3 | 4 | 5 | |
| 6 | 7 | 8 | 9 | 10 | 11 | 12 | |
| 13 | 14 | 15 | 16 | 17 | 18 | 19 | |
| 20 | 21 | 22 | 23 | 24 | 25 | 26 | 0 |
| 27 | 28 | 29 | 30 | 31 | --- | --- | |

| AUGUST | | | | | | |
|--------|-----|-----|-----|-----|-----|-----|
| S | M | T | W | T | F | S |
| --- | --- | --- | --- | --- | 1 | 2 |
| 3 | 4 | 5 | 6 | 7 | 8 | 9 |
| 10 | 11 | 12 | 13 | 14 | 15 | 16 |
| 17 | 18 | 19 | 20 | 21 | 22 | 23 |
| 24 | 25 | 26 | 27 | 28 | 29 | 30 |
| 31 | --- | --- | --- | --- | --- | --- |

| SEPTEMBER | | | | | | |
|-----------|----|----|-----|-----|-----|-----|
| S | M | T | W | T | F | S |
| --- | 1 | 2 | 3 | 4 | 5 | 6 |
| 7 | 8 | 9 | 10 | 11 | 12 | 13 |
| 14 | 15 | 16 | 17 | 18 | 19 | 20 |
| 21 | 22 | 23 | 24 | 25 | 26 | 27 |
| 28 | 29 | 30 | --- | --- | --- | --- |

| OCTOBER | | | | | | |
|---------|-----|-----|----|----|----|-----|
| S | M | T | W | T | F | S |
| --- | --- | --- | 1 | 2 | 3 | 4 |
| 5 | 6 | 7 | 8 | 9 | 10 | 11 |
| 12 | 13 | 14 | 15 | 16 | 17 | 18 |
| 19 | 20 | 21 | 22 | 23 | 24 | 25 |
| 26 | 27 | 28 | 29 | 30 | 31 | --- |

| NOVEMBER | | | | | | |
|----------|-----|-----|-----|-----|-----|-----|
| S | M | T | W | T | F | S |
| --- | --- | --- | --- | --- | --- | 1 |
| 2 | 3 | 4 | 5 | 6 | 7 | 8 |
| 9 | 10 | 11 | 12 | 13 | 14 | 15 |
| 16 | 17 | 18 | 19 | 20 | 21 | 22 |
| 23 | 24 | 25 | 26 | 27 | 28 | 29 |
| 30 | --- | --- | --- | --- | --- | --- |

| DECEMBER | | | | | | |
|----------|----|----|----|-----|-----|-----|
| S | M | T | W | T | F | S |
| --- | 1 | 2 | 3 | 4 | 5 | 6 |
| 7 | 8 | 9 | 10 | 11 | 12 | 13 |
| 14 | 15 | 16 | 17 | 18 | 19 | 20 |
| 21 | 22 | 23 | 24 | 25 | 26 | 27 |
| 28 | 29 | 30 | 31 | --- | --- | --- |

CALENDAR 1929-30

First Semester

September 18, Registration Day.

Service in Chapel, 7:30 p. m.

November 28 to December 1, Thanksgiving Vacation.

December 21 to January 2, Holiday Vacation.

Second Semester

January 27, Registration Day.

April 18-20, Easter Vacation.

May 18, Baccalaureate Sermon, 8:00 p. m.

May 22, Musical Recital, 8:00 p. m.

May 23, Graduation Exercises, 2:30 p. m.

Fellowship Circle Meeting, 7:30 p. m.



ST. MARY'S RIVER, FOSTER PARK

HISTORICAL SKETCH

It was in the late summer of 1904 that excavation was begun on the present site of the Bible Training School. The building was completed in January of 1905 and classes were begun in the same month. The institution is therefore in its twenty-fifth year.

During the quarter of a century of service hundreds of young people have come to her halls and have lighted their torches at her altars to go out to the dark portions of the earth holding forth the Word of Life. The School was born from the vision, sacrifice, and work of its founders; and those very essentials have characterized its life since.

The antecedent of the Fort Wayne Bible Training School was known as Bethany Home, Bluffton, Ohio. Prompted by an implicit faith in God's Word, a few godly people conducted this home for the sick with the aim of directing them to the Great Physician, and as a haven for Christian workers needing rest and recuperation. In a few years the scope of the vision was extended to include teaching of the Bible, and it became known as Bethany Institute.

Later the increased demand for Bible training led to definite steps to enlarge its quarters and extend its service. The institution then passed into the hands of the Missionary Church Association, and this body selected a beautiful site at the edge of Fort Wayne, Indiana, and founded the Bible Training School. However, the character of its work has been interdenominational; several different churches are represented on its board and its teaching staff, and students from eighteen to twenty denominations are in attendance each year.

The present year promises to be an important milestone in the history of the school. To meet growing demands and measure up to increasing opportunities a Twenty-fifth Anniversary Program has been inaugurated. This program includes the erection of a new building, which will provide facilities for an increasing enrollment and also will greatly add to the efficiency of the school.

LOCATION

The location of the School, in the southwest side of Fort Wayne, is ideal, for this is the finest residential district in the city. Here the building stands in a beautiful grove of native trees, removed from the noise and soot of the business section, yet easily accessible by street cars from any part of the city. Just a few blocks west of the campus winds the St. Mary's River along the edge of Foster Park where the students may spend recreation periods.

PURPOSE

The primary purpose of the School is to instruct, train, and send forth Christian workers to proclaim the everlasting gospel of Jesus Christ.

However, many students do not have a definite call to Christian work, yet desire a thorough knowledge of the Word of God. This School aims to so emphasize the great fundamentals of faith and the deeper life through the indwelling of the Holy Spirit that the teaching shall be literally translated into the lives of the students.

True to its name, the institution is pre-eminently a Bible school where the study of the Scriptures is given first place in both courses. Fully one-third of the time devoted to all subjects in the course of study is spent upon the divinely inspired Word of God.

DEVOTIONAL LIFE

This institution has carefully provided for the devotional culture of its students. The constant endeavor is to make the School a home with such a spiritual atmosphere as shall develop the habits of a prayer life, which are so essential to fruitful service.

The day is begun with a short period of private devotion before breakfast. All classes are opened by prayer. The morning chapel service is always a source of spiritual inspiration. The noon prayer meeting is set apart for missionary intercession. Evening worship follows supper and offers opportunity for expressions of prayer and praise in song and testimony. The half day which is set aside each month for prayer has proved to be a fruitful season of waiting upon God. Besides this the men and women have their separate prayer groups, usually preceding the supper hour. This continual spiritual exercise is bound to foster the building of true Christian character.

LIBRARY

The Library is a vital factor in the work of the School. Its practical value is constantly increased by the addition of new magazines and books which are adapted to the courses offered. Our aim is to increase the number of that type of books which have a direct bearing on our work. Several interested patrons have thoughtfully willed their books to the School, thereby aiding us in enlarging our supply. A nominal sum of one dollar per term is paid by each student for the use of the Library.

PRACTICAL CHRISTIAN SERVICE

An invaluable aid in the training of the Christian worker is practical service. This particular factor is just as important to him as the laboratory is to the scientist. Practical Christian service brings the class room in direct contact with the everyday problems relating to the promulgation of the Gospel; accordingly, it furnishes the best possible motive for thorough study.

In harmony with the law in the spiritual realm, that one receives spiritual impulses only as he shares them with others, this practical phase of the training furnishes the student with the proper outlet for the inspiration received through the School. Practical Christian service teaches to do by doing, but apart from the pure experience it affords, it involves a solemn responsibility which is reflected in every department of the institution.

Every student is required to engage in at least six hours of practical work per week, averaging two assignments. These are carefully assigned to him in accordance with his previous training, experience, and individual preferences in view of his future work. The appointment of students to these various services as well as all other matters pertaining to this department is in charge of the Practical Work Committee.

Fort Wayne offers unique advantages for practical Christian service. It is largely an industrial city with a population of approximately 120,000. There are also numerous fields of service among the adjacent rural communities, nearby towns, and lesser cities. The Bible Training School is the only institution of its kind within the city or a wide radius thereof.

Of the various calls for practical Christian work which have come to us, Sunday School teaching stands foremost. We supply teachers for a number of the city churches. Our students have sole charge of three Sunday Schools in the surrounding community. One is held at Sunny Side, a new suburb; another is conducted in the Anthony Wayne school house; and a third convenes regularly at the County Orphanage, where there has been a hearty response to the message of salvation. When the weather is favorable, all enthusiastically participate in the street meetings which have witnessed the blessing of God. On Saturday night some of our men visit the pool halls and soft drink parlors to distribute tracts and speak a word for the Master. Visiting the sick in hospitals and the needy in homes has proved to be a fruitful ministry, and the reports indicate that the visitors as well as the visited are blessed. Thus in missions, chapels, and churches our students find

opportunities for practical service in teaching or preaching the Word and in singing the Gospel.

In connection with the religious work carried on by the local Y. M. C. A., the students have had exceptional and numerous opportunities to sing the Gospel at the shops and factories of the city. Since this work is in charge of the Religious Secretary of the Y. M. C. A., we have no means of tabulating the results, but from the oral reports received we are assured that God's blessing has attended this ministry.

The following reports will give a general idea of the extent of definite work accomplished by students during the school year of 1928-1929. Approximately 5000 tracts were distributed; 900 Sunday School classes were taught; 175 services were conducted; 300 services were addressed; 900 homes were visited; 850 persons were dealt with individually; and 250 accepted Christ as their personal Savior.

Gospel Teams

One noteworthy branch of the Practical Work Department is that of the Gospel Teams. Under the signal favor of God this method of evangelization has afforded students splendid experience and has brought the happiness of the full Gospel to many hearts. The character of its ministry is primarily evangelistic. Students do not go out to advertise the School directly, but to honor Christ in song, testimony, and in the preaching of the Word. A regular team consists of an organized quartette of singers and a speaker.

The teams minister chiefly in the denominational churches outside Fort Wayne within a radius of one hundred and fifty miles. The personnel of the teams is adjusted to the requirements of the entertaining church. Sometimes a church may desire singers only; again, a pastor may desire his pulpit supplied for a Sunday; or a young people's society may wish a team to render a missionary program.

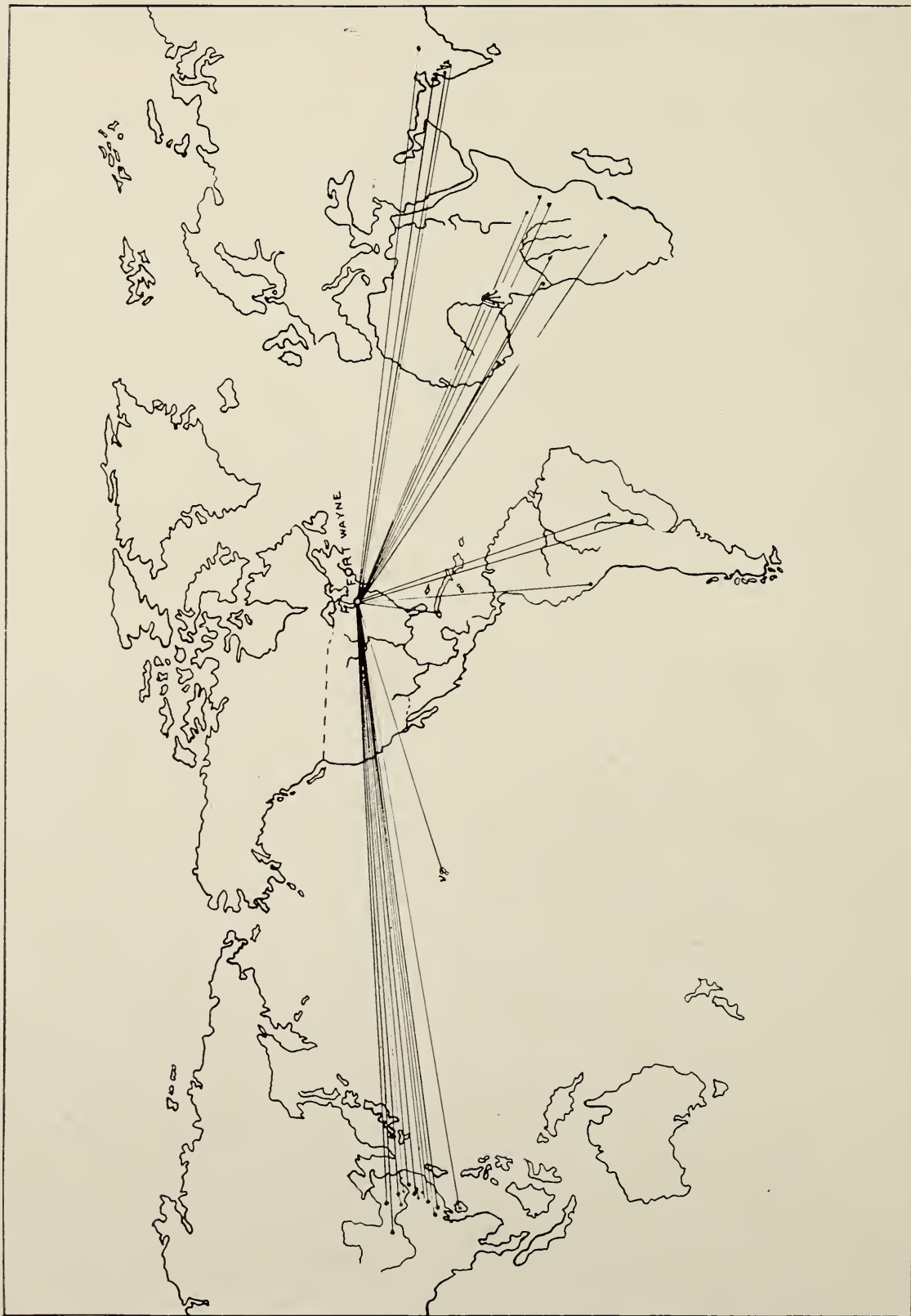
During the year 1928-1929 the gospel teams have assisted in or conducted 163 services within and outside Fort Wayne, among various denominations. Four hundred special songs were sung in these services and scores confessed Christ as their personal Saviour. The gospel bus, a conveyance with a capacity of fourteen, is used occasionally for this work; but most of the trips are made by automobile. The total per student mileage for the past school year was approximately 22,000 miles.

Institutions of learning usually have their fraternal and literary societies. The Bible Training School does not have these. Its chief student organization is a society known as the Students' Mission Band. This is an aggressive society organized to create and stimulate interest in world-wide missions. It includes every student, and is largely responsible for the distinctive missionary atmosphere which pervades the School. Putting ideals into practice, this society has assumed the sole support of Mr. Clayton Steiner, a graduate of the Bible Training School, now serving as missionary in Peru, South America. Each Friday evening the students of the Mission Band conduct a public missionary service, and by divine providence many choice missionaries from India, Afghanistan, Tibet, China, Japan, South America, the Philippine Islands, Armenia, Palestine, Russia, and other countries, have addressed these meetings, firing anew the missionary zeal which burned in the hearts of the students. This society also has charge of noon-day prayer meetings, the weekly schedule of which includes every mission field.

WORLD-WIDE MISSIONS AT THE B. T. S.

One hundred years ago the church was awakening to its long lost responsibility of world evangelization. The missionary movement then begun has reached almost world-wide proportions. The demands of this growing enterprise required centers of training for young men and women, and Bible schools were accordingly established. Simultaneously with the growth of the missionary movement came the breakdown of many seminaries in the essential task of *teaching the Word of God*. But the great heart cry that rose from the pagan world was not for Western civilization, education or philosophy, but the message of Life and Redemption that is found in the Book.

The question may be asked—one that suggests the true measure of a school's worth—"What are its students doing?" The answer to that question will show, as the accompanying map indicates, that the Bible Training School has made a modest but distinct contribution to world-wide missions. Its graduates are busy in the great world of life. Theirs is an altruism that knows no extreme of climate, distinction of race nor national boundary as a barrier to their task. The cold Tibetan highlands, the teeming provinces of China, the hot plains of India, the



WHERE THE NINETY B. T. S. MISSIONARIES ARE STATIONED

sultry tropics of Africa, the lofty Andes of South America, the picturesque islands of Hawaii, our own Indian reservations and Southern mountain districts are among the scenes of their labors of mercy.

In addition to the foreign missionaries indicated above, approximately one hundred fifty of its alumni are engaged in home pastorates, and a considerable number in other forms of Christian service.

COURSES OFFERED.

The School offers four courses of study, the Preparatory Course, the Bible Course, the Bible-Music Course, and the Post-Graduate Course.

1. THE BIBLE COURSE—TWO YEARS

This course is intended for those who desire to prepare themselves to become pastors, evangelists, missionaries, Sunday School or lay workers. Instruction in Personal Evangelism, Bible History and Geography, Homiletics, Church History, Missions, General History, Christian Evidences, and Music is included in this course. Greek, Pastoral Work, Public Speaking, Teacher Training, Biblical Introduction, and Private Music may be elected. A minimum of 14 recitations per week is required; a maximum of 18 is permitted.

2. THE BIBLE-MUSIC COURSE—TWO YEARS

The design of this course is to train men and women for gospel singing, choir directing, piano playing, and hymn writing. Students desiring to graduate from this course are required to take Synthetic Bible, Doctrine, Personal Work, Typology, and to elect six term hours credit from Bible III to VIII. In addition to this they must complete all the class instruction in music and take no fewer than two private lessons each week with three hours consistent practice each day. The private work may consist of two piano lessons, or two vocal lessons, or one of each per week. Students taking this course may elect any other subjects from the Bible course. A minimum of nine class recitations per week is required for graduation, a maximum of fourteen is permitted.

3. THE PREPARATORY COURSE—ONE YEAR

This course has been planned for those who have not sufficient education to enter the regular courses outlined above. The following subjects constitute the regular preparatory course: Synthetic Bible, Grammar, Reading, Orthography, English, and Music. The Dean is authorized, however, to permit such deviations therefrom as individual cases may require.

4. THE POST-GRADUATE COURSE—ONE YEAR

The suggestion of a Post-Graduate Course has been offered repeatedly during the past few years. Many graduates, after extensive experience, have expressed the opinion that the two-year course is barely adequate to meet the increasing demands upon Christian workers. Some have gone elsewhere to pursue their studies for the simple reason that the Bible Training School offered nothing further. It is to meet this demand for those who wish to take further training that this course is included in the curriculum.

Subjects in the Post-Graduate Course are Comparative Religions, Principles and Practices of Missions, Hermeneutics, Scriptural Holiness, Christian Ethics, Christian Philosophy, Bible Exposition, Oral Interpretation, Advanced English, Normal Training in Music, and Languages. Advanced studies in Greek, and courses in Spanish and French are offered. Students may choose advanced work in music—private voice, piano, and evangelistic playing. Credit will be given for electives chosen from the graduate courses.

COURSE FOR SPECIAL STUDENTS

Those who are unable to take the full graduate course, yet desire to avail themselves of the instruction afforded by the School, may elect such subjects as they desire upon the approval of the Dean. A certificate showing work done will be awarded to them on leaving.

ENTRANCE REQUIREMENTS

Every applicant must be a Christian in character. Men must be 18 years of age and women 17. Exceptions to this rule will be made for those who have previously graduated from high school.

Persons wishing to enter upon the two-year Bible Course must have had at least two years of English in high school, or have completed the Preparatory Course of the School, or have satisfactorily passed an entrance examination in English Grammar, English Composition, Orthography, and Reading. Applicants failing in only one of these subjects may enter the Junior year, providing they carry that subject.

The same educational standard prevails for the Bible-Music Course. In addition the applicant must have a sufficient knowledge of Notation to take up the class work in Harmony.

The Post-Graduate Course is offered only to graduates from the School and to any others who have the equivalent prerequisites.

THE BIBLE COURSE
Subjects Required for Graduation
Junior Year

| First Term | | Second Term | |
|--------------------------|------------------|--------------------------|------------------|
| | Periods per Week | | Periods per Week |
| Bible I | 4 | Bible I | 4 |
| Bible II | 2 | Bible II | 2 |
| Bible III-VIII | 3 | Bible III-VIII | 3 |
| History I | 2 | History I | 2 |
| Service I | 1 | Service I | 1 |
| English V | 3 | English V | 3 |
| Music I | 2 | Music I | 2 |
| Music III | 1 | Music III | 1 |

Note: English V is only required for those who have had less than two years of English in high school.

Senior Year

| First Term | | Second Term | |
|-------------------------------|------------------|--------------------------|------------------|
| | Periods per Week | | Periods per Week |
| Bible II | 2 | Bible II | 2 |
| Bible III-VIII | 3 | Bible III-VIII | 3 |
| History II | 2 | Bible IX | 2 |
| Apologetics I or II | 2 | History II | 2 |
| Missions I | 2 | Missions I | 2 |
| Homiletics | 2 | Homiletics | 2 |
| Music III | 1 | History III | 2 |
| | | Music III | 1 |

THE BIBLE-MUSIC COURSE
Subjects Required for Graduation
Junior Year

| First Term | | Second Term | |
|-----------------------------|------------------|-----------------------------|------------------|
| | Periods per Week | | Periods per Week |
| Bible I | 4 | Bible I | 4 |
| Bible II | 2 | Bible II | 2 |
| Bible III-VIII | 1 | Bible III-VIII | 1 |
| Music I | 2 | Music I | 2 |
| Music II | 1 | Music II | 1 |
| Music III | 1 | Music III | 1 |
| Music IV | 1 | Music IV | 1 |
| Music VII or VIII | 2 | Music VII or VIII | 2 |



EAST VIEW OF BIBL



TRAINING SCHOOL

Senior Year

| First Term | | Second Term | |
|-----------------------------|------------------|-----------------------------|------------------|
| | Periods per Week | | Periods per Week |
| Bible II | 2 | Bible II | 2 |
| Bible III-VIII | 2 | Bible III-VIII | 2 |
| Service I | 2 | Bible IX | 2 |
| Music II | 1 | Music II | 1 |
| Music III | 1 | Music III | 1 |
| Music IV | 1 | Music IV | 1 |
| Music V | 2 | Music VI | 2 |
| Music VII or VIII | 2 | Music VII or VIII | 2 |
| Music IX | 1 | Music IX | 1 |

PREPARATORY COURSE

| First Term | | Second Term | |
|-----------------------|------------------|-----------------------|------------------|
| | Periods per Week | | Periods per Week |
| Bible I | 4 | Bible I | 4 |
| English I | 2 | English I | 2 |
| English II | 3 | English II | 3 |
| English III | 3 | English III | 3 |
| English IV | 3 | English IV | 3 |
| Music III | 1 | Music III | 1 |

POST GRADUATE COURSE

| First Term | | Second Term | |
|-------------------------------|------------------|-------------------------------|------------------|
| | Periods per Week | | Periods per Week |
| Bible III-VIII | 1 | Bible III-VIII | 1 |
| (Elect one) | | (Elect one) | |
| Bible X | 1 | Bible X | 1 |
| Bible XI | 1 | Bible XI | 1 |
| Philosophy I | 2 | Philosophy II | 2 |
| Missions II | 2 | Missions III | 2 |
| Oral Interpretation | 1 | Oral Interpretation | 1 |
| English VI | 3 | English VI | 3 |
| *Spanish | 3 | *Spanish | 3 |
| *Greek | 2 | *Greek | 2 |
| *French | 3 | *French | 3 |
| Music III | 1 | Music III | 1 |

*One language is required.

DESCRIPTION OF SUBJECTS

BIBLE

Bible I. Synthetic. In this course each book of the Bible is studied as a separate unit and as a relative part of the whole. In this rapid survey the student obtains a comprehensive view of all the books for the purpose of mastering the great outstanding truths of the inspired Volume. Text, Dr. Gray's "Synthetic Bible Studies," and mimeograph notes. Required in all Courses. Value, 8 term hours.

Bible II. Bible Doctrine. An invaluable course in these days of apostasy to establish the student in "the most holy faith." The cardinal doctrines of the Scriptures are studied in logical order as follows: the Bible, God, Christ, the Holy Spirit, Man, Sin, Salvation, Church, Angels and Satan, and the Last Things. Text, Pardington's "Outline Studies in Christian Doctrine." Required in both graduate Courses. Value, 8 term hours.

Bible III. Gospels and Acts. In the four gospels the person and work of our Lord are studied, and the peculiar characteristics of each book are noted. In this subject the student has unusual advantages to learn from the Teacher of all teachers, by examining the meaning of His messages expressed in parable and prophecy, delivered in private and public. The subject of Acts continues the study of Christ as the ascended Lord operating through the church by the Holy Spirit. Required in Bible Course. Value, 2 term hours.

Bible IV. Church Epistles. A careful analysis and thorough exposition of some of these epistles is given each year. Mimeograph notes. Required in Bible Course. Value, 1 or 2 term hours.

Bible V. Pastoral and General Epistles. Some of these epistles are selected each year and are subjected to a close exegesis. Particular attention is given to the everyday problems of the Christian worker. Required in Bible Course. Value, 1 or 2 term hours.

Bible VI. The Apocalypse. This course consists of a simple exposition of the Book of Revelation, following the outline indicated in chapter I, verse 19. While the prophetic element is kept prominent, the devotional and practical value of the book is also emphasized. Mimeograph notes. Required in Bible Course. Value, 2 term hours.

Bible VII. Poetical Books. The choicest portions from these books are selected and studied in detail to show their historical setting, explain their prophetic references, and apply their spiritual truths. Required in Bible Course. Value, 1 or 2 term hours.

Bible VIII. O. T. History and Prophecy. A course making a detailed examination of the more important historical and prophetic books. In the former, emphasis is laid upon those events which mark the gradual unfolding of God's plan of redemption; in the latter, special attention is given to the predictive element relating to Christ's first and second advent, Israel's future, the tribulation and the millennium. Mimeograph notes. Required in the Bible Course. Value, 1 or 2 term hours.

Bible IX. Typology. A study of the types in the Pentateuch. This part of the inspired Word, which is most frequently attacked by its modern enemies, becomes a fruitful field of research foreshadowing the wonderful plan of redemption. Required in both graduate courses. Value, 2 term hours.

Bible X. Scriptural Holiness. This course is designed to set forth the doctrine of holiness or sanctification as revealed in God's Word. Post Graduate Course. Value, 2 term hours.

Bible XI. Hermeneutics. The general plan of this course is adapted to meet what appears to be the practical wants of students of Theology. Its purpose is to familiarize the student with the methods and principles involved in the correct interpretation of the Scriptures. Post Graduate Course. Value, 2 term hours.

HISTORY

History I. Bible History and Geography. Since Bible History is all but inseparable from Bible geography, the two subjects are treated together. In the first term the student traces the history and progress of divine revelation from the Creation to Christ. In the second term he studies Gospel and Apostolic history with the necessary geographical background. Required in Bible Course. Value, 4 term hours.

History II. General History. A study of history reveals to us the dealings of God with man and enables us by a knowledge of the past, to understand better our duty to the present. The study of General History furnishes a foundation for other courses in history and allied subjects. This correlation and God's Providence in the world are kept in view. Text, Meyer's General History. Required in Bible Course unless equivalent credits can be presented. Value, 4 term hours.

History III Church History. A course in the history of the church from the days of the apostles to the present time. A complete outline of church history is given, emphasizing the important matters, and

showing how God in the midst of the darkest periods of the church has had a company of His own people who were true to Him to keep alive the true faith. Required in Bible Course. Value, 2 term hours.

MISSIONS

Missions I. History of Missions. A survey of the progress of missionary extension from its inception to the beginning of the modern era is first made. The greater part of the course deals with the modern era; a study of the individual fields, the general facts, the work accomplished, the outstanding problems, and immediate needs of each. It is a comprehensive study of Missions, but not so technical as to neutralize the inspiration to be derived from this important subject. Text, "The Progress of World-Wide Missions," Glover. Required in Bible Course. Value, 4 term hours.

Missions II. Missionary Principles and Practices. An invaluable course for all prospective missionaries. Required by some mission boards of candidates. It treats of such themes as missionary administration and support, the qualifications of missionaries, and other problems of practical value. A special study is made of the principles of self-government, self-support, and self-propagation of the native church. Post Graduate Course. Value, 2 term hours.

Missions III. Comparative Religions. This study consists of an interpretation of the great religions of the world, as well as a presentation of such facts concerning their origin and history as one needs to rightly interpret them. This is all to the one end that the superlative elements of the only true religion of Christ may be set forth and emphasized. Post Graduate Course. Value, 2 term hours.

PHILOSOPHY

Philosophy I. Christian Philosophy. A course intended to fortify the student against destructive philosophical skepticism and superstitious credulity. By a series of demonstrations, Christianity is shown to be the true religion and the only religion possible to meet the spiritual wants of mankind. Post Graduate Course. Value, 2 term hours.

Philosophy II. Christian Ethics. A course that treats of the principles that govern moral conduct. The application of the Christian ideal to problems arising from duty to society and government is discussed. Among the subjects considered are industrial wrongs, the doctrine of non-resistance, ministerial courtesy, etc. Text-book. Post Graduate Course. Value, 2 term hours.

APOLOGETICS

Apologetics I. Christian Evidences. The purpose of this course is to set the proofs of Christianity before the student that he may be grounded in the fundamental truths of the Word, and be enabled to meet the assaults of the modernist. Text, "Why is Christianity True?" Mullins. Elective. Value, 2 term hours.

Apologetics II. Biblical Introduction. A brief course showing how we got our Bible: how it has been preserved; and the proofs as to why we accept it as the Word of God. The revived assaults against the Bible, and particularly against the Old Testament, make the subject especially important. The Mosaic authorship of the Pentateuch, the unity of the Book of Isaiah, the authenticity of Daniel are among the conservative positions defended. Text and collateral reading. Elective. Value, 2 term hours.

Note: Students in the Bible Course are required to have two credits in Apologetics.

LANGUAGES

Greek I. Since Greek was the language chosen by our Lord as the suitable channel to give His highest revelation to mankind, its study is a valuable asset to any student of the Word. The first year is spent largely on grammar and vocabulary as found in Huddilston's Essentials. Elective. Value, 4 term hours.

Greek II. The second year is devoted to the study of syntax and selected readings from various New Testament books. The necessary books are Huddilston's Essentials, a New Testament Greek text, and a good Greek Lexicon of the N. T., preferably Thayer's. Elective. Value, 4 term hours.

Greek III. Those who have completed Greek I and II or its equivalent are eligible to this course, which consists of Exegesis of many portions of the New Testament, and examination of some portions of the Septuagint translation of the Old Testament. This course is made especially helpful for ministers and prospective Bible teachers. Necessary text books are a N. T. Greek Text, N. T. Greek Lexicon and Greek Grammar. Post Graduate Course. Value, 4 term hours.

Spanish I. A course in elementary Spanish, including Spanish grammar, reading, and composition. Elective. Value, 6 term hours.

French I. Elementary French includes French grammar, composition, reading, and translation. First year French, from the beginning lessons, develops classroom and practical conversational use of the language. Elective. Value, 6 term hours.

ENGLISH

English I. A course in the fundamental principles of reading, including articulation, inflection, emphasis, and expression, which is supplemented by a careful study of some standard literature. Special attention is given to the public reading of Scripture. Required in Preparatory Course. Value, 4 term hours.

English II. Orthography. Emphasis is placed on correct usage of words. In the latter part of the course theological terms are studied. Text, "Knowing and Using Words"—Lewis and Holmes. Required in Preparatory Course. Value, 6 term hours.

English III. A thorough course in English Grammar. The aim of the study is threefold: to prepare the student for advanced English, to form the habits of correct speech, and to gain an insight into the principles of the English language. Since a mastery of English is invaluable in acquiring a foreign language, a number of students have elected English III to this end. Text, Burleson's English Grammar. Required in Preparatory Course. Value, 6 term hours.

English IV. A course in elementary English which aims to inculcate habits of speaking and writing effectively. Better English for immediate use is the goal. Required in Preparatory Course. Value, 6 term hours.

English V. An advanced course giving thorough instruction in the principles and practice of rhetoric and composition. An effort is made to improve the quality of English from a utilitarian standpoint. Text, "Composition and Rhetoric." Tanner. Required in Junior year for students who have completed the Preparatory Course. Value, 6 term hours.

English VI. This course is equivalent to the first year of college English. The object is to familiarize the student with the forms and principles of correct writing. A weekly theme is required of all students. This is a Post Graduate course. Value, 6 term hours.

HOMILETICS AND PUBLIC SPEAKING

Homiletics. This course deals with the preparation and delivery of sermons. It aims to acquaint the student with the best principles by which this two-fold object may be accomplished. The importance of relying upon the definite guidance and illumination of the Holy Spirit in the ministry of God's Word is ever emphasized. Text, "The Preparation and Delivery of Sermons." Broadus. Required of men in Bible Course. Value, 4 term hours.

Public Speaking. This course is largely a study of the fundamental qualities of delivery, although attention is given to the method of preparation of addresses in general. Elective. Value, 2 term hours.

Oral Interpretation. The purpose of this course is to increase the student's ability in the interpretation of the Scriptures as well as other masterpieces of literature. It aims to develop naturalness of manner and freedom in self-expression through attention to intonation and inflexion, articulation and emphasis, posture and gesture. A certain amount of memory work is required, but not enough to be burdensome. Post Graduate Course. Value, 2 term hours.

SERVICE

Service I. Personal Work. A course designed to aid the Christian in the art of soul winning. The student is taught how to deal with different classes of men and women. Value, 2 term hours. Required in both graduate courses.

Service II. Pastoral Work. This study deals with the ministry of the Christian worker outside the pulpit, including the oversight of all the divinely instituted offices of the church and the best methods of conducting the different services. Value, 2 term hours. Elective.

Service III. Sunday School Teacher Training. The essential elements of this course are a study of the working of the pupil's mind in its progressive stages, and of the important principles and best methods which are applicable to the different departments of the Sunday School. Value, 2 term hours. Elective.

Service IV. Evangelism. This course is built up around the idea of practical rather than professional evangelism. The elements essential to revivals, the relation between pastor and evangelist, the evangelist himself, and the conducting of meetings are among the subjects treated. Elective. Value, 2 term hours.

MUSIC

Music I. Notation. The rudiments of music. In the first term the structure of major keys and the various symbols are studied; in the second term the chromatic tones, accidentals, intervals, and minor keys are taken up. Text, Towner's Class and Chorus. Required in both graduate courses. Value, 4 term hours.

Music II. Sight Reading. Designed to enable the student to read music at sight. Required in Bible-Music course. Value, 2 term hours.

Music III. General Chorus. This course trains in chorus singing, art of expression and interpretation. Required in all courses in every year. Value, 2 term hours.

Music IV. Conducting. Careful training in precentorship. Required in Bible-Music course. Value, 2 term hours.

Music V. Harmony. A study of the formation of chords with their progressions and resolutions, preparing the student for the advanced course in composition. Required in Bible-Music course. Value, 2 term hours.

Music VI. Composition of songs and their adaptation to selected words. Required in Bible-Music course. Value, 2 term hours.

Music VII. Private voice culture includes voice building, care and use of voice, proper tone production and placement, breathing, phrasing, and interpretation.

Music VIII. In private piano instruction emphasis is laid on a thorough technical foundation. All students are carefully prepared in scales (thirds, sixths, eighths, tenths: in staccato, contrary motion, and canon), arpeggios in all forms and touches, and octaves. This background combined with the classics and additional exercise material develops hymn playing, eliminating the difficulties of playing hymns in any key. Hymns are studied from the standpoint of pedaling, time, rapid reading, and transposition. Tone quality and expression are stressed in all piano work.

Music IX. Normal Training. A course designed to train the student to teach the theory of music. Required in Bible-Music course. Value, 2 term hours.

Note: Arrangements have been made with an artist teacher to give violin instruction to regularly enrolled students at the rate of \$1.00 per lesson.

REGULATIONS

Enrollment Irregularities. A fee of \$2.00 will be charged all who present themselves for enrollment on other days than those set apart for that purpose. After the days of registration a fee of \$.50 will be charged for any change in enrollment, except where such change is made necessary by action of the school.

Changing Courses. A change in subjects may be made by the Dean during the first three weeks of any term, but after that, only by action of the Faculty. A subject discontinued after the third week of a term shall be counted as a failure. The Faculty reserves the right to withdraw any elective course for any term if it is elected by fewer than five students.

Class Absence. Each absence from classes immediately preceding or following a holiday or recess will count double. A student who absents himself from a class for more than one-eighth of its recitations shall be subject to penalty or special examination for which a charge of \$1.00 will be made. Three tardies will be counted as an absence.

Reservations. In order to secure the assignment of a room, each applicant after receiving a letter of acceptance, should make a deposit of \$2.00. No room will be reserved until this deposit has been received, and while it will not be refunded in any case, yet it will be credited on the cost of room and board after the student arrives.

Conduct. In an institution of this kind the regulation of conduct becomes necessary for the welfare of the group and the proper safeguard of the student. For this purpose a set of rules and regulations has been formulated to which the student is expected to conform. The desire of the School is to provide an atmosphere most conducive to reverent study and development of strong Christian character. The regulation of behavior is directed toward this end.

It is conceded to be the duty of Christian women to exercise their influence in forming a high standard of morals and manners. One important factor in this matter is that of dress. Since the modern trend of women's dress is singularly suggestive, we urge that moderation be exercised and everything extreme avoided. It is our belief that vulgar clothes, which include those which are too elaborate for the occasion as well as those which are sleeveless or extremely short, are not in keeping with the Christian standard of living and therefore are not acceptable for our students.

Care of Rooms. Each student is responsible for the cleanliness and tidiness of his room. In addition to regularly cleaning his room he is expected to give it a thorough cleaning in the spring at such a time as will be designated by the Matron.

Health. It is recognized that the most efficient student is the one who is healthy. Recreation periods, distinct from study periods, are provided; and every student is required to spend at least one period in the open air each day. The School is situated on a beautiful shady campus equipped with some athletic apparatus, such as basketball and tennis courts.

All cases of illness are to be reported promptly to the Matron or the Dean. The School provides care for those who may have minor sicknesses.

EXPENSES

| | | |
|--|---------------------------|--------|
| Board and Room | \$ 6.00 per week | |
| Tuition for boarding students (except in Bible-Music Course) | 15.00 per term | |
| Tuition for boarding students in Bible-Music Course | 35.00 per term | \$5.00 |
| Tuition for day students | 25.50 per term | |
| Tuition for day students in Bible-Music Course | 45.50 per term | \$2.50 |
| Registration fee | 1.00 per term | |
| Library fee | 1.00 per term | |

The rate of \$6.00 for board and room per week includes a limited amount of laundry, but the student is expected to assist in the housework of the School about one hour each day.

Each term has seventeen weeks. Tuition must be paid at the opening of each term. Board and room should be paid monthly in advance. Any deviation from the regular time of making payments must meet with the approval of the Finance Committee.

Students remaining for Christmas vacation will be charged at the regular rate of \$6.00 per week. Those absent will be required to pay room rent at the rate of \$1.50 per week. No deductions of board expenses will be made on absences of less than a week, and no deduction will be made on any tuition fee for which credit is given. No deductions will be made for absences of day students. A moderate charge will be made for diplomas.

Private music lessons are given to other than Bible-Music students at the following rates: One term of 15 lessons, \$15.25; one term of 15 lessons, including the use of piano for one-half hour's practice each day, \$12.45; one term of 15 lessons, including the use of piano for one hour's practice each day, \$19.50.

To accommodate local students desiring to take one or more subjects a flat rate is made as follows: \$5.00 for a one term hour subject; \$8.00 for a two term hour subject; and \$10.00 for a three term hour course. Tuition charges are made only when a person has enrolled as a student. Anyone is welcome merely to attend lectures.

The School is seeking to assist students who find it necessary to do work to help meet their expenses while in training, by holding as many classes in the forenoon as possible, thus permitting students to work in the city during the afternoon. Many have earned a considerable share of their expenses in this way; a few have earned practically all. However, those who must devote considerable time to secular work are encouraged to spread their course over a longer period of time. It is desirable that new students arrange to meet their financial needs for the first term without employment, if possible, in order to allow time to become fully adjusted to study and school life.

There is an opportunity for a limited number of students to pay for part of their expenses by assisting in the housework of the School. Those who desire such assistance should communicate with the Dean as early as possible.

EQUIPMENT

The rooms are furnished with bedsteads, tables, chairs, and dressers; but students furnish rugs, window curtains, dresser and table scarfs, pictures, or any other articles they may desire to make the room homelike.

Each student is expected to bring a pair of blankets, comforter, bedspread, pillow, change of sheets, pillow slips, towels, and three napkins, all plainly marked with the owner's name in indelible ink. Payson's ink is recommended. The School cares for the laundry of sheets, pillow slips, towels, and a limited amount of personal clothing.

Textbooks and supplies are carried in the bookroom, and are sold at economical rates. Bibles are handled at greatly reduced prices.

GENERAL INFORMATION

Fort Wayne is easily accessible from most points. The Pennsylvania, Nickel Plate, New York Central, and Wabash lines enter Fort Wayne. To reach the Bible School from any of the numerous steam and electric lines, take a South Wayne electric car to Rudisill Boulevard.

Information of any kind is cheerfully given on request. Catalogues are mailed free to any one who may desire them. Applications for admission will receive prayerful attention. Use regular application blanks whenever convenient. If you do not have one, write for it and it will be sent at once. Satisfactory arrangements should always be made with the Dean before coming to the School as a student. All applicants are advised to enter the School at the opening of the first or second term because it is very difficult to grasp a subject after the class has advanced.

Visitors are welcome to the School at any time.

Address all inquiries concerning the courses of study, catalogues, application blanks, etc., to Dean, Bible Training School, Fort Wayne, Indiana.

THE NEW BUILDING

The need for additional room has become urgent in the past several years as the School has continued to grow. During 1928-29 the Shady Court Apartments were leased and improvised into a men's dormitory; yet with these additional facilities there was an insufficient number of class rooms, and practice rooms for music students.

It is planned to erect a building to meet these needs as soon as the required funds are forthcoming, possibly in time for use during the school year of 1929-30. The estimated cost is \$48,000, of which approximately half has already been subscribed. In keeping with its mission and character it is not the policy of the School to assume heavy indebtedness. It operates on principles of economy and sacrifice, proved by its present status of being wholly free from debt. Accordingly it is planned to begin building only when seventy-five per cent of the cost shall have been paid or subscribed.



The new building will front on one of Fort Wayne's most beautiful and important thoroughfares, Rudisill Boulevard. It is designed to relieve the congestion in the main building; furnish a separate dormitory for either men or women; and provide class and practice rooms. A Building Committee has been appointed to receive funds and further the project. It is their conviction that the Bible Training School offers a safe, sound, and productive investment. The Committee invites interested Christian people to inspect the institution first-hand, or it will gladly furnish further information through correspondence. Monies for the Building Fund are payable to Mr. Reuben Roth, First National Bank, Fort Wayne, Indiana; or to the Treasurer of the Bible Training School.



B. T. S. School Song.

Dedicated to B. T. S. Fellowship Circle.

E. M. R.

COPYRIGHT, 1928, BY ELTON M. ROTH.

Elton M. Roth.



1. God bless the good old B. T. S., Which we have learned to love;
2. We love the good old B. T. S., With fel - low-ship so sweet;
3. Live on, thou good old B. T. S., Through-out this vast do - main;



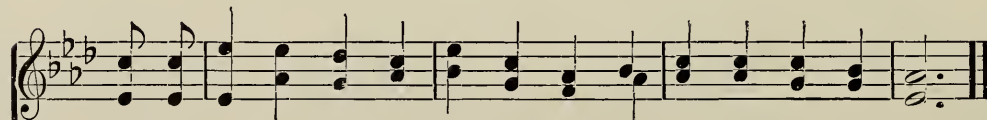
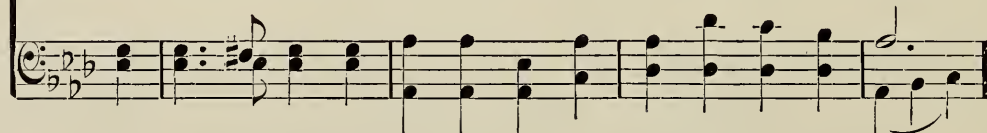
It stands for truth and pow'r and grace Of God in heav'n a - bove.
We kneel for her in hum - ble prayer At God's dear mer - cy - seat.
And may thy halls all na - tions bless Till Christ re - turns to reign.



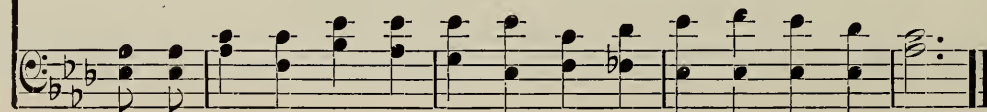
CHORUS



God bless the good old B. T. S., In faith and hope and love;



May it stand se - cure and long en - dure, The good old B. T. S.



16. Is your health good?..... If not, what is the nature of
your ailment?

17. When do you expect to enter the school?

18. Are you willing to submit to the rules and regulations of this
school?

19. Give the names, addresses, and positions of at least two re-
liable persons to whom reference may be made.

Name..... Name.....

Address..... Address.....

Position..... Position.....

20. Remarks.....

APPLICATION BLANK

Fort Wayne Bible Training School

Date.....19.....

1. Name
2. Street Address
- City..... State.....
3. Age.....
4. Race..... Nationality.....
5. Are you single or married?.....
6. If married, have you any children?.....
- State number and age.....
7. How much education have you had?.....
8. Are you a Christian?..... On what ground do you
base your claim?.....
.....
9. How long have you been saved?.....
10. If you are a member of any church, state denomination.
.....
11. Why do you desire to attend the Bible Training School?
.....
12. If you have been engaged in any Christian work, state what,
where, and how long.....
13. Are you looking forward to any special work or particular
field?..... If so, what?.....
14. What is your present occupation?.....
15. Are you able to meet expenses while in school?.....

(OVER)

16. Is your health good?..... If not, what is the nature of
your ailment?
17. When do you expect to enter the school?.....
18. Are you willing to submit to the rules and regulations of this
school?
19. Give the names, addresses, and positions of at least two re-
liable persons to whom reference may be made.
- | | |
|---------------|---------------|
| Name..... | Name..... |
| Address..... | Address..... |
| Position..... | Position..... |
20. Remarks.....
-
-
-
-

You will be notified as soon as your application has been duly
considered.

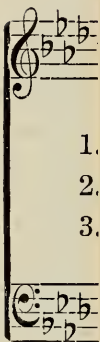
Address applications to Dean, Bible Training School, Fort
Wayne, Indiana.

B. T. S. School Song.

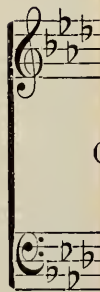
You will be notified as soon as your application has been duly considered.
Address applications to Dean, Bible Training School, Fort Wayne, Indiana.

E. M.

1.
2.
3.



THE W-W PRINTING CO.



May it stand se - cure and long en - dure, The good old B. T. S.



