

Taylor University

Pillars at Taylor University

Academic Catalogs (TUFW & Predecessors)

Publications for TUFW and Predecessors

1-1-1939

Fort Wayne Bible Institute Catalog

Fort Wayne Bible Institute

Follow this and additional works at: <https://pillars.taylor.edu/tufw-catalogs>



Part of the [Higher Education Commons](#)

Recommended Citation

Fort Wayne Bible Institute, "Fort Wayne Bible Institute Catalog" (1939). *Academic Catalogs (TUFW & Predecessors)*. 45.

<https://pillars.taylor.edu/tufw-catalogs/45>

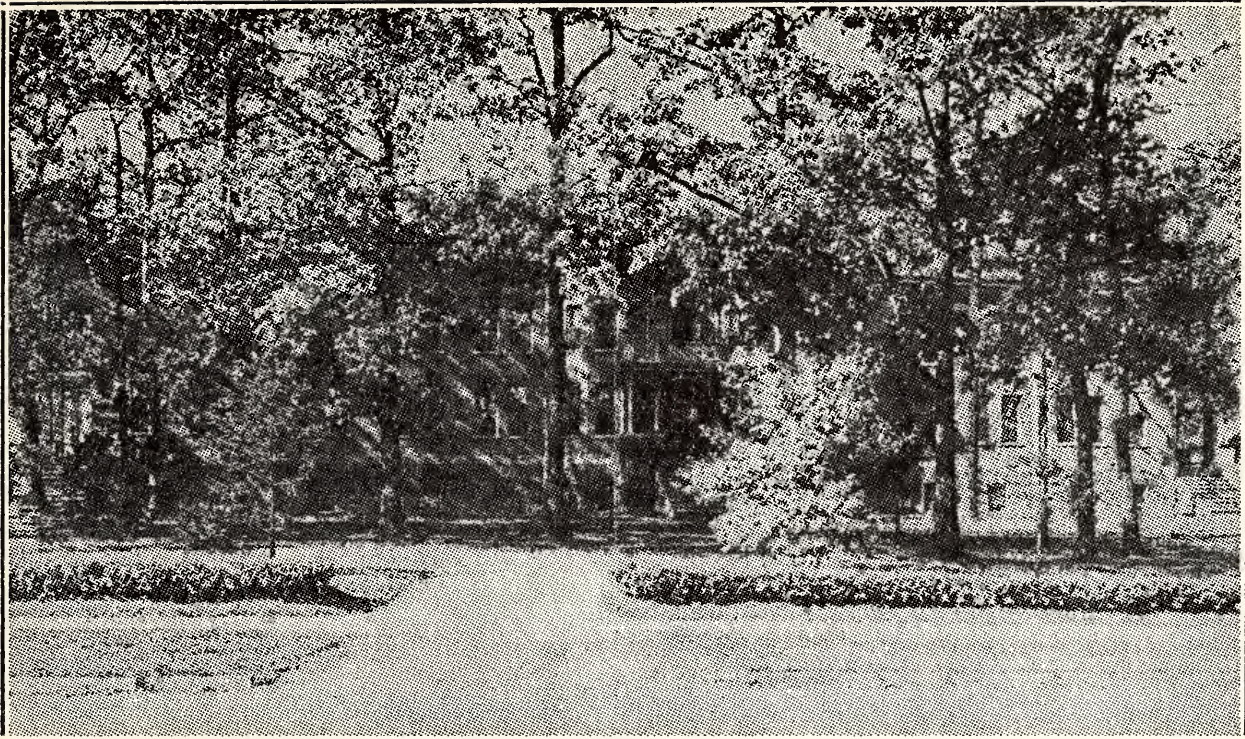
This Book is brought to you for free and open access by the Publications for TUFW and Predecessors at Pillars at Taylor University. It has been accepted for inclusion in Academic Catalogs (TUFW & Predecessors) by an authorized administrator of Pillars at Taylor University. For more information, please contact pillars@taylor.edu.

The Fort Wayne Bible Institute

FORT WAYNE, INDIANA



CATALOG 1939 - 40



Training for Service

and

Service in Training

Governing Board

| | | |
|---------------------------------------|---------|---------------------|
| Rev. J. A. Ringenberg, Chairman, 1940 | - | Archbold, Ohio |
| Rev. W. H. Lugibihl, Secretary, 1941 | - | Peoria, Illinois |
| Rev. J. E. Ramseyer, President, 1942 | - | Fort Wayne, Indiana |
| Rev. C. J. Gerig, 1940 | - - - - | Berne, Indiana |
| Rev. M. N. Amstutz, 1939 | - - | Royal Oak, Michigan |
| Rev. J. S. Wood, 1939 | - - - | Detroit, Michigan |
| Mr. S. A. Lehman, 1939 | - - | Fort Wayne, Indiana |
| Rev. Quinten Everest, 1940 | - - | Goshen, Indiana |
| Rev. Armin Steiner, 1940 | - - - | Pandora, Ohio |
| Rev. Jared Gerig, 1941 | - - - | Cleveland, Ohio |
| Mr. J. Francis Chase, 1941 | - - - | Chicago, Illinois |
| Mr. Shirl Hatfield, 1939 | - - - | Pandora, Ohio |
| Rev. C. E. Rediger, 1941 | - - - | Chicago, Illinois |

Administration

| | | |
|---------------------|-----------|--------------------|
| Rev. J. E. Ramseyer | - - - - | President |
| Rev. S. A. Witmer | - - - | Dean and Registrar |
| Rev. P. L. Eicher | - - - - | Business Manager |
| Mr. S. A. Lehman | - - - - - | Treasurer |
| Miss Martha Amstutz | - - - | Dean of Women |

Faculty

JOSEPH EICHER RAMSEYER, President
Lectures on Deeper Christian Life

SAFARA AUSTIN WITMER, A.B., M.A., Dean
Bible and Missions

BENJAMIN FRANKLIN LEIGHTNER
Bible, Biblical and Pastoral Theology, Homiletics

LOYAL ROBERT RINGENBERG, A.B., M.A.
Old Testament, Church History
Bible

PAUL UPDIKE, A.B.
Christian Education

EARL BAYLISS FLETCHER
Bible

LILLIAN MAE ZELLER
English, Expression

EFFIE IRENE SMITH, A.B.
Language, History

MARTHA AMSTUTZ
Deaconess Course

CHRISTIAN ADOLPH GERBER
Theory of Music, Voice

RAYMOND MAX WEAVER
Piano, Organ, Harmony

IRA GERIG
Piano, Voice

Schedule

First Semester

September 12, Registration - - All New Students

September 13, Registration - - Middles and Seniors

Registration Begins at 8:00 A. M.

September 13, 7:30 P. M. - - - Opening Service

September 14, 8:00 A. M. - - Class Sessions Begin

December 19, 12:00 Noon - Christmas Vacation Begins

January 2, 9:50 A. M. - - - Classes Resumed

January 24 - - - - End of First Semester

Second Semester

January 25 - - - - - Registration Day

Registration Begins at 8:00 A. M.

January 26, 8:00 A. M. - - Class Sessions Begin

March 20, Noon - - - Spring Recess Begins

March 26, 8:00 A. M. - - - Classes Resumed

May 26 - - - - - Baccalaureate Service

*May 29, 10:30 A. M. - - - Graduation Exercises

*Central Daylight Saving Time

Our Creed

The Fort Wayne Bible Institute is definitely committed to the conservative and evangelical interpretation of the Christian faith:

The divine inspiration and consequent authority of the whole canonical Scriptures.

The Trinity of the Godhead—Father, Son, and Holy Spirit.

The fall of man, his consequent moral depravity and the need of regeneration.

The incarnation of Jesus Christ to reveal the Father and to make atonement for the sins of the whole world through His substitutionary death.

Personal salvation by repentance toward God and faith in Jesus Christ.

The baptism with the Holy Spirit as a definite, crisis experience subsequent to conversion for purity in life and power in service.

The personal, premillennial return of Jesus Christ our Lord.

The resurrection of the body, both of the just and the unjust.

The eternal life of the saved and the eternal punishment of the lost.

While the Bible Institute stands firmly for these truths, it considers the spirit of equal importance to the letter. It lays as much stress on the Christian character of the messenger as upon the orthodox correctness of his message. These fundamentals are held to be essential:

Wholehearted love toward God and man.

Christian fellowship among believers.

Scriptural separation from the world.

Victory through the indwelling Christ.

Unswerving loyalty to Christ as Lord.

Consecration for rugged, sacrificial service.

The leadership of the Holy Spirit for the believer and the church.

A living, working faith in the promises of God for spiritual, physical, and temporal needs.

Zealous witnessing for Christ.

Historical Sketch

In the late summer of 1904 excavation was begun on the present site of the Fort Wayne Bible Institute. The building was completed in February, 1905, and the first term was held in the first part of the same year. The Institute is, therefore, in its thirty-fifth year.

For more than a third of a century hundreds of young people have come to her halls and have lighted their torches at her altars to go out to the dark portions of the earth holding forth the Word of Life. Born from the vision, sacrifice, and labors of its founders, the life of the Institute has been continuously characterized by these essentials.

The antecedent of the Fort Wayne Bible Institute was known as Bethany Home, in Bluffton, Ohio. Prompted by an implicit faith in God's Word, Mr. and Mrs. B. P. Lugibihl conducted this home as a retreat for the sick who were seeking the Great Physician, and as a haven for Christian workers needing rest and recuperation. In a few years the scope of the vision was enlarged to include teaching of the Bible. Then it became known as Bethany Bible Institute with courses in Bible, English, and Music.

Later the increased demand for Bible training led to definite steps to enlarge its quarters and extend its service. The institution then passed into the hands of the Missionary Church Association. This body selected a beautiful site at the edge of Fort Wayne, Indiana, and founded the Bible Training School. The school operated under this name until the year 1930, when the name was changed to The Fort Wayne Bible Institute. This change of name, however, does not indicate any change in the character of the institution, which always has been interdenominational. Several different denominations are represented on its board and its teaching staff, and students from eighteen to twenty denominations are in attendance each year.

In 1938 the Institute was incorporated separately, giving it a solid legal foundation. It is chartered as a theological institute with the privilege of offering academic and college courses and granting suitable awards for such work. The Institute is governed by a board composed of twelve Trustees and the President.

Location

Not far from the center of population of the United States is the city of Fort Wayne with its beautiful homes and its internationally known industrial enterprises. In the southwest part of this city lies the three-and-one-half acre campus of the Institute with its virgin forest. Nestling among and shaded by these stalwart trees are the Institute buildings. Removed from the noise and soot of the industrial section, and located in one of the finest residential districts of the city, the campus and buildings furnish an ideal environment in which the student may study and live.

The city of Fort Wayne is located within a radius of three hundred and fifty miles from Chicago, Detroit, Cleveland, Cincinnati, St. Louis,

Indianapolis, Milwaukee, Toledo, and Pittsburg, and is at the very hub of the industrial Middle West. The several trunk lines which pass through and the bus and interurban lines which radiate from it, make Fort Wayne easily accessible from all directions.

Purpose

We are "Saved To Serve," and a call to service is always a call to preparation. This preparation must be adequate and thorough to meet the needs of present-day conditions and problems. Moreover, the Bible Institute of today is called upon to be a substitute for many of the theological seminaries, which have gone liberalistic. Hence our aim is to furnish adequate scholarly and spiritual equipment for the minister of the Gospel and for the advanced lay worker. Such workers must be well furnished, not only in spirituality but also in the art of studying, thinking, preaching, and teaching. They must learn how to study by studying under wise and firm direction. No teacher, not even the great teacher, the Holy Spirit (John 14:26), takes upon himself the impossible task of "learning" anyone anything. A "student" is one who studies. The teacher teaches; the student learns by studying.

Many Christian young people who have not received a definite call to Christian service desire to become students and to secure a comprehensive knowledge of the Word of God and related subjects. Such young men and women, also, will find at the Institute a hearty welcome to pursue courses adapted to their needs.

In other words, the objective of the Institute is to instruct men and women in that vital foundation of our spiritual inheritance, the Word of God, and in those studies which are grammatically and historically related to the Word of God, and to train them for the important service which has been committed to the Church of the Lord Jesus Christ. The field is the world. This includes the pulpit, the classroom, the highways and byways, the slums, and the regions overseas. The mission of the Church is evangelization and edification; the equipment is knowledge and power. Hence we emphasize pre-eminently the great fundamentals of the faith and the deeper Christian life through the indwelling Holy Spirit, the Source of power, so that the very life of Jesus may be translated into and lived out in the life of the student. The study of the Scriptures is given first place in all courses. Approximately one-half of the time devoted to all subjects in the various courses is given directly to the study of the divinely inspired Word of God.

World-Wide Missions

From the time that the vision of the Bible Institute was born of the Spirit in the hearts of its founders, the school has consistently encouraged missions. It has attempted to widen the horizon of its students to the whole world of human need. The scores who have gone from its halls to the more distant regions of the earth are its testimony that this early vision has been realized.

In the present period of crisis the challenge of world need is faced with new and serious obstacles. Never before has the population of the world been so great. It is almost three times as great as it was in William Carey's day when he began the Era of Modern Missions. In the face of unprecedented need is the tragic loss of interest by a lukewarm church that is out of touch with the mind and heart of the Master. Added to this drag is the deadly virus of "modernism" which is destroying the dynamic of missions and perverting its Scriptural basis. Economic crises at home, warfare, oppression, and political disturbances abroad, have also profoundly affected the missionary enterprise. In some fields missionary forces have been reduced and the expansion of the Gospel checked.

The Bible Institute meets this challenge by a definite reaffirmation of faith and loyalty to the Great Commission. It believes that this is a sifting hour, but that the true church will go on in the divine program until the return of Jesus Christ. It holds that God's first method in world-evangelism is the sending out of able workmen, prepared and prayed out to sacrificial service. It believes that no obstacles are insuperable to those who are divinely called and chosen. In a word, the Institute **continues to believe in missions**, and it means to serve as a training center for recruits who will go and tell the message of Life and Redemption in Christ. Few, if any, of its more than one hundred foreign missionaries working with various societies have had to return to the homeland on account of economic crises. Instead, the roll of honor has been increased by several who have lately entered upon their first term of service.

Devotional Life

The Institute has provided carefully for the devotional culture of its students. The constant endeavor is to make school a home with such a spiritual atmosphere as shall develop the habits of prayer life, which are so essential to fruitful service.

The day is begun with "quiet hour," a period of private devotion before breakfast. All classes are opened by prayer. The mid-morning chapel service provides an interim for spiritual inspiration. At five o'clock the men and women meet in their respective groups for a half hour of missionary intercession. In accordance with their weekly schedule the globe is encircled by prayer. Following supper, evening worship affords opportunity for expressions of prayer and praise in song and testimony. The half day which is set aside each month for prayer has proved invaluable in heart searching, cleansing, and filling. This continual spiritual exercise is bound to foster the building of true Christian character.

The Library

The library is an important factor in the life and work of the Institute. All students find occasion to use it for study and research. At present there are approximately 3500 volumes on the shelves besides other reference materials. The theological and missionary departments have been greatly enriched by the addition of carefully selected books. Contributions of books related to our courses will be gratefully received.

Eight

Practical Christian Service

Actual Christian service is an essential complement in the training of the Christian worker. This particular factor is just as important to him as the laboratory is to the scientist. Practical Christian service brings the classroom in direct contact with the everyday problems relating to the promulgation of the Gospel; accordingly, it furnishes the best possible motive for thorough study.

In harmony with the law in the spiritual realm, that one receives spiritual impulses only as he shares them with others, this practical phase of the training furnishes the student with the proper outlet for the inspiration received through the Institute. Practical Christian service teaches to do by doing, but apart from the pure experience it affords, it involves a solemn responsibility which is reflected in every department of the institution.

Students are given assignments in accordance with their previous training, experience, and individual preference in view of their future work. The appointment of students to these various services as well as all other matters pertaining to this department is in charge of the Practical Service Committee.

Fort Wayne offers unique advantages for practical Christian service. It is largely an industrial city with a population of 125,000 according to the latest census. There are also numerous fields of service among the adjacent rural communities, nearby towns, and lesser cities. The Bible Institute is the only institution of its kind within the city or a wide radius thereof.

Sunday School teaching is one of the most important forms of our practical Christian work. When the weather is favorable, a voluntary and enthusiastic group of students conducts street meetings downtown in the heart of the business section. On Saturday night some teams of men visit such places as pool halls to distribute tracts and to speak a word for the Master. Visiting the sick in hospitals and needy homes is as much an inlet for divine blessing upon the visitors as an outlet for divine compassion upon the visited. Thus, wherever a student whose heart is aglow meets a hungry soul, a contact for the Gospel story is made.

GOSPEL TEAMS

During past years the calls for Gospel teams have stood foremost in the Practical Service Department. Under the signal favor of God, this method of evangelism has afforded students splendid experience and has brought the happiness of the full Gospel to many hearts. The character of its ministry is primarily evangelistic. Students do not go out to advertise the Institute directly, but to honor Christ in song, testimony, and in the preaching of the Word. A regular team consists of an organized quartet of singers and a speaker.

The teams minister chiefly in denominational churches within a radius of two hundred miles of Fort Wayne. The personnel of the team

depends upon the requirements of a particular assignment. Sometimes a church desires singers only; again, a pastor wants his pulpit supplied for a Sunday; or a young people's society wants a team to render a missionary program. Many local churches have called on the teams to assist them in protracted evangelistic services.

Churches of the following denominations have enjoyed the services of the teams: Methodist Episcopal, Presbyterian, Baptist, Nazarene, Methodist Protestant, Missionary Church Association, Evangelical, Wesleyan Methodist, Friends, United Brethren, Mennonite Brethren in Christ, Defenseless Mennonite, Church of the Brethren, Reformed, Christian and Missionary Alliance, Pilgrim Holiness, Church of God, Christian Union, Christian, and African Methodist Episcopal. Numerous undenominational tabernacles and missions have also been visited. The fine spirit of fellowship sustained with so many pastors of various denominations during past years has been one of the rich endowments of the Bible Institute.

Student Activities

MISSION BAND

Institutions of learning usually have their fraternal and literary societies. The Bible Institute does not have these. Its chief student organization is a society known as the Students' Mission Band. This is an aggressive society organized to create and stimulate interest in worldwide missions. It includes every student, and is largely responsible for the distinctive missionary atmosphere which pervades the Institute. Putting ideals into practice, this society has assumed the sole support of the Rev. Clayton Steiner, a graduate of the Bible Institute, now serving as missionary in Peru, South America. Each Friday evening the students of the Mission Band conduct a public missionary service, and by divine providence many choice missionaries from Africa, India, Afghanistan, Tibet, China, Japan, South America, the Philippine Islands, Armenia, Palestine, Russia, and other countries have addressed these meetings, firing anew the missionary zeal which burned in the hearts of the students. The society also has charge of evening prayer meetings whose weekly schedule includes every mission field.

THE LIGHT TOWER

The Light Tower is the name of the yearbook which is published by the student body of the Institute. The book aims to portray the life of the school and it serves as a memorial of "Bible School days" to graduates. It is an attractive book that reflects credit to the creative ability of its editors and managers. It is by no means an improvised imitation of a college or high school annual. It is designed to reflect the unique atmosphere and life of the Bible Institute.

YOUTH CONFERENCES

A new feature of the Practical Service Department has developed from the call for students to conduct Youth Conferences over week-ends.

This demand has made it possible for a larger group to engage in Gospel ministry. Participants in these conferences represented a number of different denominations. Such convocations of enthusiastic young Christians present a challenge to those who have no objective in life or are half-hearted in their devotion to Christ.

CHORUS TOURS

Each year during the second semester two select groups, a ladies' chorus and men's chorus, make tours taking them to numerous cities in Indiana and adjacent states. Responsive audiences have made it a settled conviction that sacred music is the most beautiful as well as the most satisfying. The programs presented have been distinctly spiritual, with no other objective than to exalt and glorify God. The fact that many attending these programs were led to seek Christ for various needs indicates that the services have been soundly spiritual.

PUBLICATIONS

The Institute publishes a monthly journal which aims to reflect the light of the Bible on us and our times. It also serves as a medium of fellowship for alumni, friends, and constituents. Articles by leading evangelical preachers, teachers, and missionaries are featured. The editorial policy is to save the reader's time by giving him a digest of events and sermons in pointed, readable form. The Bible Vision is sent to any part of the world for one year at only 75 cents; sixteen months for \$100; and three years for \$2.00.

The Institute also has begun the publication of tracts for leaflet evangelism. A series of messages on the following timely themes is published: "Twice Born," "The Baptism with the Holy Spirit," "Must We Repent?" "The Lord for the Body," "The Return of Christ," "The Conquest of Sin," "The Heart of the Missionary Problem," and "The World's Saturday Night."

Entrance Requirements

HIGH SCHOOL PREPARATION

Since the Bible Institute is a theological school of college level and graduation from high school is a requirement in the standard courses, it is advisable to complete high school before coming to the Institute. The Institute offers only a few high school subjects in English and History as a compensating preparation for Bible training to those who have not had the privilege of a high school education.

Not all high school courses are of equal value as a preparation for Bible study. Literary studies are generally of more value than technical, vocational, or scientific courses. However, some commercial work, particularly typing, can be used to good advantage by the prospective Christian worker.

The student should have a good foundation in English. He should do thorough work in his high school English, particularly in the

mechanics of the language. Other language work is also helpful. Four years are recommended, two in Latin and two in a modern language, i. e. German, French or Spanish.

History is also invaluable to serve as a background for Bible study. Ancient and medieval history are particularly important. A year each in ancient, medieval, and modern history is ideal. If that much time can not be devoted to history, a course in world history is advised.

CHRISTIAN CHARACTER

Every applicant must be Christian in character. It is assumed that young people who come to the Institute are definitely committed to God's will for their lives and have a set purpose to prepare themselves to serve Christ.

Admission to the Institute is to be considered a privilege, not a right. The Institute may therefore ask a student to withdraw at any time who proves unworthy of this privilege.

STUDENT ABILITY

The normal student load is fifteen or sixteen hours per week. The maximum is eighteen, except for the first two semesters in the school of Bible, when only sixteen and seventeen, respectively, are permitted.

A student should be able to carry a normal number of hours under ordinary conditions. In order to continue a second semester of work, a student must make passing grades in at least half of his subjects. To continue the second year, he must make passing grades in two-thirds of his first year subjects. The faculty reserves the right to waive these requirements if reasonable cause for failure exists.

ADMISSION

The first step in seeking admission is to make formal application. A form for this purpose is available. (See last page of catalog.) After mailing or presenting it to the Dean, the applicant will wait for the notification of acceptance. A favorable reply must be received before coming to the Institute to enroll.

Accepted applicants are advised to enter the school at the opening of the first or the second semester because it is a distinct advantage to begin studies with the first session of classes. No enrollments are made after the third week in each semester.

PRESENTATION OF CREDITS

Students are asked to send or to bring with them an official transcript of credits earned in high school and in schools of higher learning. If not sent beforehand, they are to be presented to the Registrar upon registering.

Credit will be given for equivalent work done in other schools of recognized merit. Students who desire advanced standing upon the basis of work completed in other schools are also advised to present their credits before or upon entering.

SCHOOL OF BIBLE

The School of Bible is Bible-centered in its curriculum, which is arranged in the following courses: Theological, Christian Education, Missionary, Bible-Academic.

I. THEOLOGICAL

This is the standard three-year Course for Christian workers, The major is Bible, of which 45 credits are required. The student follows an orderly progression in Bible study throughout the six semesters. A foundation in Old Testament work and Inter-Testament history is laid in the first year. In the second year the New Testament is studied along with the more advanced subjects in Theology and book exposition; these are continued in the third year. Ninety-two credits are required for graduation. Six of the elected credits may be chosen from the School of Music. Students with the proper educational qualifications are encouraged to elect Greek in the Middle year.

Entrance requirement: Graduation from high school.

JUNIOR

| First Semester | Periods per week | Second Semester | Periods per week |
|---------------------------------|------------------|----------------------------------|------------------|
| Bible Ia-Old Testament | 5 | Bible Ib-Old Testament | 5 |
| English VI | 3 | English VI | 3 |
| Music I-Elementary Theory | 2 | Music I-Elementary Theory | 2 |
| Personal Evangelism | 3 | Bible III-Acts | 3 |
| Student Efficiency | 1 | Christian Biography | 1 |
| General Chorus | 1 | History III-Inter-Testament..... | 2 |

MIDDLE

| | | | |
|-------------------------|---|-------------------------|---|
| Biblical Theology | 2 | Biblical Theology | 2 |
| Bible | 3 | Bible | 5 |
| Public Speaking | 1 | Public Speaking | 1 |
| *World History | 3 | *World History | 3 |
| Bible II-Gospels | 4 | Psychology | 3 |
| General Chorus | 1 | Apologetics | 2 |

SENIOR

| | | | |
|-------------------------|---|--------------------------|---|
| Biblical Theology | 2 | Biblical Theology | 2 |
| Bible | 4 | Bible | 4 |
| Church History | 2 | Church History | 3 |
| Homiletics | 3 | Homiletics | 2 |
| Apologetics | 2 | Philosophy I or II | 2 |
| Electives | | Electives | |

*Not required if taken in high school.

II. TWO-YEAR THEOLOGICAL

This course is designed for college students who desire the unique advantages of Bible training in the Institute but whose previous work exempts them from some of the requirements of the standard three-year

Course. The Bible content of the Two-Year Theological Course is similar to that of the Theological Course above. Sixty-four credits are required for graduation, eight of which may be from the School of Music. Thirty-eight must be from Bible.

Entrance requirements: Credits for at least one year of college work including first year English.

FIRST YEAR

| First Semester | | Second Semester | |
|--------------------------------|------------------|---------------------------------|------------------|
| | Periods per week | | Periods per week |
| Bible Ia-Old Testament | 5 | Bible Ib-Old Testament | 5 |
| Bible II—Gospels | 4 | Bible III—Acts | 3 |
| Biblical Theology | 2 | Biblical Theology | 2 |
| History II or Missions I | 2 | History II or Missions I 3 or 2 | |
| General Chorus | 1 | Electives | |
| Electives | | | |

SECOND YEAR

| | | | |
|-------------------------|---|-------------------------|---|
| Biblical Theology | 2 | Biblical Theology | 2 |
| Bible | 7 | Bible | 7 |
| Homiletics | 3 | Homiletics | 2 |
| General Chorus | 1 | Apologetics | 2 |
| Electives | | Electives | |

III. CHRISTIAN EDUCATION

The Christian Education Course is arranged to offer preparation for a teaching ministry. The major is Bible, of which forty-two hours are required. The minor in Christian Education includes work in psychology, pedagogy, administration of various types of church schools. Ninety-two hours are required for graduation. Six of the elected credits may be from the School of Music.

The Christian Education Course meets the requirements of the Standard Training Course of the Evangelical Teacher Training Association of which the Fort Wayne Bible Institute is a member. This association embraces approximately eighty Bible institutes, colleges, and seminaries engaged in Christian education of a distinctly Biblical type. Graduates from this course obtain, in addition to the Bible Institute diploma, a diploma from the E. T. T. A., and are authorized to teach the Preliminary Training Course of the Association.

Entrance Requirement: Graduation from high school.

Selection of this course is to be made at the beginning of the Middle year.

JUNIOR

| First Semester | | Second Semester | |
|---------------------------------|---|-----------------------------------|---|
| Bible Ia-Old Testament | 5 | Bible Ib-Old Testament | 5 |
| English VI | 3 | English VI | 3 |
| Music I-Elementary Theory | 2 | Music I-Elementary Theory | 2 |
| Personal Evangelism | 3 | Bible III-Acts | 3 |
| Student Efficiency | 1 | Christian Biography | 1 |
| General Chorus | 1 | History III-Inter-Testament | 2 |

MIDDLE

| | | | |
|---------------------------|---|---------------------------|---|
| Biblical Theology | 2 | Biblical Theology | 2 |
| Bible | 3 | Bible | 4 |
| Christian Education | 2 | Christian Education | 2 |
| *World History | 3 | *World History | 3 |
| Bible II-Gospels | 4 | Psychology | 3 |
| General Chorus | 1 | Apologetics | 3 |

SENIOR

| | | | |
|---------------------------|---|---------------------------|---|
| Biblical Theology | 2 | Biblical Theology | 2 |
| Bible | 4 | Bible | 4 |
| Christian Education | 2 | Christian Education | 2 |
| History of Missions | 2 | History of Missions | 2 |
| Church History | 2 | Church History | 3 |
| Electives | | Electives | |

*Not required if taken in high school.

IV. MISSIONARY

The Missionary Course is designed for prospective missionaries. The major is Bible, of which forty hours are required, and the minor is Missions. The courses in Missions include History of Missions, Principles and Practices, Non-Christian Religions, First Aid and Home Hygiene. Men are required to take ten hours from the Department of Missions and are advised to take Homiletics as one of their electives. Women must take twelve hours from the Department of Missions. One language course, Greek, Spanish, or French, must be elected in the Middle year. This requirement is waived if the student has had two years in one of these languages in high school. Ninety-two hours are required for graduation. Six of the elected credits may be from the School of Music.

Entrance Requirement: Graduation from high school.

Selection of this course is to be made at the beginning of the Middle year.

JUNIOR

| First Semester | | Second Semester | |
|---------------------------------|------------------|-----------------------------------|------------------|
| | Periods per week | | Periods per week |
| Bible Ia-Old Testament | 5 | Bible Ib-Old Testament | 5 |
| English VI | 3 | English VI | 3 |
| Music I-Elementary Theory | 2 | Music I-Elementary Theory | 2 |
| Personal Evangelism | 3 | Bible III-Acts | 3 |
| Student Efficiency | 1 | Christian Biography | 1 |
| General Chorus | 1 | History III-Inter-Testament | 2 |

MIDDLE

| | | | |
|---------------------------|---|---------------------------|---|
| Biblical Theology | 2 | Biblical Theology | 2 |
| Bible | 3 | Bible | 4 |
| History of Missions | 2 | History of Missions | 2 |
| Language | 3 | Language | 3 |
| *World History | 3 | *World History | 3 |
| Bible II-Gospels | 4 | Electives | |

SENIOR

| | | | |
|-------------------------|---|-------------------------|---|
| Biblical Theology | 2 | Biblical Theology | 2 |
| Bible | 4 | Bible | 4 |
| Church History | 2 | Church History | 3 |
| Missions | 4 | Missions | 4 |
| Electives | | Apologetics | 2 |

*Not required if taken in high school.

V. THE BIBLE-ACADEMIC COURSE

(Four Years)

This course is intended for those who have not had a high school education and can therefore not enter the regular Courses outlined above. The course begins with high school work in English and History. The first year is devoted to a study of English Grammar, Composition, Oral Interpretation, and Bible I. In the second year the student continues his study of English in rhetoric and composition. He also studies General History and advances in Bible studies. The third and fourth years run practically parallel to the second and third of the standard three-year Courses. 121 credits are required for graduation, 14 of which may be from the School of Music.

Entrance requirements: Applicants must be 17 years of age. They should have a working knowledge of the English language.

PREPARATORY

| First Semester | | Second Semester | |
|----------------------------------|---|-----------------------------------|---|
| Periods per week | | Periods per week | |
| Bible Ia-Old Testament | 5 | Bible Ib-Old Testament | 5 |
| English II-Oral Interpretation.. | 2 | English II-Oral Interpretation .. | 2 |
| English III-Grammar | 3 | English III-Grammar | 3 |
| English IV-Composition | 2 | English IV-Composition | 2 |
| Student Efficiency | 1 | Christian Biography | 1 |
| General Chorus | 1 | History III-Inter-Testament.... | 2 |

JUNIOR

| | | | |
|---------------------------------|---|---------------------------------|---|
| Bible II-Gospels | 4 | Bible III-Acts | 3 |
| Personal Evangelism | 3 | Bible | 3 |
| English V | 3 | English V | 3 |
| History I-World | 3 | History I-World | 3 |
| Music I-Elementary Theory | 2 | Music I-Elementary Theory | 2 |
| General Chorus | 1 | Electives | |

In his Middle and Senior years, the student in the Bible-Academic Course may elect a minor in Theology, Missions, or Christian Education. The diploma will designate the minor: Theological-Academic, Missionary-Academic or Christian Education-Academic.

Students enrolling for the Bible-Academic Course who have some but not all of their high school credits, are entered according to their educational level. Diagnostic tests in English are usually given to determine the rank to which they are entitled.

EVENING CLASSES

Although most classes are held during the daytime the Institute nevertheless offers a few of its regular courses during evening hours for the benefit of residents of Fort Wayne and community.

During 1939-40 two Bible courses will be offered as evening classes. In the first semester, beginning Thursday evening, September 14th, a course will begin in the Prison Epistles—Ephesians, Philippians, Colossians, and Philemon. (For description see Bible VIIIb under Curriculum.) This is a regular three-hour course but it will meet on only two evenings each week for extended periods, namely, Tuesday and Thursday evenings at 7:30. The cost of tuition including registration and library fees is \$8.50. The instructor will be Mr. Witmer.

In the second semester Mr. Leightner will teach the Corinthian Epistles (Bible VIIIa) on the same evenings and at the same hour. The value of this course is also three semester hours and the cost, which includes the registration and library fees, is \$8.50. The first class will meet on January 30 at 7:30 P. M.

Visitors are welcome to attend classes without charge.

Curriculum

Method of Study

The direct method of Bible study is followed for the most part. We conceive our task to be that of leading the student directly into the truth as revealed in God's Word rather than merely confirming him in a special point of view or a particular school of interpretation. By the direct method we mean that the student himself is placed in the center of the educational process. He is active rather than passive in acquiring knowledge. He himself makes a firsthand study of the Bible. He is taught to search for facts, to perceive relationships, and to draw warranted inferences. It is expected that the student will experience the joy of discovery as he is advanced by questions and projects, and that he will acquire skill in interpreting the Bible.

ENGLISH BIBLE

Old Testament

BIBLE Ia—Old Testament. A survey of the Pentateuch and the Historical books. Each book is studied as to introduction, content analysis, and distinctive teachings. Attention is given to Bible geography, historical development, and to the progressive unfolding of the central truths of revelation. Required in all courses. Value, 5 semester hours. Offered in first semester of each year.

BIBLE Ib—Old Testament. This is a continuation of the survey of Bible Ia and treats the Poetical and Prophetical books by the same method of instruction. The books are taken up in chronological order, and studied in relation to their respective historical backgrounds. Special attention is given to the developing Messianic hope disclosed by the prophets during the era when the shadows of a spiritual, moral, and political night were deepening for Israel. Required in all courses. Value, 5 semester hours. Offered in second semester of each year.

BIBLE IV—Pentateuch. This is an advanced study dealing with authorship and composition, the Creation, the Deluge, beginnings of National history, modern destructive hypotheses, and the establishment of the Jewish nation with its institutions. The principles of the Decalogue are studied with respect to their central place in the Jewish economy and as to their perpetual importance for society. Tabernacle symbolism and the Messianism of the Pentateuch are carefully studied. Value, 3 semester hours. Offered in 1939-40.

BIBLE Va—Job. An exegetical study of this ancient masterpiece. The great truths that are revealed regarding suffering and God's providence in this matchless drama are discovered. Value, 2 semester hours.

BIBLE Vb—Psalms. An advanced study in the Psalms considering questions of authorship, date, composition, and classification. Individual psalms are studied minutely from historical, experiential, and Messianic standpoints. Study is by questions and project assignments. Value, 3 semester hours.

BIBLE VIa—Isaiah. An intensive study of the book sometimes known as "The Gospel According to Isaiah." The critical problem of authorship is briefly treated. The tremendous social and political upheavals of Isaiah's day are observed. The Messianic and millennial prophecies are examined. Assignments, collateral reading, notes. Value, 3 semester hours. Offered in 1940-41.

BIBLE VIIb—Jeremiah. A study of Judah's religious, moral, and civil decline along with its relation to other major nations of that period. Attention is given to the mission of the prophet, his character and work. Lectures, assignments, notes. Value, 2 semester hours. Offered in 1939-40

BIBLE VIc—Daniel. A biographical, dispensational, prophetical study. The life and times of the prophet are considered. The critical problem of authorship and date is taken up. The Messianic and Gentile-kingdom prophecies are given special examination. Value, 2 semester hours. Offered in 1940-41.

New Testament

BIBLE II—The Gospels. A study of the four Gospels. The person and work of Christ are studied and the peculiar characteristics of each book are noted. This is a unified course which aims to set forth the complete biography of our Lord with the necessary geographical and historical detail. In this subject there are unusual advantages to study the messages and the art of the world's master Teacher. Required in all Courses. Value, 4 semester hours. Offered in first semester of each year.

BIBLE III—The Acts. This is an introductory study to the latter half of the New Testament. It follows Bible II and continues the study of Christ as the ascended Lord operating through the church by the Holy Spirit. The history of the early church, the missionary journeys of the Apostle Paul, and the labors of other Apostles are noted. This course prepares the student for the more advanced expositional studies in Bible VII-XI. Required in all Courses. Value, 3 semester hours. Offered in second semester of each year.

BIBLE VII—Romans and Galatians. An exposition of these Epistles. In the former the logical unfolding of the great doctrines of sin, salvation, and sanctification are studied. Special attention is also given to the chapters relating to God's plan for Israel, and to the believer's obligation to God, to government, and to his fellow men. In the latter the relation of law and grace and the great doctrine of justification by faith apart from works are treated. Value, 3 semester hours. Offered in 1940-41.

BIBLE VIIIa—The Corinthian Epistles. An advanced study of I and II Corinthians. An analysis is made of the church and pastoral problems that gave rise to these letters and the application of Christian principles to their solution. Value, 3 semester hours. Offered in 1939-40 as an evening class.

BIBLE VIIIb—The Prison Epistles. This group includes Ephesians, Philippians, Colossians, and Philemon. Each book is analyzed and its distinctive message discovered. The transcendent truths of the exaltation of Christ, the union of the church with its Head, and the consummation of God's redemptive purpose give these books special importance. Value, 3 semester hours. Offered in 1939-40 as an evening class.

BIBLE IX—Pastoral Epistles. An exegetical study giving special attention to the doctrinal and practical aspects of these epistles with special reference to their bearing upon modern pastoral problems. The nature of the organization of the New Testament church, its function and development are also given attention. Value, 2 semester hours. Offered in 1940-41.

BIBLE IXa—Hebrews. An exposition of this important Epistle, which shows the pre-eminence of Christ and the superiority of Christianity to the Old Testament economy. A study that coordinates the institutions of the law with the revelations of the Gospel and unfolds the present High-Priestly ministry of Jesus Christ. Value, 2 semester hours. Offered 1940-41.

BIBLE X—General Epistles. By analysis and exegesis the teachings of this section of the New Testament are set forth as they relate to doctrine and to the everyday problems of Christian living. The practical Christian life insisted upon in these epistles lends balance to the more doctrinal letters of the New Testament. Value, 3 semester hours. Offered in 1939-40.

BIBLE XI—The Apocalypse. This course consists of an exposition of the Book of Revelation. The predictions found therein are interpreted in the light of Old Testament prophecy, history, and current events. While the prophetic element is kept prominent, the devotional and practical value of the book is also emphasized. Value, 3 semester hours. Offered in 1939-40.

THEOLOGY

Biblical Theology

In these courses the truths pertaining to the cardinal doctrines of the Scriptures are arranged in systematic form and brought within the ready grasp of the student. Invaluable in these days of apostasy to establish the student in "the most holy faith."

BIBLE XII—A study of the doctrine of God, His character and works; of Man, his creation, nature, and fall; of Christ, His pre-existence, His incarnation, and His redemptive work; and of the person of the Holy Spirit and His work in creation, the world, and believer. Text: Pardington's "Outline Studies in Christian Doctrine." Collateral reading and class discussions. Required in all graduate courses. Value, 4 semester hours. Offered two hours in each semester of 1940-41.

BIBLE XIII—A study of the doctrine of the Scriptures, showing them to be a revelation of God, inspired of Him, and thoroughly accredited; of the doctrine of Angels, Demons, and Satan; of Sin, its nature, extent, and penalty; of the Church, its origin, ministry, and destination; the second coming of Christ, the Millennium, the resurrection, and judgment. Text: Same as in Bible XII. Required in all graduate courses. Value, 4 semester hours. Offered two hours in each semester in 1939-40.

Pastoral Theology

PASTORAL THEOLOGY—This study deals with the ministry of the Christian worker outside the pulpit, including the oversight of all the divinely instituted offices of the church and the best methods of conducting the different services. Value, 2 semester hours. Required in Theological Course. Offered in 1940-41.

APOLOGETICS

APOLOGETICS I—Christian Evidences. The purpose of this course is to set the proofs of Christianity before the student that he may be grounded in the fundamental truths of the Word, and be enabled to meet

the assaults of the modernist. Required in standard courses. Value, 2 semester hours. Offered in 1938-39.

APOLOGETICS II—General Introduction. A comprehensive course that teaches how our Bible came into existence and how it came down to us. It deals with the inspiration, canonicity, genuineness, authenticity, credibility, and authority of the Holy Scriptures. It takes up the transmission and preservation of the text from the most ancient manuscripts to recent English versions. Text: "General Biblical Introduction" by H. S. Miller. Required in the Theological and Christian Education Courses. Credit, 3 semester hours. Offered in 1939-40.

APOLOGETICS III—Special Introduction. This subject deals with the individual books of the Bible and discusses their canonicity, integrity, authorship, time and place of composition, contents, purpose, and peculiarities. A study is made of the critical problems in relation to the authorship and integrity of the Pentateuch, the authorship and unity of Isaiah, Daniel, Zechariah, and the other books, the Synoptic problem, the Johannine and other problems. Value, 2 semester hours. At present offered as a part of Book expositions.

APOLOGETICS IV—Biblical Archeology. A study of this subject offers a valuable apologetic for the Christian faith and familiarizes the student with the most important of the recent archeological discoveries bearing upon the Bible. Textbook, collateral reading, class discussions. Value, 2 semester hours. Offered in 1940-41.

BIBLICAL INTERPRETATION. The general plan of this course is adapted to meet the practical needs of students of Theology. Its purpose is to familiarize the student with the methods and principles involved in the correct interpretation of the Scriptures. Elective. Value, 2 semester hours. Offered in 1939-40.

PHILOSOPHY

PHILOSOPHY I—Christian Philosophy. A course intended to fortify the student against philosophical skepticism and superstitious credulity. Christianity is set forth in comparison with other philosophical systems and is demonstrated to be the only adequate system. A textbook is used as the basis of class discussions: "The Philosophy of Christianity" by Leander S. Keyser. J. B. Walker's book, "The Philosophy of the Plan of Salvation" and other works are read as collateral. Courses I and II in Philosophy are offered in alternate years. Elective. Offered in 1940-41. Value, 2 semester hours.

PHILOSOPHY II—Christian Ethics. This course treats both the theoretical and practical aspects of the subject. The source and principles of the Christian ideal are studied and contrasted with the humanistic theories. A timely course in this day of confusion of right and wrong. Textbook used. Elective. Value, 2 semester hours. Offered in 1939-40.

PHILOSOPHY III—Psychology. A course which treats the elementary and essential principles of the mental life. The psychology which is taught in the Institute is grounded in Biblical truth and is set over against the psychology which is speculative and pagan. Required in the Theological and Christian Education Courses. Text: "Christian Psychology" by Norlie. Value, 3 semester hours. Offered in 1940-41.

HISTORY

HISTORY I—World History. A study of history reveals to us the dealings of God with man and enables us, by a knowledge of the past, to understand better our duty to the present. The study of World History furnishes a foundation for other courses in history and allied subjects. This correlation and God's providence in the world are kept in view. Text: Myer's "General History." Required in all three and four year courses unless equivalent credit can be presented. Value, 6 semester hours. Offered each year, 3 hours in each semester.

HISTORY IIa—Church History. A study of the first thousand years of Christianity. Special attention is given to the historic background of Christianity, the Roman Persecution, the theological controversies, the creeds, the merging of church and state, and the development of the Roman Catholic system. Text, collateral, and semester thesis. Required. Value, 2 semester hours. Offered in first semester of each year.

HISTORY IIb—Church History. This course begins with the dawn of the Reformation tracing the first rays of the light which heralded a new day. The Reformation is studied from the standpoint of the work and doctrines of the great Reformation leaders. The lines of the Reformation history are pursued into the resulting Protestant denominations of modern times. Text, collateral reading, and semester thesis. Value, 3 semester hours. Offered in the second semester of each year.

HISTORY III—Inter-Testament History. This course is a study of Jewish history from the time of Malachi to the birth of Christ. It is of twofold interest and importance. First, it furnishes the historical counterpart of Daniel's and other Old Testament prophecies, treating Babylonian, Medo-Persian, Greek, Roman, and Jewish history of the period. Second, it furnishes the historical background for the Palestine of the days of Christ's earthly life. It deals with the origin and development of the Pharisees, Sadducees, and other Jewish sects common in gospel history and introduces the student to the Herodian family which ruled in Judea when Christ was born. Required. Value, 2 semester hours. Offered in second semester of each year.

HISTORY IV—Christian Biography. A reading course in the biographies of great Christian men and women. Biographies are selected for their spiritual as well as their informative value. Required of first year students in three- and four-year Courses. Value, 1 semester hour. Offered each year.

MISSIONS

MISSIONS I—History of Missions. A survey of the progress of missionary extension from its inception to the present. The greater part of the course deals with the modern era: a study of the individual fields, the general facts, the work accomplished, the outstanding problems and needs of each. Text: "The Progress of World-Wide Missions"—Glover. Collateral reading, projects, research. Required in Missionary and Christian Education Courses. Value, 4 semester hours. Offered each year, two hours in each semester.

MISSIONS II—Missionary Principles and Practices. An invaluable course for all prospective missionaries. Required by some mission boards of candidates. It treats of such themes as missionary administration and support, the qualifications of missionaries, and other problems of practical value. A special study is made of the principles of self-government, self-support, and self-propagation of the native church. Text: Brown's "The Missionary." Value, 2 semester hours. Offered in 1940-41.

MISSIONS III—Non-Christian Religions. This study consists of an interpretation of the great religions of the world, as well as a presentation of such facts concerning their origin and history as one needs to interpret them rightly. This is all to the one end that the superlative elements of the only true religion of Christ may be set forth and emphasized. The work consists of historical outline studies, and text: "Handbook of Comparative Religions"—Kellog. Value, 2 semester hours. Offered in 1939-40.

MISSIONS IV—Deaconess Course. A study of the principles of New Testament sociology and the practical aspect of Christian work in homes and among the underprivileged. An examination of the office of Deaconess. For women only. Value, 2 semester hours. Offered in 1939-40.

MISSIONS VIa—Home Hygiene. The Red Cross Course in "Home Hygiene and Care of the Sick" is not designed to substitute for courses either in nursing or medicine. Special emphasis is placed on personal hygiene and health habits with preventive measures to combat disease. A study of both constitutional and infectious diseases is made, stressing those diseases peculiar to each Mission field. Methods of home care of the sick are taught as well as practice work in various nursing measures. The American Red Cross gives a certificate to those who satisfactorily complete this course. Value, 2 semester hours. Offered in 1940-41.

MISSIONS VIb—First Aid. The Red Cross Course in First Aid is offered as a continuation of the course having been given in the first semester. It aims to give the student the necessary knowledge of the anatomy of the human body needed to efficiently give first aid care; also to give an understanding of all the most common emergencies with the care and treatment of each. The American Red Cross gives a certificate to the first aider who satisfactorily completes this course. Value, 2 semester hours. Offered in 1939-40.

CHRISTIAN EDUCATION

CE-I—Child Psychology. This course deals with the normal growth and development of the child, tracing the outstanding characteristics through the different periods of the unfolding life. A study is made of the forces of life building as well as the phases and fields of the religious education of the child. Value, 2 semester hours. Required in Christian Education Course. Offered in 1940-41.

CE-II—Principles and Methods of Teaching. This course deals with the fundamental principles of teaching and typical methods which may be used in Bible school work. A study of the pedagogy of Jesus is made with a twofold aim: to see how He taught and to apply His methods. Value, 2 semester hours. Required in Christian Education Course. Offered in 1939-40.

CE-III—Sunday School Administration. This course deals with the organization and working of the Sunday School. Its officers, their duties, and the principles for growth designed to make this educational agency all that it ought to be in a community are studies of this course. Text: "The Sunday School in Action" by Benson. Required in the Christian Education Course. Value, 1 semester hour. Offered in 1940-41.

CE-IV—Summer Bible School Administration. This course deals with this educational agency of the church as Course III deals with the Sunday school. The need and value of such a school and how to organize, promote, and conduct it are studied. Required in the Christian Education Course. Value, 1 semester hour. Offered in 1940-41.

CE-V—Bible Story Telling. This course presents the underlying principles of story telling and the best methods used by the successful story teller. Some time is devoted to practice which is essential to those acquiring the art. Required of students specializing in children's work in the Christian Education Course. Value, 1 semester hour. Offered second semester, 1939-40.

CE-VI—Church Supervision. A course designed to give the student suggestive plans for efficient organization of the church in all its departments, and to acquaint him with the best methods and means by which the church can perform her God-given task. Required of students specializing in administrative work. Value, 1 semester hour. Offered in 1939-40.

CE-VII—Psychology. For description see Philosophy III. Required of students specializing in adult work. Value, 3 semester hours.

CE-VIII—Student Efficiency. The aim of this course is to acquaint the student with the fundamental laws which underlie effective study. The theme of the course is How To Study. Effective methods, conditions, and attitudes of study receive major emphasis. It is practical in its application, leaving the student with definite principles which can be applied in any field of intellectual endeavor. Required. Value, 1 semester hour. Offered in the first semester of each year.

HOMILETICS AND PUBLIC SPEAKING

HOMILETICS—This course deals with the preparation and delivery of sermons. It aims to acquaint the student with the principles by which this twofold object may be accomplished. Exercises in sermon construction constitute a considerable part of the class work. The importance of relying upon the definite guidance and illumination of the Holy Spirit in the ministry of God's Word is ever emphasized. Required in the Theological Course. Value, 5 semester hours. Offered each year 3 hours in the first semester and 2 in the second.

PUBLIC SPEAKING—This course is largely a study of the fundamental qualities of delivery. Its aim is the formation of correct speech habits, and it is intended to meet the question that many students ask, "How is it possible for me to improve my speech?" Required in the three-year Theological Course. Value, 2 semester hours. Offered 1 hour in each semester every year.

EVANGELISM

PERSONAL EVANGELISM—A course designed to aid the Christian in the art of soul winning. How to present Christ effectively and intelligently in personal conversation. The varying needs and problems of the unsaved are considered. The latter part of the course is given to a discussion of modern cults such as Christian Science, Spiritism, Mormonism, and Russellism. Required in all three- and four-year courses. Value, 3 semester hours. Offered in the first semester of each year.

HISTORY OF REVIVALS AND REVIVAL LEADERS—The aim of this course is to teach evangelism from two points of view: (1) the history of American revivalism and evangelism; (2) the best modern methods of pastoral and public evangelism. Realizing that evangelism is a passion more than a technique, it is hoped that the student will seek to "catch" the evangelistic passion by his study of this course. Value, 2 semester hours. Offered in 1939-40.

LANGUAGES

New Testament Greek

GREEK I—The purpose of this course is to prepare the student to read the New Testament in its original language. It first lays a foundation in vocabulary and grammar, and later includes the translation of portions of the New Testament. The study of Greek is valuable because the original language is more forceful and exact than any translation. Elective. Value, 3 hours each semester.

GREEK II—The second year is devoted to the reading of selections from various New Testament books, including, in addition to their translation, a study of the problems of grammar and construction which are found in them. The required books are: a New Testament Greek text, a Greek lexicon, and a Greek grammar. Elective. Value, 6 semester hours.

Twenty-five

Romance Languages

SPANISH I—This Course in elementary Spanish aims to present the essential facts of Spanish grammar and their application in oral and written exercises. The course includes reading lessons based upon Spanish customs and history and the reading of the portion of the New Testament in Spanish. Elective. Value, 6 semesters hours.

FRENCH I—The aim of Elementary French is, first, to give a clear understanding of the grammatical relations of the language, and, secondly, to create familiarity with the spoken language. The phonetic alphabet of the Association Phonétique Internationale is used as a discipline in pronunciation. Oral drill, simple reading, and dictation are stressed in class work. Elective. Value, 6 semester hours.

ENGLISH II—Oral Interpretation. This course is designed to teach the student the fundamental principles of expression. There is much practice on standard literature to secure clear and distinct utterance, variety in inflection and emphasis, and naturalness of manner. Special attention is given to reading of Scripture in public. Value, 4 semester hours. Required in Bible-Academic Course. Offered each year, 2 hours in each semester.

ENGLISH III—A thorough course in English Grammar. The aim of the study is threefold: to prepare the student for advanced English, to form the habits of correct speech, and to gain an insight into the principles of the English language. Required in Bible-Academic Course. Value, 6 semester hours. Offered each year, 3 hours in each semester.

ENGLISH IV—This course in composition aims to lay a foundation of "Sentence sense" which will enable the student to build well-constructed themes. It insists on the application of grammar for sentence-improvement and offers many devices for the development of style in writing. Required in the Bible-Academic Course. Value, 4 semester hours. Offered each year, 2 hours in each semester.

ENGLISH V—An advanced course giving thorough instruction in the principles and practice of rhetoric and composition. The aim of this course is to promote self-cultivation in correct speech and writing. Required in the second year of the Bible-Academic Course. Value, 6 semester hours. Offered each year, 3 hours in each semester.

ENGLISH VI—This course is equivalent to the first year of college English. It consists of a review of grammar and punctuation, and the study of the organization of composition, the methods of developing ideas, paragraphing, effective sentence construction, and effective diction. A weekly theme is required of all students. If a student is not prepared to carry this subject, the right is reserved to enter him in a more elementary English course. Required in all three- and four-year courses. Value, 6 semester hours. Offered each year, 3 hours in each semester.

SCHOOL OF MUSIC

The School of Music is one of the major departments of the Bible Institute and its courses are integrated with the regular courses of the School of Bible. The School of Music specializes in sacred music, and, while striving for high standards, it is chiefly devoted to music that is essentially spiritual and expressive of Christian experience and faith. Its purpose is to train men and women for gospel singing, directing, piano playing, and hymn writing.

The same general entrance requirements obtain for the School of Music. Applicants must be Christian in character, and must be high school graduates to enroll. Those who have not completed high school must take the Academic courses in English in which they are deficient.

I. STANDARD BIBLE-MUSIC COURSE

(Three Years)

This is the standard course in sacred music. The student follows an orderly progression in the study of music, beginning with elementary and advanced theory in the first year, continuing with harmony and sight singing in the second year, and composition and hymnology in the third year. At the same time he is pursuing a major in voice, piano, or organ. Two private lessons in one or two of these subjects are taken each week with certain practice requirements. One hour each day is required in organ and voice, and one and one-half hours of daily practice for each lesson in piano.

This course includes 25 hours of Bible, Personal Evangelism, Christian Biography, and English VI. Other subjects may be chosen as electives from the School of Bible. 96 semester hours are required for graduation.

Students must elect piano as one of their majors in the first year unless they are able to accompany themselves. Only advanced piano students may study organ.

FIRST YEAR

| First Semester | Second Semester |
|-------------------------------------|-------------------------------------|
| Hours of Credit | Hours of Credit |
| Bible Ia—Old Testament 5 | Bible Ib—Old Testament 5 |
| Music I—Elementary Theory 2 | Music Ic—Advanced Theory 3 |
| Voice, Piano, or Organ 4 to 6 | Voice, Piano, or Organ 4 to 6 |
| Music III—General Chorus 1 | Christian Biography 1 |
| Personal Evangelism 3 | |

Twenty-seven

SECOND YEAR

| | | | |
|---------------------------------|--------|--|--------|
| Bible II—Gospels | 4 | Bible II—Acts | 3 |
| Bible XII—Biblical Theology ... | 2 | Bible XII—Biblical Theology .. | 2 |
| Music II—Sight Singing | 2 | Music II—Sight Singing | 1 |
| Music V—Harmony | 2 | Music V—Harmony | 2 |
| Voice, Piano, or Organ | 4 to 6 | Voice, Piano, or Organ | 4 to 6 |
| Music III—General Chorus | 1 | Music V _k —Keyboard Harmony | 1 |

THIRD YEAR

| | | | |
|---------------------------------|--------|---------------------------------|--------|
| Bible XII—Biblical Theology.... | 2 | Bible XII—Biblical Theology.... | 2 |
| English VI | 3 | English VI | 3 |
| Music IV—Conducting | 1 | Music IV—Conducting | 1 |
| Music VI—Composition | 2 | Music XX—Hymnology | 2 |
| Music IX—Normal Training | 1 | Music IX—Normal Training ... | 1 |
| Voice, Piano, or Organ | 2 to 3 | Voice, Piano, or Organ | 4 to 6 |
| Music III | 1 | | |

II. TWO-YEAR BIBLE-MUSIC COURSE

The Two-Year Bible-Music Course is for students who desire a shorter course than the Standard Course described above. It has the same Bible content as the three-year course but the student is advanced in only two of the three years of music.

Two private lessons are taken each week in voice, piano, or organ. Piano is required in the first year of all students unless they are able to accompany themselves. Only advanced piano students may elect organ. 64 semester hours are required for graduation.

FIRST YEAR

| First Semester | | Second Semester | |
|---------------------------------|--------|---------------------------------|--------|
| Hours of Credit | | Hours of Credit | |
| Bible Ia—Old Testament | 5 | Bible Ib—Old Testament | 5 |
| Bible XII—Biblical Theology.... | 2 | Bible XII—Biblical Theology.... | 2 |
| Music I—Elementary Theory .. | 2 | Music Ic—Advanced Theory ... | 3 |
| Voice, Piano, Organ | 4 to 6 | Voice, Piano, Organ | 4 to 6 |
| Music III | 1 | | |

SECOND YEAR

| | | | |
|---------------------------------|--------|--|--------|
| Bible II—Gospels | 4 | Bible III—Acts | 3 |
| Bible XII—Biblical Theology.... | 2 | Bible XII—Biblical Theology.... | 2 |
| Music II—Sight Singing | 2 | Music II—Sight Singing | 1 |
| Music V—Harmony | 2 | Music V—Harmony | 2 |
| Voice, Piano, Organ | 4 to 6 | Voice, Piano, Organ | 4 to 6 |
| Music III | 1 | Music V _k —Keyboard Harmony | 1 |

Curriculum

(For Bible subjects, see School of Bible)

MUSIC I—Elementary Theory. This is a beginner's course in the theory of music and is a popular study for Bible as well as music students. It is a course in the rudiments of music: notes, rests, time, absolute pitch, structure of major keys. Some time is given to sight singing in all of the major keys. Value, 4 semester hours. Offered each year, 2 hours in each semester.

MUSIC Ic—Advanced Theory. This course follows the first semester in Elementary Theory and is required in the Bible-Music Courses. A study of accidentals, diatonic and chromatic tones, enharmonic change, enharmonic change of keys, modulation, intervals. An analysis of the major, minor, and chromatic scales. Sight singing in the major and minor keys. Value, 3 semester hours. Offered in the second semester of each year.

MUSIC II—Sight Singing. Designed to enable the student to read music at sight. Ear training, including attendant phases of articulation and phrasing; study of rhythms. Required. Value, 3 semester hours. Offered each year, 2 hours in the first semester and 1 hour in the second.

MUSIC III—General Chorus. This course trains in chorus singing, art of expression, diction, and interpretation. Required in all courses in every year. Value, 1 semester hour. Offered each year in first semester.

MUSIC IV—Conducting. This course includes the technique of choral conducting, and leading of congregations; the correct and approved way of beating time and method of conveying rhythms, dynamics, and interpretation through the baton. Required. Value, 2 semester hours. Offered each year, 1 hour each semester.

MUSIC V—Harmony. The principles of building and resolving chords are mastered by oral and written methods. Examples are harmonized. Students write and harmonize original melodies as an introduction to hymn writing. Required. Value, 4 semester hours. Offered two hours in each semester of each year.

MUSIC Vk—Keyboard Harmony. The principles of harmony are applied to the piano. Transposition of short themes and hymns is included. While most of the work is done on the piano, some written and oral material in melody writing and ear training is included. Required as a supplementary study to the second semester of Harmony (Music V). Value, 1 semester hour.

MUSIC VI—Composition. Advanced study in chord formation, counterpoint, and composition of songs and their adaptation to select words. Required in Standard Course. Value, 2 semester hours.

MUSIC VII—Voice. Private voice culture includes voice building, care and use of voice, proper tone production and placement, breathing, phrasing, and interpretation. Students in the School of Bible electing one lesson per week will be required to practice one-half hour per day. One credit will be allowed for a semester's work. Students in the School of Music will be allowed 2 credits for a semester's work, due to a double amount of practice required.

MUSIC VIII—Piano. In private piano instruction emphasis is laid on a thorough technical foundation. All students are prepared carefully in scales (thirds, sixths, eighths, tenths; in staccato, contrary motion, and cannon), arpeggios in all forms and touches, and octaves. This background, combined with the classics and additional exercise material develops hymn playing, eliminating the difficulties of playing hymns in any key. Hymns are studied from the standpoint of pedalling, time, rapid reading, and transposition. Value, 3 semester hours for one lesson per week with one and one-half hours of daily practice.

MUSIC VIII—Organ. Stainer's organ method is used to give students a careful foundation. The pedal studies are by Koch. Shorter organ pieces and works are used. Students are given practical help in adapting gospel hymns and choruses to organ. The instrument used is the Orgatron, an electrically amplified organ with the registration of a regular pipe organ. It is well suited to teaching purposes for it conforms to the standards and measurements of the American Guild of Organists. Open to advanced piano students upon recommendation of the teacher. Value, 2 semester hours for one lesson per week with four to four and a half hours of practice.

MUSIC IX—Normal Training. This course is designed to train the student to teach the theory of music. It is a self-evident fact that it is one thing to train a pupil in the technique of music, and quite another and different thing to train a future teacher in the art of imparting such instruction to others. Hence a necessary training, to attain approved and satisfactory results in teaching. Required in Standard Course. Value, 2 semester hours.

MUSIC X—Special Chorus. Advanced chorus work with selected mixed voices. Value, 1 semester hour. Second semester of each year.

MUSIC XI—Women's Chorus. Special chorus work for women. Value, 1 semester hour. Second semester of each year.

MUSIC XII—Men's Chorus. Special chorus work for men. Value, 1 semester hour. Second semester of each year.

MUSIC XX—Hymnology. A history of Christian music. Types of music and methods used in the Church from the beginning of the Christian era to the present. The lives of representative hymn writers are reviewed, together with stories of hymns. Required in the Standard Bible-Music Course. Value, 2 semester hours.

SCHOOL OF CORRESPONDENCE

PURPOSE

The School of Correspondence is established to extend the instruction of the Fort Wayne Bible Institute to worthy students who for various reasons cannot attend the Institute. It presents a real opportunity to several classes of persons:

(1) Persons who cannot afford to give up their employment may take correspondence studies while their income continues.

(2) Persons expecting to become students at the Institute may begin studying for credit before coming to the Institute.

(3) Ministers, church workers, Sunday School teachers, elders, deacons, or other officers may better qualify themselves for their ministries by systematic studies.

(4) Laymen who want to know God better and desire to serve Him better will be profited by systematically studying the Word.

(5) Pastors who find their church leaders in need of a more thorough preparation for their work may organize and supervise group study. Special club rates for credit, and the very low cost to non-credit students afford special advantage to such groups.

MERITS

That educational work can be successfully carried on by correspondence study has been well demonstrated by numerous colleges and universities. The University of London in England and the University of Chicago in America are among leading institutions which teach the courses leading to college and graduate degrees by the correspondence plan.

A SUGGESTION TO PASTORS

Pastors will be especially attracted by the School of Correspondence as a means of training lay workers. If these leaders are to have the training needed they should go beyond the instruction and study of the congregation in general. It is suggested that the pastor organize a club of six or more and act as their supervisor in working out correspondence studies. A special club rate is one of the advantages of such a plan.

COURSES OFFERED

BIBLE C1—The Pentateuch. A study of Genesis, Exodus, Leviticus, Numbers, Deuteronomy. Credit, 2 semester hours. \$7.00.

BIBLE C2—The Historical Books. A survey of the historical books of the Old Testament from Joshua to Nehemiah, combining into one coordinated unit the study commonly offered in Synthetic Bible and Bible History and Geography. Credit, 2 semester hours. \$7.00.

BIBLE C3—The Poetical Books. A study of Job, The Psalms, Proverbs, Ecclesiastes, Song of Solomon. Credit, 1 semester hour. \$3.50.

BIBLE C4—The Prophets. A survey of the Major and Minor prophets

taken up in their chronological order with special attention to the development of the Messianic hope. Credit, 3 semester hours. \$10.50.

BIBLE C5—The Gospel of Matthew. An important study of the Gospel that reveals Jesus as the fulfillment of Israel's Messianic hope. Credit, 2 semester hours. \$7.00.

BIBLE C6—The Gospel of John. An invaluable study for personal workers and Bible teachers. Credit, 2 semester hours. \$7.00.

BIBLE C7—The Acts of the Apostles. A basis for all later New Testament study. The founding and growth of the early Church, the missionary journeys of the Apostle Paul are noted. Credit, 3 semester hours. \$10.50.

PERSONAL EVANGELISM. A thorough course designed to aid the Christian, whether minister or layman, in acquiring the art of soul winning. Credit, 2 semester hours. \$7.00

ENGLISH VI C—First semester of first-year college English. (See English VI in School of Bible.) Credit, 3 semester hours. \$10.50.

SUPERVISION

The School of Correspondence is under the Supervision of the Director, Professor Loyal R. Ringenberg, A. B., M. A., who is a regular instructor of Bible and History in the Institute. Mr. Ringenberg will give personal attention to the work of each student. He is assisted by other members of the faculty in conducting the courses.

FEES AND EXPENSES

The matriculation fee of \$2.00 is payable when the student enrolls, and is not required when a second or other courses are taken. The tuition fee is \$3.50 per semester hour and is payable when the student enrolls for a particular course. In clubs of six or more, tuition is \$2.50 per semester hour. The cost for books and other materials is variable but in Bible courses is never high. Postage for return of manuscripts is to be paid by the student.

INSTRUCTIONS FOR REGISTRATION

Application for enrollment will be received at any time. The procedure for enrolling is as follows:

1. Fill in the application form in back of catalog answering all questions fully, except 14 to 18.
2. Mail the application with the \$2.00 matriculation fee and half or more of the tuition fee to the Director of the School of Correspondence.
3. When your application is received and approved the Syllabus of Study for the particular course to be taken will be mailed and you may begin work. (If application is not approved, the remittance will be refunded in full.)
4. When the course is half completed, the remainder of the tuition is due.
5. After you have enrolled in a course let nothing hinder you. Correspondence work calls for "stickers." But God's work can use nothing less. The individual who has character to enroll, continue, and complete a course reveals something of what it takes to do the important work which Christ has assigned to the Church.

School Regulations

Changing Courses—A change in subjects may be made by the Dean during the first three weeks of any semester, but after that, only by action to a penalty of two per cent deduction for a week's work or proportionately from his final grade in that subject.

Transcript of Credits—At the close of the second semester the Institute will supply the student with a copy of the credits earned during that school year. A graduate is given a complete record of his credits. A charge of \$1.00 is made for subsequent transcripts of more than one year's work; \$.50, for a year or less.

Class Absence—Students are to be present for each class session unless given an excuse. An unexcused absence is penalized by a grade of zero for that day's work. Three tardies count as one absence. All work missed through absence must be made up. A student who absents himself more than once for each semester hour in a given course shall be subject to a penalty of two per cent deduction from his final grade for each week of absence.

Social Life

Since most students are in residence, the Institute must of necessity govern the social life in order to preserve the true function of the school. The Bible Institute exists for the sole purpose of providing a thorough Bible education for serious-minded young people training for the service of Christ. It is not the place for frivolous, unconsecrated youth who do not have a high spiritual objective in life. Conscientious work and intensive concentration are necessary if studies are to be mastered. Accordingly, social affairs are regarded as decidedly secondary in importance during student days.

Students should not expect the same freedom in social matters that they would enjoy at home. Rules and practices of conduct are formulated for the welfare of the students as a whole. Certain hours are set aside for study during which visiting in one another's rooms is prohibited. Loud and boisterous conduct is always considered out of place. The Institute reserves the right to request withdrawal on the part of any student who manifests an inability or disinclination to conform to rules or who is not reasonably faithful in his work.

Co-education in the Institute is meant to promote wholesome relationships and Christian refinement. Education and correct manners go hand in hand. Opportunities are provided for cultivating and enriching the social life in an atmosphere of refinement and spirituality. Apart from the ordinary associations of dormitory life there are events in which the entire school participates—occasional receptions, outings, and special services.

Household Regulations

Reservations—In order to secure the reservation of a room, each applicant after receiving a letter of acceptance, should make a deposit of \$2.00. No room will be reserved until this deposit has been received. This fee is considered an advance payment that is credited to the student's account when he enrolls but it is not subject to refund.

Conduct—In an institution of this kind the regulation of conduct becomes necessary for the welfare of the group and the proper safeguard of the student. For this purpose a set of rules and regulations has been formulated to which the student is expected to conform. The desire of the Institute is to provide an atmosphere most conducive to reverent study and development of strong Christian character. The regulation of behavior is directed toward this end.

Dress—The wardrobe of each student should be made up of suitable and servicable clothing. We insist on the New Testament standard of modesty in apparel. Dresses that are abbreviated to the extent of immodesty will not be permitted. There will be no occasion for wearing formal or ultra-fashionable clothing. **Rubber heels are required.**

Equipment—Rooms are furnished with bedsteads, tables, chairs, and dressers; but students furnish rugs, window curtains, dresser and table scarfs, pictures, and any other articles they may desire to make the room homelike. Radio sets with loud speakers are not permitted.

Each dormitory student is expected to bring a pair of blankets, comforter, bedspread, pillow, change of sheets, pillow slips, towels, and three napkins, all plainly marked on the right side with the owner's full name in indelible ink. Payson's ink is recommended.

Textbooks and supplies are carried in the bookroom, and are sold at economical rates. Bibles are handled at reduced prices.

Care of Rooms—Each student is responsible for the cleanliness and tidiness of his room. In addition to regularly cleaning his room he is expected to give it a thorough cleaning in the spring at the time designated by the Hostess.

Health—It is recognized that the most efficient student is the one who is healthy. Recreation periods, distinct from study periods, are provided; and each student is required to spend at least one period in the open air each day. The Institute is situated in a beautiful, shady campus equipped with some athletic apparatus.

All cases of illness are to be reported promptly to the Hostesses or the Dean. The Institute provides care for those who may have minor illnesses. However, it cannot assume the cost of medical assistance secured outside of the school. A small fee is charged for each tray.

Expenses

BOARDING RATES

All single students from outside the city of Fort Wayne must room in the dormitory, unless permission is granted by the officers of the Institute.

| | |
|--------------------------------|---|
| Board and Laundry | \$3.50 per week or \$63.00 per semester |
| Room (double) per person | 1.25 per week or 20.00 per semester |

These very reasonable rates, which are below cost, are made possible, in part, by the co-operative plan of student assistance. Every boarding student works about one hour each day in the housework of the Institute. If a student wishes to be exempt from the hour of work, the cost of board and room is \$20.00 per semester higher.

Laundry includes sheets, pillow slips, towels, napkins and a limited amount of personal clothing.

When the dormitories are not crowded, single rooms may be had by paying fifty cents extra per week.

Students remaining for the Christmas vacation will be charged for a week and a half at the regular rate of \$4.75.

No deductions of board expenses will be made on absences of less than a week.

In case of an increase in the price of food products, the Institute reserves the right to raise the price of board proportionately at the beginning of each semester.

TUITION FEES

Tuition charges are made when a person enrolls as a student. Anyone is welcome merely to attend class lectures.

| | |
|--|----------------------|
| Registration Fee | \$ 1.00 per semester |
| Library Fee | 1.00 per semester |
| Tuition for one hour per week | 2.50 per semester |
| Tuition in School of Bible for 14 to 17 hours of class-room instruction per week | 34.00 per semester |
| Private music lessons in voice or piano (16 lessons) | 15.00 per semester |
| Private music lessons (16 lessons) | 15.00 per semester |
| Private organ lessons (16 lessons) | 19.00 per semester |
| Practice charge for use of organ four hours per week.... | 5.00 per semester |

A charge of \$2.50 per semester hour is made if a student carries more than 17 hours per week. (18 is the maximum, unless waived by action of the faculty.)

A fee of \$2.00 is charged for late registrations.

After the days of registration a fee of 50c is charged for any change in enrollment except where such change is made necessary by action of

the school. A charge of \$1.00 is made for a major change in the financial agreement.

No deduction is made in the tuition of a subject for which credit is given.

In private music lessons no refunds are made for brief periods of illness. Music instructors will be glad to make up such lessons if students will go to the instructor to make arrangements.

A charge of \$2.00 is made for diplomas.

Seniors who are in arrears can graduate only if approval is given by the Committee on Administration to make deferred payments. When such an arrangement is made, diplomas are held in the custody of the Institute and no credits are issued until the account is paid up in full.

TOTAL EXPENSES

For boarding students enrolled in the School of Bible:

| | |
|-------------------------|----------------------|
| Registration fee | \$ 1.00 per semester |
| Library fee | 1.00 per semester |
| Tuition | 34.00 per semester |
| Board and laundry | 63.00 per semester |
| Room | 20.00 per semester |

Total\$119.00 per semester

(A deduction of \$2.50 is made if paid in advance.)

For boarding students in the School of Music:

| | |
|--|------------------------------|
| Registration fee | \$ 1.00 per semester |
| Library fee | 1.00 per semester |
| Private lessons (two per week in voice or piano) | 30.00 per semester |
| Board and laundry | 63.00 per semester |
| Room | 20.00 per semester |
| Tuition | 25.00 per semester |
| Charges for use of piano | \$8.00 to 12.00 per semester |

Total \$148.00 to \$152.00

(A deduction of \$3.00 is made if paid in advance.)

Tuition is to be paid at the opening of each semester; board and room monthly in advance, unless satisfactory arrangements can be made with the Committee on Administration.

Non-boarding students pay the same fees as listed above, except those for board, room, and laundry.

SELF-HELP

The Institute is seeking to assist students who find it necessary to do work to help meet their expenses while in training by holding as many classes in the forenoon as possible, thus permitting students to work in the city during the afternoon. Some have earned a considerable part of their expenses in this way. However, those who must devote considerable time to secular work will find it necessary to extend their courses over a longer period of time.

For girls who are unable to live in the dormitory there are homes available in the community where they may work in exchange for room and board. Girls given homes are asked to come on the day before Registration Day in order to receive their assignments.

There is an opportunity for a limited number of students to pay for part of their expenses by assisting in the housework of the Institute. Those who desire such assistance should communicate with the Registrar as early as possible.

In order to reserve a home or self-help in the Institute, a fee of \$2.00 is charged. No reservation becomes effective until this deposit is made. It is considered an advance payment that will be credited to the student's account when he enrolls, but it is not refunded in case of forfeiture.

Information

Address correspondence to: Bible Institute, Fort Wayne, Indiana.

Inquiries are cheerfully answered. We want interested persons to fully familiarize themselves with the Institute and its educational offerings.

Free literature is sent to any one upon request, including:

- Catalog,

- Illustrated folder giving exterior views and pictures of faculty personnel,

- Scenic post card of the Institute buildings.

Visitors are always welcome.

Fort Wayne is on United States Highways 30, 27, 24. The Pennsylvania, Wabash, and Nickel Plate main lines go through the city.

The Bible Institute is in the southwest part of Fort Wayne on Rudisill Boulevard between South Wayne and Indiana Avenues. The South Wayne street car line has a stop at the school.

Special Speakers

1938-39

Rev. Clyde Meredith, Holland, Michigan
Rev. and Mrs. D. C. Rupp, French West Africa
Rev. H. W. Franklin, Grabill, Indiana
Dr. Paul S. Rees, Minneapolis, Minn.
Miss Julia Hodge, Philippine Islands
Rev. E. M. Anderson, Milwaukee, Wis.
Rev. A. P. Bournes, Fort Wayne, Ind.
Rev. and Mrs. Ray Clark, Peru, South America
Rev. Russel Sloat, Nigeria, Africa
Mr. Oscar Lord, Jamaica, B. W. I.
Rev. Olen Schlatter, India
Miss Salome Schug, Berne, Indiana
Messrs. Kenneth and David Rupp, Jr., French West Africa
Rev. W. C. McIntire, Wilmore, Ky.
Rev. J. H. Woodward, Boone, Iowa
Mrs. Calvin Snyder, China
Miss Edith Byerle, China
Rev. Forest Kuhn, Detroit, Michigan
Rev. V. C. Kelford, Waterloo, Iowa
Dr. Nathan Cohen Beskin, California
Rev. J. F. Gerig, Cleveland, Ohio
Mr. Kenneth Geiger, Bristol, Indiana
Rev. George Stoddard, French West Africa
Miss Edna Pape, French West Africa
Rev. E. J. Bulgin, Los Angeles, Calif.
Mrs. Barbara Cox, India
Mr. and Mrs. William Dillon, Fort Wayne, Indiana
Miss Marjorie Burt, Bethany, Ky.
Rev. Reno Tacoma, Fort Wayne, Indiana
Miss Minnie Hilty, China
Rev. C. W. Tozer, Chicago, Illinois
Dr. Harold Mason, Huntington, Indiana
Dr. J. W. Montgomery, Fort Wayne, Indiana
Rev. Paul Allen, Persia and Palestine
Chief White Feather, New York City.
Mrs. Fred Joder, French West Africa
Miss Nellie Thum, Missionary Candidate to the Orient.
Dr. John Greenfield, Daytona Beach, Florida
Rev. Harvey Mitchell, Grabill, Indiana
Rev. Joseph H. Smith, Redlands, California
Dr. H. C. Morrison, Wilmore, Ky.

APPLICATION FORM

The Fort Wayne Bible Institute

Date....., 19.....

1. Name in full
2. Address, Street
City State
3. Age Date of birth
4. Race Nationality
5. Are you single, married, or divorced?
6. If married, have you any children?
Number and ages
.....
7. How much education have you had?
.....
8. Are you a Christian? On what ground do you
base your claim?
9. How long have you been converted?
10. If you are a member of any church, state denomination
.....
11. In what course are you interested?
12. If you have been engaged in any Christian work, state
what, where, and how long
.....
13. What is your present occupation?

14. Are you able to meet expenses while in school?
If not, to what extent?
15. Have you ever suffered from serious ill health?
If so, what was the nature of your ailment?
16. What is the state of your health now?
17. When do you expect to enter the school?
18. Are you willing to submit to the rules and regulations of
this school?
19. Give the names, addresses, and positions of at least two
reliable persons to whom reference may be made.
Name
Address
Position
Name
Address
Position
20. Remarks
.....
.....
.....
.....
.....
.....
.....
.....
.....

Address applications to the Dean, Bible Institute, Fort Wayne, Indiana.

You will be notified as soon as your application has been duly considered.

(Printed in United States of America)

