

Taylor University

Pillars at Taylor University

TUFW Alumni Publications

Publications for TUFW and Predecessors

2-1-1986

Pulse/Lifelines

Fort Wayne Bible College

Follow this and additional works at: <https://pillars.taylor.edu/tufw-alumni-publications>



Part of the [Higher Education Commons](#)

Recommended Citation

Fort Wayne Bible College, "Pulse/Lifelines" (1986). *TUFW Alumni Publications*. 77.
<https://pillars.taylor.edu/tufw-alumni-publications/77>

This Book is brought to you for free and open access by the Publications for TUFW and Predecessors at Pillars at Taylor University. It has been accepted for inclusion in TUFW Alumni Publications by an authorized administrator of Pillars at Taylor University. For more information, please contact pillars@taylor.edu.

Pulse Lifelines

FORT WAYNE BIBLE COLLEGE ■ FEBRUARY 1986



All-American FWBC soccer student Graham West.

FWBC SOCCER: TEAM PLACED 4TH NATIONALLY, STUDENT SETS NATIONAL RECORD

*Edited with permission from Creative Sports magazine
Written by Dan Lambert*

This team could be from any school. They could be just another soccer team, but they're different. As each member draws close to the center of the huddle to join his hands with his teammates, the team collectively takes a deep breath and yells "To the glory of God!" Only then are they ready to play.

These are the Falcons of Fort Wayne Bible College. Their six-year history is one filled with success on the field. That success, however, is not the most important factor for this team.

As a team of soccer players from a Bible college, they represent more than just their school or themselves. They represent Jesus Christ. Denny Williams, the only coach the soccer team has ever had in six years, has made a Bible verse

continue to page 11

BINKLEY APPOINTED NEW WBCL MANAGER

by Debbie Carter

Five-thirty a.m.: Her day has already begun at the office. She is already engrossed in outlining daily schedules, responding to mail, charting the future for Fort Wayne's largest Christian radio station. "My best think-time is from six to eight a.m.," explains Mrs. Char Binkley, the new general manager of Fort Wayne Bible College's radio station, WBCL.

Char was unanimously recommended for appointment by the WBCL Search Committee on November 15, 1985, after consideration of 27 qualified applicants. Evaluation criteria for the position included radio and management training and experience, promotional philosophy and experience, interpersonal skills, spiritual vitality, and future outlook and plans for station growth and enhancing the WBCL/FWBC relationship.

"I see myself as the coach of a team — I don't see myself as 'The Boss'. It's my job to help people identify their gifts and abilities, and maximize them in the ministry here."

Successfully meeting those criteria is not a challenge to be accepted with a lax attitude. But, Char has wholeheartedly devoted herself to the growth and success of WBCL since 1976. A 1965 graduate of FWBC, she taught first grade in Fort Wayne for six years, but always had a desire to work for her alma mater. In 1973, Binkley returned to FWBC as Assistant to President Timothy Warner and freshman psychology professor. Her responsibilities as Assistant to the President, which included coordinating events to attract and involve the com-



munity with the College and keeping the College in touch with Fort Wayne citizens and leaders, gave her valuable experience in communicating with the public and Bible College constituencies.

Three years later, she began planning, coordinating, and hosting a talkshow on WBCL targeted at women in the home. She did all this while continuing to serve as presidential assistant and professor. The program, called "Spectrum for the Homemaker", immediately received a positive response, reaching not only homemakers but many men and women at work as well. To more appropriately address this wide audience, the program was soon renamed "Midmorning". Several months after the first "Spectrum for the Homemaker" was aired, Char came to work for WBCL full-time, leaving her other responsibilities at the College. Since then, she has used her zest for life and commitment to reaching others

continue to page 6

People Reaching to People: SHARATHON RAISES NEARLY \$1 MILLION

by Char Binkley

"O Lord my God, many and many a time you have done great miracles for us and we are ever in your thoughts. Who else can do such glorious things? No one else can be compared with you. There isn't time to tell of all your wonderful deeds." Psalms 40:5.

The words of the psalmist well up in my heart when I consider miracle after miracle that we witnessed in the 10th Anniversary/Link To The Future SHARATHON. In addition to raising the 1986 operating budget, the five-day event (January 20-24) was also the official kick-off of the "LINK TO THE FUTUR" building campaign. As in past SHARATHONS, the faithfulness of God was overwhelmingly expressed through the generosity of listeners, and we did reach the operating budget goal of \$349,376. Additional faith promises of \$600,090 are specifically designated for the new station facility scheduled for completion in 1987. The total number of dollars pledged during the 1986 SHARATHON was \$949,466. We give God the glory for giving us such an exciting and blessing-filled week!

Many of you have asked me what it takes to ensure a successful SHARATHON. What are the keys from the manager's perspective?

The first key is PEOPLE. This year, we had over 300 volunteers to answer phones, tabulate pledges, operate computers, coordinate mailings, and run countless errands. We were delighted to welcome back Wayne Pederson, host of "Footprints" and "Discoveries", as guest anchor, in addition to the many other friends, new and old, from the WBCL listening area. In addition to their regular responsibilities, the WBCL staff members worked many hours preparing for SHARATHON to make sure everything ran smoothly. Over six thousand faithful listeners made faith promises. People reaching to people: that's what SHARATHON is all about.

The second key to a successful SHARATHON is PRAISE. We at WBCL look at

this week as a time to focus our attention on the sufficiency and purpose of God in our personal lives, as well as in the ministry because the Good News of His love came first to us. In this, we all have much for which to praise Him!

The third key ingredient is PRAYER. The entire WBCL staff, volunteers, faculty, staff, students, and alumni of Fort Wayne Bible College, and thousands of faithful listeners committed themselves to praying for the many aspects of the week. Without the prayers of all God's people, SHARATHON wouldn't be possible.

We Broadcast Christ's Love is more than a convenient way to remember our call letters — it's the reason we exist.

And this leads naturally into the fourth key: PARTNERSHIP. This is really the key to all the rest because it's our partnership with you, as believers in the body of Christ, that makes WBCL's message a life-changing one. **We Broadcast Christ's Love** is more than a convenient way to remember our call letters — it's the reason we exist.

Editor's Note: WBCL is licensed and governed by Fort Wayne Bible College. At 90.3 on the FM band, WBCL's 50,000 watt, twenty-four hour a



SHARATHON volunteers take incoming calls.

day signal covers approximately a 90 mile radius around Fort Wayne. Since it began broadcasting in 1976, WBCL has grown from a staff of three full-time and four part-time employees to twelve full-time and six part-time employees.

WBCL is responsible for supporting all costs related to the station and its operation. These funds are raised each year through SHARATHON, an annual, three-day event in January that has always been enthusiastically received and supported by the public.

FWBC LIBRARY RECEIVES NEW COMPUTER FILING SYSTEM

Fort Wayne Bible College is one of 28 Indiana private colleges and theological seminaries that will greatly expand library services to their students, faculty, and other libraries.

During the next three years, Fort Wayne Bible College will benefit from a cooperative cost-sharing effort to enter approximately 1.7 million pre-1977 catalog records of the libraries of these schools into a nationally shared computer system. The completed project will make it possible for library patrons to locate, and then borrow on interlibrary loan, materials from any of these collections.

This ambitious project is being undertaken by the Indiana Cooperative Library Services Authority (INCOLSA). The effort is funded by grants that total more than \$1 million from the Lilly Endowment, Inc., an Indianapolis based private philanthropy.

Larry Frye, Head Librarian at Wabash College at Crawfordsville, Indiana, and chairman of the project steering committee says, "Completion of this project will significantly improve delivery of library materials and services to faculty and students throughout the state, among the general reading public in Indiana, and, indeed, library users throughout the nation."

Included in these holdings are items unique in Indiana and scarce nationally. Completion of this project is basic to any future local automation of library functions for any of these institutions. Through INCOLSA, they will be able to participate in a statewide resource sharing network which provides an on-line computer catalog of the holdings of libraries in the state with support circulation services for every library user.



AS I SEE IT

by Harvey R. Bostrom

FWBC has a special dynamic to it. Recently, two or three visitors to our campus have remarked that a person doesn't have to be on our campus more than 30 minutes before he or she senses a kind of charged atmosphere — charged in the sense that this is not an ordinary school. In the hallways, people are serious but not somber, friendly but not frivolous. Faculty, staff, and students engage in spontaneous rapport. They seem to reflect an excitement that comes from a sense of being about the Master's business. They are fully human, equally vulnerable to all the temptations, frustrations, and complexities that life presents to all mankind. The difference is they have made a conscious commitment to be on their way to a life of effective service for our Lord. There is a sense of anticipation not only of the solutions to their present pressures, but also of the details of God's will for their lives as He leads them day by day.

The dynamic will affect the end product: Men and women will be making a difference in this world: "Preaching liberty to the captives . . ." (Luke 4:18).

FWBC is someplace different!

ATTENTION!

1985 Alumni who have not received the 1985 VINE Yearbook: Please send us your address so we can mail it to you.

Name _____

Address _____

Mail to: The VINE, Fort Wayne Bible College, 1025 W. Rudisill Blvd., Fort Wayne, IN 46807

FIELDMEN BRING 'WORKERS UNTO THE HARVEST'

by Debbie J. Carter

Their days are long. Evenings are regularly a busy time, too, since these are the hours when they can reach most people at home. "Who?" you ask. Ministers? Well, no, not exactly. Salesmen? Not in the true sense of the word. Who? And what do they do?

"Our primary job is not to ask for or collect money. It is to cultivate a spiritual, supportive, prayerful relationship between community members and Fort Wayne Bible College," explains Mr. Joe Updegrove, one of the field representatives for Fort Wayne Bible College. He

"Perhaps the most gratifying part of being a Harvester or Ambassador is knowing you are contributing to a Christian education for a young person in today's contemporary world."

and Mr. Frank Watson, Fort Wayne Bible College's other representative, note that while their primary activity is to search for and call on community members and friends of Fort Wayne Bible College, their goal is not simply to obtain financial support for the College. They are seeking those who desire to become an active part of the Bible College team and who are interested in supporting students as they prepare themselves for the Lord's service.

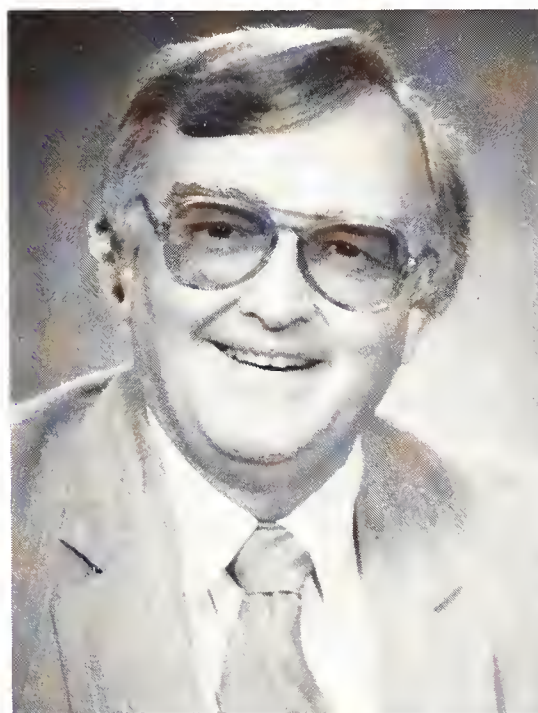
Covering all of Indiana, Ohio, Illinois, Michigan, and specific areas in other



FWBC field representative Joe Updegrove, right, talks with Ambassador Corps member, Gale Nidlinger, left.

states, these two men are responsible for enrolling people in one of the College's two donor clubs, the Harvesters Club or the Ambassador Corps. "Becoming a member of either the Harvesters Club or Ambassador Corps is an action that is mutually beneficial to the new member and the College," says Updegrove. "The College gains from the interest, commitment, and financial support that is pledged upon enrolling in one of the clubs. The new member becomes an active and welcome part of the Bible College family, to be included in the weekly devotions of our faculty and staff, to maintain a regular correspondence with our President, and to participate in special social functions sponsored by the College. Perhaps the most gratifying part of being a Harvester or Ambassador is knowing you are contributing to a Christian education for a

continue to page 5



FWBC representative Frank Watson.

FWBC DRAMA GROUP
SOMETHING TO SEE!

by Joy Gerig

The responses have been quiet awe, tears, laughter, applause, commitment, and always — appreciation for ministry. "There was an achievement of naturalness in all the performances in drama and song — so much so that I found myself identifying with the portrayals." This is the latest in the continuing affirmations that are being received regarding the weekly ministry of HIS Company, Fort Wayne Bible College's Christian Service drama troupe. The troupe travels under the direction of Miss Sonja Strahm, Asst. Professor of English, Art, and Christian Drama. Through vocal solos and dramalogues in "Master Meeting", their first semester program, the five students portrayed Nicodemus, the woman of ill-repute, Peter, Mary (Martha's sister), Thomas, and the mother of James and John in specific, life-changing meetings with the Master.

HIS Company has added the play, "In Spite Of" to their repertoire second semester. The plot, based on the book of James, focuses on the tragedy that can occur when the tongue is not controlled by God's Spirit.

The troupe is completely scheduled for the entire college year. If you have opportunity, attend a presentation in your area. You will discover, as did a pastor who recently hosted them, that "They came to minister and they DID minister to us." Their second semester schedule follows:

| | | |
|-----------------|---|------|
| February | | |
| 2 | Union Chapel Church Bryant, IN | a.m. |
| 2 | Aboite Missionary Church Fort Wayne, IN | p.m. |
| 16 | East Gilead Missionary Church Bronson, MI | a.m. |
| 16 | Ypsilanti Free Methodist Church Ypsilanti, MI | p.m. |
| 22 | Sheep's Gate Huntington, IN | p.m. |
| 23 | Highland Bethel Evangelical Mennonite Church Fort Wayne, IN | a.m. |
| 23 | St. John Mennonite Church Pandora, OH | p.m. |
| 28 | Fort Wayne Bible College Chapel Fort Wayne, IN | a.m. |
| March | | |
| 2 | West Missionary Church Beme, IN | a.m. |
| 2 | Hope Missionary Church Bluffton, IN | p.m. |
| 23 | Pandora Missionary Church Pandora, OH | p.m. |
| 27 | Trinity Friends Church Van Wert, OH | p.m. |



HIS COMPANY '85-86 Members are from left to right:
Sitting — Joyce Klay, Marc Siler
Standing — Al Peck, Patty Owens, Eric Vincent

| | | | | | |
|----------------------|---|------|--------------|--|------|
| March (cont.) | | | April | | |
| 28 | Windham Bible Church Windham, OH | p.m. | 27 | Chapel Hill Missionary Church Union, MI | a.m. |
| 30 | West Loop Missionary Church Holidaysburg, PA | a.m. | 27 | United Methodist Marshall, MI | p.m. |

FWBC HOSTS
PASTORS,
BUSINESS
LUNCHEONS

by Harvey R. Bostrom

For some time now, we have invited to our campus Fort Wayne community leaders for the purpose of acquainting them with the 1986 model of Fort Wayne Bible College. The format is a simple luncheon held in our Board Room on the third floor of Witmer Hall. The average group numbers five or six. I host the meeting and introduce a couple of Bible College administrative staff, or faculty as the case might be.

"Without exception, our guests are absolutely amazed at what they discover . . ."

During this time of getting mutually acquainted, I give an informal overview of the school — its history, current programs, and long standing contributions we have made to the city through our Christian Service programs. Without exception, our guests are absolutely amazed at what they discover and leave congratulating us and offering to be of

Mark Your Calendar

| | | |
|-----------------|--|-----------|
| February | | |
| 7 | Special Events: JOSH MCDOWELL | 8 p.m. |
| 28 | Pops N' Pizza | 6:30 p.m. |
| March | | |
| 1 | Pops N' Pizza | 8 p.m. |
| 2 | Senior Recital: Mark Pyles | 3 p.m. |
| 4 | General Student Recital | 8 p.m. |
| 18 | Joint Recital: Russ Iida & Dann Zehr | 8 p.m. |
| 21 | Chorale Home Concert | 8 p.m. |
| 23 | Senior Recital: Terry Sordelet | 3 p.m. |
| 19 | Special Events: KEN MEDEMA | 8 p.m. |
| April | | |
| 20 | Senior Recital: Kevin March | 3 p.m. |
| 24, 26 | Spring Musical | 8 p.m. |
| 25 | Friends of FWBC Housewalk | All day |
| 29 | General Student Recital & Reception | 8 p.m. |
| May | | |
| 2, 3 | Spring Festival (Concert Band/Choral Union) | 8 p.m. |

support to us in any way they can.

There are two patterns of luncheons — one devoted to the interests and needs of pastors and the other to leaders of business and industry.

We continue to be amazed that, although we have been here for more than 30 years, very few have any idea about who we are and what we are all about.

We are excited about changing that situation as we continue to acquaint more Fort Wayne pastors and community leaders with the college.

Fieldmen cont. from page 3

young person in today's contemporary world." There are currently 888 Harvesters Club members and 163 Ambassador Corps members.

What other roles do these two men play besides enlists? Theirs is a combined role of ministry, salesmanship, financial advising, and friend. They devote considerable time to visiting with prospective students and parents of current FWBC students. "As ambassadors of the College, we listen to your concerns about any part of Fort Wayne Bible College, and do our best to see that they are communicated and acted upon," says Frank. "As ambassadors of God, we try to provide the support for your personal concerns and praises that God has asked us to provide."

Joe came to Fort Wayne Bible College in July, 1975, after learning about the College from fellow missionaries while serving a four-year missionary term in Sierra Leone, West Africa. His prior experience as a salesman and real estate agent have been valuable tools in communicating the ministry of Fort Wayne Bible College and the benefits of club membership.

Frank has been a field representative for the College since 1982, after owning and managing a private business here in Fort Wayne.

Both view their jobs as a special calling from God — to contribute to providing a Christian education for today's young people while ministering to and helping others as they pursue their service to the Lord.

SPRING
HOUSEWALK 1986

by Naomi Bostrom

It isn't too soon to mark April 25 on your calendar for our fifth annual Spring Housewalk. Once again, five different homes will be opened to you. Each one has been chosen because of some unique feature. Come and enjoy a great day and feel free to bring your spouse. In fact, how about getting together a carload of friends! A tasty lunch will be included as well as a brief, interesting program. Our boutique will offer delightful crafts, delicious baked goods, and decorative plants.

The proceeds from the Housewalk will go towards a major facelift for the private dining room of the College. Plans are already underway to recarpet, paint, paper, redecorate the windows, and purchase new furniture — a big undertaking!

The tickets will still be only \$7.00. They may be obtained at Fort Wayne Christian bookstores after March 25, or you may send your check and a self-addressed, stamped envelope to Friends of FWBC Housewalk, 1025 West Rudisill Blvd., Fort Wayne, Indiana, 46807. Come and enjoy the day with us.

Friends of FWBC is also building a scholarship fund for students. See the coupon below. These donations of \$5 or more are tax-deductible. Become a member of the organization, Friends of FWBC, and help support students and the College.

FACULTY
NEWS

The Fort Wayne Bible College faculty is in demand to write in professional and popular publications and to lecture at professional conventions and at community affairs. A small sampling of these includes:

DR. FRED VAN DYKE — Presenter at the Hoosier Association of Science Teachers (HAST) and accepted for publication "The Search for Cougars in the United States." Dr. Van Dyke has published numerous other articles in the past year.

DEAN SHARON MEJEUR — Presenter at the Great Lakes District for Christians in Student Development conference.

PROF. DOUG BARCALOW — Presenter at the Association of Christian Continuing Education Schools and Seminaries conference. Topic: "Looking Backwards: The Roots of Continuing Education".

DR. ALICE JOY WEDDLE — Presenter of three workshops at the Association of Christian Schools International (ACSI). Published a history of Fort Wayne Bible College in *The Sunday School Times*.

PROF. STAN NUSSBAUM — Published a missions article in the *Evangelical Mennonite Quarterly*.

In addition, Grant Osborne (alumnus) took third place in the topical books division of *Eternity* magazine's "Book of the Year" awards for his book, *The Resurrection Narratives*, (Baker, \$11.95).

_____ Yes, I would like to be a participant in the 1985-86 Friends of FWBC. Enclosed you will find:

_____ \$5 _____ \$10 _____ \$25 _____ \$150 (full scholarship) \$_____ for Friends Scholarship Fund.

_____ I am interested in becoming a Prayer Partner.

NAME (Head of Household) _____

ADDRESS _____

CITY/STATE/ZIP _____

PHONE _____

*Donations are tax exempt.

*Checks are payable to Friends of FWBC.

Mail to Fort Wayne Bible College
1025 W. Rudisill Blvd.
Ft. Wayne, Indiana 46807

PHONATHON 1986

March 10, 11, 12, 13 and March 17, 18, 19, 20.

Can you help?

FWBC alumni needed each of these nights to work, pledge, pray.

We're counting on you!

Alumni Relations Office, Fort Wayne Bible College, (219) 456-2111.

Binkley cont. from page 1

through Christ to create and host two other programs, "Kid's Kaleidoscope", a Saturday morning children's program, and "What's Cookin'", a daily recipe program. Under her direction, "Mid-morning" has become WBCL's most listened to local program.

What are her responsibilities as manager and what is her vision for the future of WBCL?

"I see myself as the coach of a team — I don't see myself as 'The Boss'," explains Char. "It's my job to help people identify their gifts and abilities, and maximize them in the ministry here." WBCL currently has 12 full-time employees and six part-timers. "Interacting with the staff and nurturing them is the most exciting part of the management job to me." She reserves one day each week to meet with each of the staff members on an individual basis for a time of prayer and sharing of their personal and professional hopes and aspirations. Her most challenging job as manager is making sure each staff member views himself or herself as a valuable part of the team. "It's easy, in media, for the people who are in the spotlight, or in this case, behind the microphone, to get all the glory for what goes on, and yet they couldn't do it if it weren't for those people who are just as valuable a part of the ministry."

In addition to her regular responsibilities as station manager, she has personally taken charge of the fundraising efforts for the \$533,000 building campaign.

That attitude carries over into her personal life also. She proudly credits her family for their contributions to her success as a professional woman. Husband Steve is a family and personal counselor at Markle Medical Center. Their daughter, Angela, is a senior at FWBC and son, Andrew, is a senior at Norwell High School. All of them fully support her in the time and energy that her job requires, and each makes extra efforts to ensure they maintain and enjoy "family time".

Char also spends a great deal of time making policy decisions and keeping the station in good standing with government rules and regulations. She is a member of the FWBC President's Cabinet and meets weekly with President Bostrom and other Cabinet members to discuss ways to help link the College and the station and coordinate and enhance each other's goals.

She enjoys working with the WBCL staff in dreaming up new ideas for new programs. She currently uses a brainstorming procedure for generating new program concepts called the CAN Idea. Through her Creative And New Idea program, staff members submit monthly new ideas that could be used to enrich and enhance the ministry of WBCL. The ideas are then evaluated by Char, Lynne Ford, WBCL's Director of Creative Programming, and one other rotating staff member. This committee then selects and implements one idea per month. "This plan provides growth opportunities for the station and helps the staff feel ownership of the station, which is important for motivation and morale," she explains.

Her most challenging job as manager is making sure each staff member views himself or herself as a valuable part of the team.

Char's goals for WBCL in the next two years clearly reflect her commitment of service to the Lord and her desire to reach out and touch more people through the ministry of WBCL. The most forefront goal is the completion of the new building to be shared between FWBC and WBCL. The new building will house greater broadcasting facilities and office space for WBCL and a new gymnasium for FWBC. Construction is scheduled for completion in 1987. Char has personally taken charge of the fundraising efforts for WBCL's portion of the costs, estimated at \$533,000. In addition to her regular responsibilities as station manager, she makes personal visits to potential contributors to the "Link to the Future" building campaign, "sel-

ling" the 10,000 plus bricks for the new building. The 1986 SHARATHON was the official kick-off of the \$533,000 campaign.

Her ministry goals include some special new programs focused at particular groups of people like children, men and single parents. She and other WBCL staff are currently involved in trying to syndicate "Kid's Kaleidoscope" so that it will be available nationally. She also envisions starting a children's choir of some of the best children's voices in the WBCL listening area. Plans for this include producing a record album using their voices as the voices heard on "Kid's Kaleidoscope", and then traveling throughout the Midwest with those children to promote the program and WBCL.

A "Day Away" seminar for men and weekend seminars for single parents are also among her aspirations for expanding WBCL's ministry. She would also like to do more local programming and live broadcasting, something that can be accomplished with larger facilities and more modern equipment.

Her intense concern for the well-being and growth of other people, her zest for life, her desire to challenge and help others grow are just a few of the things that drive Char Binkley. But where does she find the energy, optimism, and strength required to accomplish the monumental tasks she sets for herself and the growth of WBCL? The answer is obvious after hearing her on the radio or talking to her for just a few moments: "I can do all things through Him who strengthens me," she replies.



General Manager Char Binkley with Operations Manager Jeff Carlson preparing for "What's Cookin'".



From the Board of Governors
of Fort Wayne Bible College

*We are pleased to unveil the first comprehensive capital campaign
in the history of FWBC:*

A Bridge to the Future

"A Bridge to the Future" is more than just a capital campaign . . . it is crucial to a successful future for Fort Wayne Bible College. In the next few years, will FWBC thrive, or just survive? "A Bridge to the Future" can determine the answer. The success of this \$2.4 million campaign will spell the difference between mere existence and real health for the College.

Through the years, FWBC has been strong and effective in fulfilling its mission of preparing young men and women for service — literally across the nation and around the world. Alumni, friends, pastors, churches and business people have generously given to help FWBC become the strong institution with worldwide impact that it is today.

"Bridge to the Future" is an opportunity for FWBC to go beyond the past and increase our impact and service.

The "Bridge to the Future" campaign is being conducted in three district phases:

Phase I \$1,000,000 High-interest commercial debt elimination (completed)

Phase II \$ 500,000 Construction of an adequate permanent home for WBCL (completed)

Phase III \$950,000 Endowment of the new Activities Center

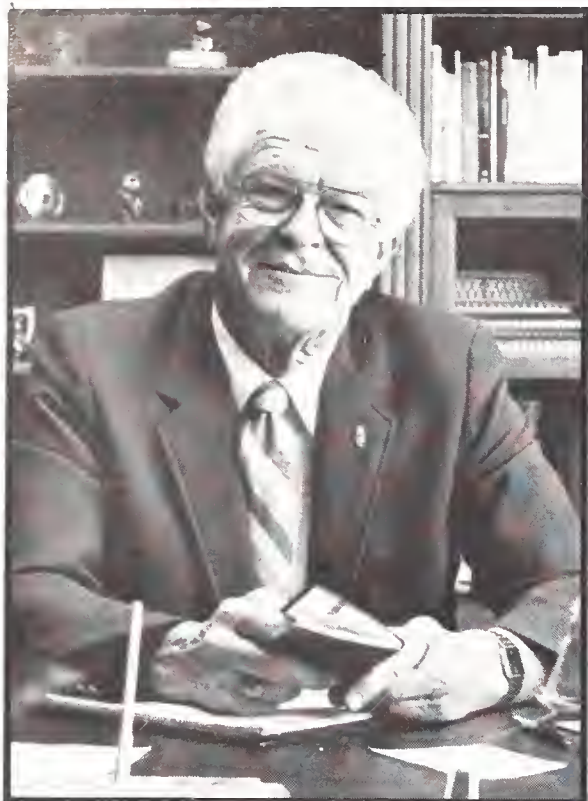
Phase I has already been completed. The Board of Governors, alumni, churches, and the College family have committed the entire \$1 million over the next three years to retire all of the high-interest, commercial debt.

This is an enormous step for the College, because this debt has hindered our operation and made further growth practically impossible.

Phase II will provide a new home for WBCL, a tremendous community asset. Through the overwhelming support of friends of WBCL, the 1986 SHARATHON/Link to the Future campaign successfully completed this phase of the campaign, raising over \$600,000 toward the new facility.

Phase III is the present challenge. This phase of the campaign will provide an all-new Activities Center which will give us a full-sized gymnasium/auditorium not only for the College but for many community and church events as well.

We urge you to join us in crossing this "Bridge to the Future". Become a part of the exciting things that are happening at FWBC right now!



A Personal Word from the President of Fort Wayne Bible College

Dear Friend,

After more than 80 years, FWBC finds itself at a crucial juncture in its history. We are about to cross a bridge into the future — and because of that, the importance of this capital campaign to the College can't be overstated.

We sense the excitement here on campus as we see Phases I and II already completed, and Phase III well underway. The elimination of high-interest debt (Phase I) is a wonderful milestone, for that debt has been severely hampering the operation of the College in recent years. I salute the Board of Governors, our alumni, churches, Harvesters Club and Ambassador Corps members, community friends, and the College family for their extremely generous response to Phase I.

I'm also personally delighted to see WBCL's prospects for moving into a new home. The station already makes a significant impact in the community, and the completion of Phase II will improve and increase that impact dramatically.

But today we are focusing on the great and final challenge of the campaign, the challenge that requires **your** commitment. I look forward to welcoming you as a dedicated participant in this exciting venture — the crossing of this crucial "Bridge to the Future".

Harvey R. Bostrom

FACTS ABOUT THE NEW ACTIVITIES CENTER

The Activities Center, a major multi-purpose facility, will be comprised of 41,000 square feet, including a new, larger gymnasium; seating for over 3,000 spectators; modern dressing, shower, and restroom facilities; excellent classroom areas; and office areas for supporting faculty and staff.

The gymnasium facility will develop the College's physical education effort. The new Activities Center will allow us to improve our intramural sports program, create exercise and fitness programs for faculty and staff, and more effectively provide for student social functions.

Perhaps most visible of all would be the opportunity to bring FWBC's varsity sports program to the campus for the more convenient enjoyment of the student body and the Fort Wayne community at large.

And, of course, the new building will also serve as a center for seminars, crusades, larger convocations and civic activities — something not possible with the limited space available in our present facilities. Founders Memorial Hall, where our physical education program currently operates, was built in the 1940s!

A WISE DECISION

The building will be constructed and owned by Fort Wayne business and community investors, then lease-purchased by FWBC. The Governing Board of FWBC has adopted an excellent policy requiring 90 percent of necessary funds to be pledged or received before any new building project is begun. So we need your help right away!

Then, when you give, here's what happens to your contribution: Our goal is to raise \$950,000 from alumni,

historic College friends, community friends, and business people.

In this way, the College will not assume any long-term indebtedness — a tremendous strength of this capital campaign.

Your contribution, made over the course of the next three years, will be a permanent investment, one that will keep on giving for years and years to come!



The new Activities Center will serve the entire Fort Wayne Community as a site for events of interest to the College, the churches of the region, and the public at large. It will be a place for people to get together!



We wish to express our sincere appreciation to the Board of Governors of Fort Wayne Bible College for their outstanding commitment of nearly \$1 million toward Phase I of the "Bridge to the Future" campaign, the elimination of the College's high-interest, commercial debt. Their extraordinary contribution will be felt for years to come.

*Standing, Left to Right:
Ray Clendenan, Frank Wenter, Tom Swank, Bob Julin, Harold Berk, Clyde Taylor, Harvey Bostrom, Jerry Boyers, Lawrence Whiteford, Don Gerig, Paul Robbins, Tillman Habegger*

*Seated, Left to Right:
Gale Rickner, Carl Muselman, Pat Byall, Leonard DeWitt, Paul Steiner, Foster Klopfenstein, Dale Ferrier.*

Not pictured: John Strubhar

Out of Our Unified Commitment...

As we stand together, the Fort Wayne community can accomplish Phase III and make a valuable, long-term contribution to life in Fort Wayne — and, in particular, to our students. Fort Wayne Bible College is producing students of whom the City of Fort Wayne can be proud . . . students of strong moral character, of wholesome and clean-cut appearance, students with a commitment to integrity — who believe in a day’s work for a day’s pay! These students are tomorrow’s America — our country’s best potential, our nation’s brightest hope. They are a light to our country and our world. Only time can measure their eternal impact. “A Bridge to the Future” is for them.

How can you help build this “Bridge to the Future”? Your options are many, including the following:

- Cash

Real Estate

Stocks & Bonds

Life Insurance
- Gifts in Kind

Memorial Gifts

Investors Agreements

Personal Property

And, of course, we will be happy to discuss other possibilities with you. We want everyone to have a part in taking this tremendous step! Every gift given toward our “Bridge to the Future” campaign is tax deductible. Pledges can be made over a three-year period and may be designated to a specific area of the campaign if you wish.

Here’s what it will take:

| Numberof gifts | Amount of gift | Total amount |
|----------------|----------------|------------------|
| 1 | \$150,000 | \$150,000 |
| 2 | \$100,000 | \$200,000 |
| 3 | \$ 50,000 | \$150,000 |
| 5 | \$ 25,000 | \$125,000 |
| 6 | \$ 15,000 | \$ 90,000 |
| 10 | \$ 10,000 | \$100,000 |
| 15 | \$ 5,000 | \$ 75,000 |
| 50 | \$ 1,000 | \$ 50,000 |
| many | varied amounts | \$ 10,000 |
| | | TOTAL: \$950,000 |

HERE’S WHAT TO DO

A campaign volunteer will be contacting you in the near future. Join with us in building a “Bridge to the Future”. We welcome your partnership in this important endeavor.

And, in the meantime, for a complete campaign brochure — or if you’d like to be a volunteer in our campaign — give us a call (219) 456-2111, ext. 249.



Graham West against Concordia opponents.

FWBC soccer cont. from page 1

the team's guiding light: "Whatever you do, do it all for the glory of God." I Corinthians 10:31 (NIV).

When Williams first came to FWBC in the fall of 1979 as Dean of Men and Married Students, there was no varsity soccer program. Some of the students had formed a soccer club a few years earlier. In August, 1980, the Falcons officially began competing in the National Christian College Athletic Association (NCCAA).

The team collectively takes a deep breath and yells "To the glory of God!" Only then are they ready to play.

In 1982, as the third season for FWBC soccer began, in came Graham West, currently a FWBC senior who has become one of the most prolific scorers in collegiate soccer history at any level.

West's career stats could make any athlete envious. From 1982-1985, West scored in 56 out of 65 games for a total of 120 goals in four years, which is an undisputed NCCAA record. Other honors for West include NCCAA All-Region 1983-85, NCCAA Division II First Team All-American 1984 and 1985, NCCAA scoring leader in 1984 and 1985, second leading scorer in 1983, and FWBC offensive player of the year 1982-85. At the NCCAA national finals in 1984 and 1985, Graham West was selected for All-Tournament Team.

West was introduced to soccer at the age of eight, when his family, who then lived in Canada, visited his grandparents, who lived in Australia. His grandfather was a goalie on Australia's World Cup soccer team and was a good teacher for West.

Many who have watched West play wonder why he chose Fort Wayne Bible College and didn't try for a scholarship at a larger school. "I wanted a school with soccer and Bible," he explains.

West says he believes playing soccer at a Bible college has a distinctively different flavor than playing at a secular school or even a Christian college. He and his teammates play all-out because they believe Christ would have played soccer that way.

West notes that it is not always easy to have that attitude. "It's tough to glorify God on the field sometimes," he says. West doesn't have any delusions that Christian soccer players are always better than others. "It's not like we're right and they're wrong." But he adds, "I do like to think we play harder for the right reasons."

Coach Williams looks for kids with an attitude similar to that of West's. Since FWBC offers no money or scholarships for its athletes, he wants a player who is coming to school because of his commitment to Jesus Christ. When he talks to potential students, his approach is, "If you're interested in serving Christ and you want an education that will prepare you to do that, and you want to compete

in a very competitive soccer program and grow as you do that, then Fort Wayne Bible College has something to offer you."

Graham West: "I do like to think we play harder for the right reasons."

Two other Falcon players have been given NCCAA Division II All-American status: Jim Hughes in 1984 and Jeff Caudill in 1985. Williams was NCCAA Midwest Region Coach of the Year in 1984 and has a six-year record of 58-39-2. The team has won the NCCAA Division II Midwest Regional Tournament and finished fourth in the national tournament each of the past two years.

But none of that success is important unless the glory goes to God.

DISTINGUISHED LECTURERS AT FORT WAYNE BIBLE COLLEGE

By Richard Dugan

An outstanding faculty is not enough! Supplementing the contributions of these people enriches the campus family and the community. This year the College has brought some outstanding guests to the campus.

The Program in World Missions brought Don Richardson, who is noted for his work in Irian Jaya, which was documented in the book and movie ***Peace Child***. A few months later, the program also brought Gregg Livingston from the U.S. Center for World Missions in California.

The Thomas Staley Foundation funded the annual Staley Distinguished Lectureship. The speaker was Dr. William Leslie of the LaSalle Street Church in Chicago. Bill has conducted an extensive urban ministry in that city. He communicates a strong concern for the church in American cities.



ALUMNI ACTION

by Bill Gerig

The Fort Wayne Bible College Alumni Association continues to seek ways to help alumni maintain contact with each other and with the College. We also are eager to find ways that the association can assist alumni in their ministries for the Lord.

As the new Alumni Director, I am committed to these two goals and desire to effectively represent the College to the alumni as well as to represent alumni concerns to the College. The Alumni Office secretary, Marceil Zehr. (g'52), and I stand ready to assist our 6,600 alumni as they serve the Lord here in the United States and other parts of the world.

Alumni Activities for the 1985-86 School Year

PAST

Soccer reunion on October 5, 1985. Fourteen soccer alums returned to campus to challenge this year's varsity soccer team. The varsity won the game 5 to 2. The 1986 reunion and game will be on October 4, 1986.

Volleyball reunion on September 7, 1985. Eight alumnae girls were on campus to have fellowship together and to defeat this year's varsity with best out of five. This is the first time the alumnae has ever defeated the varsity! Some of the alumnae were on last year's team.

Basketball reunion — At a breakfast on Saturday, November 9, 1985, fifty-five basketball alumni, their families, and this year's team had a great time of fellowship together. The varsity won in the last few seconds, 77 to 76.

PRESENT

Survey — We are in the process of completing a survey of all FWBC alumni to update our records. Please help us learn about your current activities by completing yours and returning it as soon as possible!

Double Your Dollar

That's right . . . You can literally double, and in some cases, triple the dollar value of your gift to Fort Wayne Bible College if you work for an organization that offers a matching gift program.

It's easy . . . Just enclose a matching gift form from your company with your next gift. Your company's matching gift coordinator (check with the personnel or community relations department) can provide you with these forms, as well as answer any questions you may have.

Check it out . . . Take advantage of this great opportunity, and invest in America's greatest resource — Mindpower.

FUTURE

Phonathon — On March 10, 11, 12, 13, and 17, 18, 19, 20 as many alumni as possible will be receiving a call from the campus during the 1986 PHONATHON. Our goal in pledges for this year is \$40,000 with \$12,500 going towards scholarships for students. Please put these dates on your calendar and be much in prayer for this special event.

We'll need at least 20-25 workers each night for the above dates. Some will be doing the paper work and some will be phoning the alumni all over the United States. It's an exciting time to watch the enthusiasm grow and to see the Lord work. Several people are on hand to take prayer requests as they come in from you. Can you pray? Work? Give? It takes all of that to make the phonathon a success. **Call (219) 456-2111** and Marceil Zehr will be glad to set up a time for you to get involved in this important service to the College.

Alumni Chapel — The annual Alumni Chapel service will be Tuesday, April 22, 1986, at 10 a.m. Rev. Calvin Rychener (g'81), pastor of the Evangelical Mennonite Church in Grabill, IN, will be the speaker for the day. Eight alumni scholarships will also be presented during that chapel period. One new scholarship will be presented from the Indianapolis FWBC alumni chapter.

Alumni Banquet & Class Reunions — This year's Alumni Banquet on Friday, May 9, 1986, will not only be a time of recognizing the 1986 graduating

class, but will be a special time of fellowship and reunion. The special reunion classes for this year are: 1976, 1966, 1956, 1946, 1936, 1926, and 1916.

TEACHING OPPORTUNITIES

Metropolitan School District
of Warren Township
9301 East 18th Street
Indianapolis, IN 46229

Dr. Dennis Vogan, Supt.
Faith Academy
Box 820 MCC
Makati Rizal 3117
Philippines

Douglas Co. Christian School
2079 NW Witherspon
Roseburg, Oregon 97476

East Noble School Corp.
Kendallville, IN 46755

Quisqueya Christian School
Port-au-Prince, Haiti
MFI — Bekkett 18
P.O. Box 15665
Palm Beach International Airport
W. Palm Beach, FL 33406

Wycliffe Bible Translators
Huntington Beach, CA 92647

East Palestine City School
District
360 West Grant Street
East Palestine, OH 44413

Evansville Christian School
4400 Lincoln Ave.
Box 5353
Evansville, IN 47715

FWBC FEATURED ALUMNA:
PAT BYALL

By Eunice Conrad

Pat Byall, a 1960 FWBC graduate and now a second-term member on our Governing Board, believes growth and change are important. Her vocation and avocations give visible proof of this.

From nine to five and beyond, Pat's daily work as Assistant Director of Student Services for Fort Wayne Community Schools brings her constantly into student, school, and family counseling situations where the only positive solutions involve growth and change. On the phone, in meetings, student sessions, family conferences, and in cooperation with the courts and city agencies, Pat works with nitty-gritty, non-academic matters such as irregular attendance, truancy, disciplinary actions, and the establishment of residency.

"The better we understand ourselves, the better we understand others," she says with conviction. She recalls her own growth and change about ten years ago when she attended a seminar for business and professional women at the Narramore Christian Foundation in Rosemead, California. This experience, she says, marked the awakening of new insights into the potential in herself and others. She has continued to study the biblical and psychological aspects of change and growth. "All of this has been fun and very meaningful," she says, as a huge smile lights up her face.

She shares her experience of joyous discovery with a number of groups in the



Alumna Pat Byall works at her desk.

city. A current one is a group of 30-35 women of all ages who are meeting together during the Sunday School hour at Westview Alliance Church. The name of the class is — you guessed it — "Emotional and Spiritual Growth and Change".

The physical aspects of good health, said Pat, must also be considered and she gave examples of how important this is as she works with students in helping them make needed changes to care for their physical health. Pat looks after her own physical health by swimming, playing golf and taking long walks. She also enjoys spectator sports: basketball, football, and baseball. She has been a loyal Cubs fan through the lean years.

**EVENING CLASS
OPTIONS INCREASE
AT FWBC**

by Doug Barcalow

In an effort to reach the nontraditional student, FWBC evening classes have increased to 14 available for the spring semester. Evening credit classes are scheduled on Monday, Tuesday, and Thursday nights.

The additional classes represent a concern of the College to meet the dynamics of a changing student body. The traditional image of the 18-22 year old college student is rapidly being altered by a diminishing number of students in that age bracket, combined with an increasing number of returning students or part-time students. In an attempt to help meet the scheduling needs of today's students, the College's Department of Continuing Education is looking into alternatives to the daytime class schedule, which has been predominant for the past two decades.

The immediate result is an increase in the number of classes being offered in an evening format. Additionally, the type of class and the course content are evaluated to determine if there is a community need that can be met by scheduling a particular course at a non-traditional time.

All of this is being done in an effort to keep Fort Wayne Bible College in tune with the educational needs of our students and the Christian community that we serve.

**Alumni Activities
Newsgram**

Name _____
Spouse _____
Maiden Name _____
Street _____
City/State/Zip _____
Telephone _____

What YOU do is news to other FWBC alumni. Complete, clip, and mail this form to the Alumni Office, Fort Wayne Bible College, 1025 W. Rudisill Blvd., Fort Wayne, IN 46807
OCCUPATION
His _____
Hers _____
FWBC CLASS
His _____
Hers _____

Children's names and ages _____
News (births, moves, job change, promotions, marriages, etc.) _____

BABIES

Becky (Hawkins fs76-78) and **Martin Diller (fs77-78)**: Twins, Juliann and Jordan Wesley, born June 5, 1985. Older brother, Joseph, is 4 years old. 408 South Jefferson, Pandora, OH 45877.

Becky (Brooke g80) and **Geff Fisher (g80)**: Marc Ryan, born April 1, 1985, joining his sister Michel Brooke, who is two years old. R.R. 2 Box 150, Shipshewana, IN 46565.

Barb (Holtzclaw g80) and **Matt (g81) Hartsell**: Joshua Matthew, born October 10, 1985. 55 Hi-Lo Drive in Bluffton, IN 46714.

Denise and **Philip (g84) Hentz**: Michael Andrew, born September 21, 1985. 3335 Timber Hill Drive, Apt. 204, Fort Wayne, IN 46815

Doris (Bowsher g74) and **Ben Hyde III**: Bethany Joy, born April 2, 1985. P.O. Box 189, Annapolis, MD 21404.

Darlene (Loucks g80) and **Larry Hyland (fs79-82)**: Lydia May, born January 22, 1985. Welcomed by brother Joshua David, age 3. P.O. Box 2724, Sun Valley, ID 83353

Kim (Armstrong fs78-80) and **Joe (g80) Jacobs**: Lauren Brittney, born July 30, 1985, joins Andrea Kavis, age 3. Joe is a full-time student at Trinity Seminary, and they live at 514 N. Spring, Elgin, IL 60120.

Lois (Paxson g74) and **Rollin Jump**: Jennifer Lynn, born October 28, 1985. Route 4, Warsaw, IN 46580.

Linda (Craig g72) and **James Keifer (g73)**: Johnathon James, born March 14, 1985. Sisters are Lori, age 7, and Tami, age 2. 2716 Kingland Ct., Fort Wayne, IN 46815.

Joan (Moser g77) and **Nicholas Kochmann**: David Nicholas, born August 14, 1985, joins his brother, Samuel James, age 2. 4222 Beaver Avenue, Fort Wayne, IN 46807.

Carolyn (Main g68) and **Ernest (g65) Maslin**: Simeon David, born August 31, 1985. His brothers, Aaron, age 7, and Andy, age 11, are delighted with him. 6501 Old Fort Wayne Road, Huntington, IN 46750.

Wanda (Rodgers g80) and **Joel (g80) McClure**: Andrew Thomas, born on December 27, 1984. 240 Reed St., Willow Grove, PA 19090.

Jan (Zehr fs74-75) and **Dean (fs74-75) Meyers**: Kyle Dean, born June 19, 1983, and Landon Dean, born on October 17, 1975. 7123 Woodhue Lane, Fort Wayne, IN 46804.

Vicki (Vincent g83) and **Tony**

(g84) Miller: Danielle Elizabeth, born October 23, 1985. 2381 Scout Rd., East Troy, WI 53120.

Carol (Blomberg fs74-75) and **Al (g77) Seawell**: Lindsey Marie born September 15, 1985. Older brothers are Ryan, age 7, and Jeremy, age 2. Al is a teacher at Fort Wayne Christian School. Their address is 2016 Parnell Ave., Fort Wayne, IN 46805.

Nancy (Porter g78) and **Jim Walker**: Grantland Donald, born September 13, 1985. Welcomed by sister, Jenelle Leanne, who was 4 in November.

WEDDINGS

Lisabeth Ann Lay and **Ted Brian Wilson** were married Saturday, December 21, 1985, in Fellowship Missionary Church in Fort Wayne, IN.

Juanita Young (g69&72) and **Luke Lobell** were married Saturday, August 31, 1985, in Circleville, OH. Their new address is 4383 Springcreek Dr., Apt. L, Dayton, OH, 45405.

CLASS NOTES

1951-1960

Doris (Siler fs51-53) Keene living in Wolverine, MI, where husband **Paul (fs50-53)** is Superintendent of Schools in a small district, have three children and four grandchildren.

Elaine Perry (g56) on furlough from Ivory Coast, W. Africa, will begin her 6th term in January, 1986, and is teaching Bible to African youth.

1961-1970

Sue Breiner (g68) is a Chaplain at the University of Iowa Hospitals and Clinics in Iowa City, Iowa.

Patty (McCune g57) and **Wes Christian (g61)** write from Aurora, CO. Patty is involved in Bible study fellowship and Wes is a United Airlines Flight Operations Instructor. Their daughter, April, is a student at Texas A & M University.

Mrs. Harold Hall (Sarah Carr g68) says she is busy with four children, teaching a 6th grade Sunday School class, and leading the church choir. Harold is a Cub Scout leader. They praise God for His blessings and care. They live in Byron Center, MI.

Crystel (Hafer g61) Marsh and her husband, Smith, live in Arcadia, FL, and would love to hear from classmates. She's disabled and has so much time for correspondence. Their address is Rt. 4, Box 991, Arcadia, FL 33821.

1971-1980

Geff Fisher (g80) received a B.A. in Business Accounting from I.U. — Bloomington. He and **Becky (Brooke g80)** have moved back to Shipshewana, IN., where Geff works for an accounting firm in Goshen and they both help with the youth at Berea Missionary Church.

Kathy (Hughes g71) and **Steve Miller** write from Manzini, Swaziland, that, during a thunderstorm some windows were broken in missionary homes by baseball-size hail! Praise the Lord no one was hurt. Things were rather wet in the homes, but nothing was damaged. Their children, Kimberly, 5th grade, and Bryan, 4th grade, are adjusting well and like to ride their bikes all over the dirt roads in the "neighborhood".

Debbie (Ross fs76-79) Nayrock enjoys teaching at South Bend Community Schools. Her husband, **Craig (g79)**, works in the Loan Department for Teacher's Credit Union.

Cyndie Rogers (fs77-78) is Director of Christian Education at Victory Life Church in Tallmadge, OH.

Nancy (Porter g78) and **Jim Walker** reside in West Chicago in a custom home Jim designed and built in 1983. Jim is employed as a carpenter and designer/draftsman for Walker Construction of Warrenville, IL. Nancy is a full time homemaker. They are members of the Blanchard Road Christian and Missionary Alliance Church in Wheaton, IL. There Jim serves on the Building and Grounds Committee and Nancy is a pianist/organist and also is a coordinator for scheduling worship service musicians.

Alida (g74) and **Bill (g74) Willis** write from Hamilton, IL. Bill was ordained by the Evangelical Free Church November 3, 1985, and is now a pastor. Alida was promoted to District Manager by Kirlin Co. They have two daughters. Kim, age 7, arrived from Korea in February of 1985 and Kara is 11.

1981-1985

Darleen Bittner (g84) is a missionary nurse in LaJeune, Haiti.

Rev. and Mrs. Glenn (g80) Cate have moved to Fort Wayne from St. Petersburg, FL. Becky is a non-graduating senior at FWBC and Glenn is working at Brotherhood Mutual Insurance Company and Radio Shack.

Norman Gifford (g83) is working as Youth Director at Dunfee Missionary Church.

Sally and **Bill (g84) Lepley** live in Berne, IN, where Bill became Senior Pastor of West Missionary Church in July of 1985.

Second Lt. Edwin T. Roberts (g81) has completed the U.S. Air Force military indoctrination for medical service officers at Sheppard Air Force Base, Texas. The course acquaints newly commissioned medical personnel with professional and administrative responsibilities as Air Force officers. Roberts is scheduled to serve at Wright-Patterson Air Force Base, Ohio.

Beth (Donigan g81) and Mark **Seversen** are living in Wauwatosa, WI. Beth graduated with a Master of Divinity degree from Trinity Evangelical Divinity School in December, 1985. She is a Women's Ministries Resident at Elmbrook Church, Milwaukee, WI, and toured South Africa with Jill Briscoe in August in a "Women in Leadership" seminar.

WITH THE LORD

Esther (Sprunger g14) Hirschy, a pastor's wife in Evans City, PA., died in March, 1985.

Christine Stauffer (g21), a missionary for many years, died in February, 1985, at the age of 93.

MEMORIAL GIFTS

Memorial to Rev. Daryl Cartmel
Mr. and Mrs. Tim Erdel

Memorial to Rev. J.J. Klopfenstein
Andrew J. Nussbaum

Memorial to Mrs. Evelyn Sommer
Mr. and Mrs. Bill Sommer

Mrs. Lina Sommer
Mr. and Mrs. David Vinton

Memorial to Dr. Forest Weddle
Mr. and Mrs. Paul H. Sheets

Memorial to Mrs. S.A. Witmer
Rev. and Mrs. Paul Erdel

JOB HUNTING

The following churches and organizations have written to the Placement Office indicating openings in the following positions. If you would like further information about these openings, write the Placement Office and refer to the code number.

Minister of Congregational Life. North Suburban Evangelical Free Church. Deerfield, IL. A - 2.

Full Time Pastor. The Pleasant View Church. Lebanon, IN. A - 3.

Pastor. Reading Baptist Church. Reading, MI A - 4.

Full Time Associate Pastor. First Baptist Church. Defiance, OH. A - 5.

Pastor. Maple Grove Bible Church. Marshall, MI. A - 6.

Pastor. Whitestown Missionary Baptist Church. Whitestown, IN. A - 7.

Part Time Assistant Pastor. Main Street United Brethren in Christ. Walbridge, OH. A - 8.

Pastor. First Baptist Church. Asbury Park, NJ. A - 9

Pastor. Community Bible Church. Butler, IN. A - 10.

Pastor. Blessed Hope Bible Church. Ashville, OH. A - 11.

Full Time Pastor. Dorchester Drive Baptist Church. Erie, PA. A - 12.

Pastors. Northwest District of the Missionary Church, Inc. Camas, WA. A - 13.

Pastor. Teegarden Congregational Christian Church. Ansonia, OH. A - 15.

Pastors, Church Planters, Support. Illinois-Wisconsin Conference of the Free Methodist Church. Waukegan, IL. A - 16.

Part Time Christian Education Director. Auburn Presbyterian Church. Auburn, IN. B - 3.

Christian Education and Youth. First Baptist Church. Mt. Clemens, MI. B - 4.

Christian Ed Director. Courtland Avenue Friends Church. Kokomo, IN. B - 5

Full Time Minister of Christian Education & Music. Evangelical Mennonite Church. Archbold, OH. B - 7

Christian Ed Director. Calvary Presbyterian Church. Logansport, IN. B - 9.

Minister of Christian Ed. Calvary Evangelical Church. Van Wert, OH. B - 10.

Christian Ed Minister. College Park United Brethren. Huntington, IN. B - 11.

Part Time Director of Religious Education for Children. Faith United Methodist. Fort Wayne, IN. B - 13.

Associate Staff. Erie Area Youth for Christ. Erie, PA. C - 4.

Youth Pastor. Calvary Memorial Church. Racine, WI. C - 5.

Full Time Youth Director. Markle United Methodist Church. Markle, IN. C - 6.

Staff. St. Clair Youth for Christ. Port Huron, MI. C - 7.

Part Time Youth Pastor. Central Baptist Church. Richmond, IN. C - 8.

Full Time Youth Pastor and/or Youth & Music. Midland Street Peoples Church. Bay City, MI. C - 9.

Full Time Youth Minister. First Presbyterian Church. Warsaw, IN. C - 10.

Asst. Director of Youth Ministries. First Presbyterian Church. Red Bank, NJ. C - 13.

Minister of Youth. Calvary Evangelical Church. Van Wert, OH. C - 14.

Full Time Minister of Youth. Calvary Memorial Church. Wayzata, MN. C - 16.

Youth Pastor. East Jordan Missionary Church. East Jordan, MI. C - 23.

Full Time Director of Christian Ed. Clarenceville United Methodist. Livonia, MI. C - 24.

Minister of Youth and Music. First Baptist Church. Key West, FL. C - 26.

Staff. Young Life. Hinsdale, MI. C - 27.

Part Time Director of Music. Calvary Evangelical Church. Van Wert, OH. E - 3.

Full Time Minister of Music. St. Giles Presbyterian Church. Richmond, VA. E - 4.

Music/Youth Director. First Baptist Church. Ruskin, FL. E - 5.

Male and Female Dorm Supervisors. New Life Christian Center. Fort Wayne, IN. F - 7.

Staff. Inner City Impact. Chicago, IL. F - 8.

Houseparents, Child Care Workers, Supervisors. Indiana Children's Christian Home. Ladoga, IN. H - 15.

Assistant Child Care Worker. The Marsh Foundation. Van Wert, OH. H - 23.

Counselors, Program Counselors, Farm Manager. The Fold, Inc. Lyndonville, VT. H - 28.

Houseparents. Noble County Training Center. Albion, IN. H - 29.

Houseparents, Child Care. Bethanna. Southampton, PA. H - 30.

Staff. Scripture Press Publications. Wheaton, IL. K - 14.

Advertising. Ludwig Otto Companies. Bedford, TX. K - 17.

Social Worker. Western Indian Ministries. Window Rock, AZ. K - 22.

Church Planters, Support Help. Faith Missionary Church. Maryville, MO. K - 23.

Staff. Josh McDowell Ministry. Richardson, TX. K - 24.

Staff. Cedar Lake Bible Conference Center, Cedar Lake, IN. K - 26.

Dramatists. Iowa Christian Theater. Washington, IA. K - 27.

Enrollment Counselor. Fort Wayne Bible College. Call (219) 456-2111, Ext. 274 for details. K - 30.



FWBC Student Bill Ridder prepares pizza for FWBC's annual Pops-n-Pizza Concert.

NO EASTER?

By Stan Nussbaum

"Where There Is No Easter" is the title selected for the Outreach '86 Missions Conference at FWBC on Saturday, March 22, the day before Palm Sunday. The event is timed to remind us that the Easter season we celebrate is unknown in about half the world. Speaking at the conference will be Gregg Livingston, founder and President of Frontiers, Inc., a mission agency dedicated to innovative approaches to Muslim evangelism.

Though one in six persons alive today is a Muslim, mission boards have typically done very little work among Muslims and had few converts. This conference promises to stretch our vision and increase our faith as we begin to imagine what may be the next great advance in the history of the Kingdom of God — a turning to Christ in the Muslim world.

The annual Outreach conference, hosted by FWBC, is sponsored by a board including representatives from seven denominations, and is partially funded by the Clyde Taylor Endowment for World Missions of FWBC. Everyone is invited to the sessions. Registration fee is \$5.00 for adults and \$2.00 for students. The conference is held in Founders Auditorium beginning at 9:00 a.m. and ending at 3:00 p.m. Workshops are planned for five groups of people: mission executives, former and furloughing missionaries, local mission committee members, pastors, and prospective missionaries.

'POPS 'N PIZZA' RETURNS TO FWBC CAMPUS

by Dana L. Collins

A delightful evening of musical variety, accompanied by enough pizza and soda pop to satisfy the most insatiable appetite, will once again be offered to Fort Wayne community members and Bible College family and friends on Friday, February 28, and Saturday, March 1. The annual, All-You-Can-Eat "Pops 'N Pizza" concert will be presented by the FWBC Concert Band, featuring a variety of musical styles and selections including marches, light classics, popular tunes, musical comedy, and Broadway showtunes.

The program is an excellent choice of entertainment for a Sunday School social gathering or night out for the entire family. The Concert Band has added a second evening of "Pops 'N Pizza" this year, scheduled at an earlier time to make it more convenient for the whole family to attend. Concert times are Fri-

day, February 28, at 6:30 p.m., and Saturday, March 1, at 8 p.m. The program lasts about one and a half hours.

Professor Dana L. Collins, Music Director of the Concert Band and Assistant Professor in the Music Program, has guided the last four "Pops 'N Pizza" events. Under Collins' leadership, the "Pops 'N Pizza" program has developed into a full-length concert experience, following the Boston Pops format of three sections and two intermissions surrounding a feature-length musical selection. This year's feature presentation will be Moussorgsky's "Pictures at an Exhibition".

The program has built a successful history, playing to sell-out crowds for the past four years. Reservations can be made by calling the FWBC Music Office at (219) 456-2111, Extension 204.

Seating is limited.

Group and family discounts are available. The concert will be presented in the Founder's Auditorium on the FWBC campus (corner of Indiana and Rudisill Boulevard, Fort Wayne).

PULSE/LIFELINES is published three times a year by Fort Wayne Bible College, 1025 West Rudisill Boulevard, Fort Wayne, Indiana 46807. TELEPHONE: (219) 456-2111. FOR ADMISSIONS, CONTACT: 1-800-233-FWBC, in Indiana, call collect (219) 456-2111 (Admissions only).

President:
V.P. for Academic Affairs:
Alumni Director:
Dir. of Business Affairs:
Development Coordinator:
Communications Coordinator:

Harvey R. Bostrom
Richard P. Dugan
Bill Gerig
Dean Grable
Sharon Hull
Debbie Carter

Pulse Lifelines

1025 W. Rudisill Blvd.
Fort Wayne, Indiana 46807

Non-Profit
Organization
U.S. POSTAGE
PAID
Fort Wayne, Ind
PERMIT No. 267