

Taylor University

Pillars at Taylor University

Yearbooks (TUFW & Predecessors)

Publications for TUFW and Predecessors

12-31-1960

Light Tower 1961

Fort Wayne Bible College

Follow this and additional works at: <https://pillars.taylor.edu/tufw-yearbooks>



Part of the [Higher Education Commons](#)

Recommended Citation

Fort Wayne Bible College, "Light Tower 1961" (1960). *Yearbooks (TUFW & Predecessors)*. 113.
<https://pillars.taylor.edu/tufw-yearbooks/113>

This Book is brought to you for free and open access by the Publications for TUFW and Predecessors at Pillars at Taylor University. It has been accepted for inclusion in Yearbooks (TUFW & Predecessors) by an authorized administrator of Pillars at Taylor University. For more information, please contact pillars@taylor.edu.



Light Tower





ALUMNI ASSOCIATION

STUDENT ASSOCIATION PUBLICATION
FORT WAYNE BIBLE COLLEGE
Fort Wayne, Indiana



Light Tower



BETHANY HALL - Administrative Offices, Women's Dormitory, Classrooms

THIS IS F.W.B.C...

LEIGHTNER HALL
Women's Dormitory

SHADY COURT HOUSE
Women's Dormitory





FOUNDER'S MEMORIAL - School of Music,
Auditorium, Gymnasium, Dining Hall,
Classrooms

801 WEST RUDISILL HOUSE
Women's Dormitory

WHERE WE SEARCH FOR TRUTH...

SCHULTZ HALL
Men's Dormitory, Classrooms, School Laundry

PROVIDENCE HALL
Women's Dormitory





Reading Room of the new LEHMAN MEMORIAL LIBRARY

THE TRUTH TO SET US FREE

Mrs. Alvin Bump, assistant librarian, checks out books for Ruth Moser.

Christ said, "Ye shall know the truth and the truth shall set you free." (John 8:32). Students at Fort Wayne Bible College are searching for the truth-- God's truth to be found in the educational, spiritual, and social realms of college life.

We learn the truth by knowledge and wisdom gained through study, by our spiritual growth in Christ-likeness through our Christian ministries, and by our daily walk in Christian fellowship. It is only when we have learned the truth ourselves that we can impart it to all tribes and nations of the earth.



Table of Contents

Title Page	1
Campus and Theme	2 - 4
Educational	6 - 47
Governing Board	8
Dedication	9
Faculty and Staff	10 - 16
Seniors	17 - 26
Underclassmen	27 - 47
Spiritual	48 - 65
Services	50 - 54
Crossroads	55
Music Ministry	56 - 59
Christian Service	60 - 65
Social	66 - 85
Extracurricular Activities	68 - 75
Athletics	76 - 80
Student Association	81 - 83
Campus Life	84 - 85
Advertising	86 - 95
Directory	96 - 100

Chairman Jerry Cramer
Managing Editor Gail Horrocks
Literary Editor Alice Joy Weddle
Advertising Manager David Jacobson
Circulation Manager Jesse Adams



Education



We are born to inquire after
truth;
It belongs to a greater power
to possess it.
It is not . . . hid in the bottom
of the deeps, but rather
elevated to an infinite
height in the divine knowledge.

--Montaigne



Seated: Rev. Tillman Habegger, Dr. Clyde Taylor, Mr. James N. Beltz, Mr. J. Francis Chase, Rev. Carl Miller, Dr. Jared F. Gerig. Standing: Mr. Henry Amstutz, Rev. Roy Ramseyer, Rev. Robert Strubhar, Rev. John Nussbaum. Not Pictured: Rev. William Whiteman, Mr. Forrest Balsiger, Mr. Maurice M. Rupp.



GOVERNING BOARD

J. Francis Chase, Chairman

DEDICATION



To a man of God, friend of students, leader of men...kind, considerate...practical and efficient...firm but loving...ever calm...respected counselor...who feels a sense of responsibility under God for us (especially for those of us who never seem able to make it, but do)...who considers our problems his own...

To you, Dean Eicher, we dedicate the 1961 Light Tower; for in your home, on the ball field, in the classroom, and in the office, you have shown us Christ.

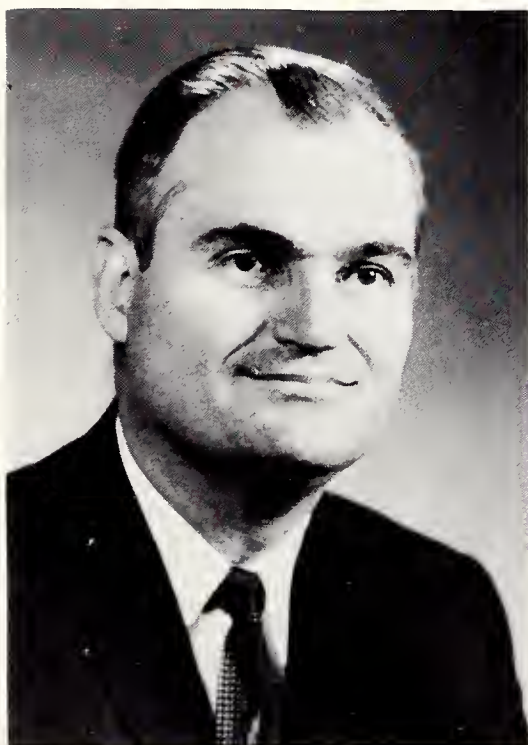
Dr. Jared F. Gerig has been traveling extensively this year in an effort to raise funds for our building program. He is serving in his fourth year as the president of Fort Wayne Bible College.

Prior to this time Dr. Gerig served the college as a member of the governing board, as a dean, and as an instructor. He has also had experience as a pastor, national youth leader, editor of a periodical, member of a mission board, and president of the Missionary Church Association. In serving the Lord, he has been a great spiritual leader to all of us.



Jared F. Gerig, A.B., Th.B., M.A., D.D.,
Professor

ADMINISTRATION



Herbert W. Byrne
A.B., B.D., M.S., Ed.D.
Dean of Education, Professor



Cyril H. Eicher
A.B., Th.B., M.A.
Dean of Students
Associate Professor



Herald J. Welty
B.R.E., M.S.
Registrar
Instructor in Education

Walter E. King
Assistant to the President
in Development

Mrs. Grant Hoatson
B.S.
Dean of Women

Harold W. Ranes
A.B., B.D., M. Th., M.A.
Dean of Men
Assistant Professor of Bible



Miss Joy Gerig
Director of Christian Service

C. V. Harter
Business Manager



FACULTY

Miss Eunice J. Conrad
A.B., M.A.
Assistant Professor of English

Miss Edith Ehlke
A.B., A.M. in Library Science
Librarian, Associate Professor



Richard M. Elmer
A.B., B.D., B.M., M.A.
Assistant Professor of Music

Rene Frank
M. Mus., D. Mus.
Professor of Music



Ralph A. Gallagher
A.B., Th.B., M.A.
Assistant Professor of
History and Science

Ira A. Gerig
B.M., M. Mus.
Assistant Professor of Music



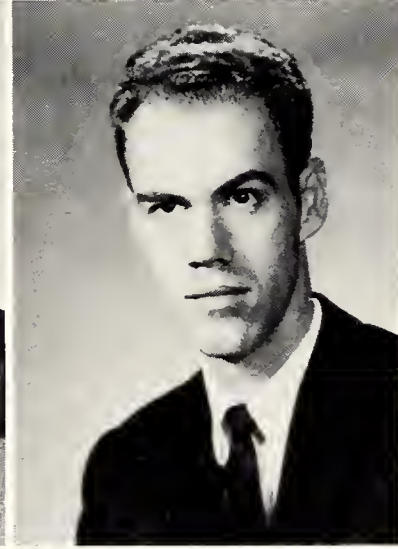
Wesley L. Gerig
A.B., B.D., Th.M.
Assistant Professor of
Bible and Theology

Truman Gottschalk
B.A.
Instructor in Spanish



Grant Hoatson
A.B., M.A.
Instructor in Radio
and Journalism
Director of Public Relations

Walter J. Kerfoot
B.S., M.Mus.
Instructor in Music



Weldon O. Klopfenstein
Th.B.
Assistant Professor of
Bible and Theology

Earl Stanley Leonard
A.B., Th.B., M.R.E., M.A.
Instructor in Education

Oswald Morley
A.B.
Assistant Dean of Men
Coach
Instructor in Bible

Robert S. Myers
B.S., M.A.
Instructor in Music



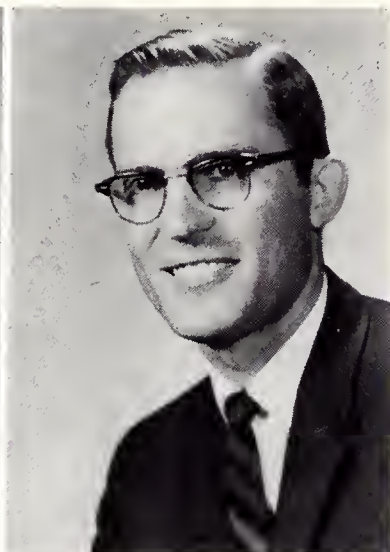
Miss Carolyn Pocock
B.M., M.M.
Instructor in Music

Miss Eleanor Mae Rich
R.N., B.S.
Instructor in Health



Miss Gladys Schumacher
B.A., M.A.
Assistant Professor of Education

Edward D. Simpson
B.S., B.D., Th.M., Th.D.
Associate Professor of
Bible and Theology



Mrs. Frances F. Simpson
A.B., M.R.E., D.R.E.
Associate Professor of
Religious Education

Timothy M. Warner
A.B., S.T.B., M.A.
Instructor in Missions

Forest Weddle
A.B., M.S.
Assistant Professor in
Bible and Archaeology
Director of Research and Guidance

Miss Dorothy A. West
B.A., M.A.
Instructor in Speech





Adolph Bley
Maintenance Assistant

Mrs. Myrtle Brown
Cook

Mrs. Alvin Bump
Assistant Librarian

Miss Shirley Cupp
Assistant to Bookkeeper

P. L. Eicher
Commissary Manager

Miss Martha Fiedler
Dining Room Supervisor

STAFF

Mrs. Fern M. Gallagher
Bookstore Manager

Miss Adelle Isaac
Secretary, Registrar's Office

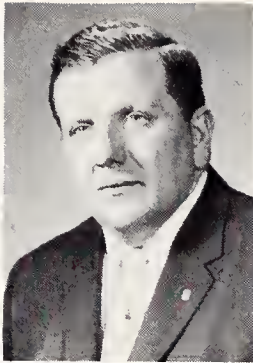
Mrs. Grace King
Secretary, Public Relations Office

Mrs. Donna Leonard
Secretary, Guidance Office

Miss Millie Lindsey
Secretary to President

Miss Donna Lutton
Secretary to Dean of Students





Miss Jennie Miller
Cook

Mrs. Betty Ranes
Hostess, Schultz Hall

Edison Reynolds
Director of Maintenance



Miss Evelyne Schmidt
Bookkeeper

Miss Ada Smith
Laundress

Mrs. Bertha Vlot
Cook



Miss Mary Ann Wagner
Secretary to Dean of Education

Mrs. Miriam Welty
Secretary, Founders Memorial Office



Dr. Lohman, the college physician, attends to a patient while Miss Rich watches.



Class Officers: Raymond Bryant, president; Judy Thompson, secretary; Morris Jacobsen, chaplain; Dorothy Martin, vice-president; Ronald Krause, treasurer; Carolyn Derreth, student council representative; and Mr. Cyril Eicher, adviser.

THE SENIOR CLASS.

We remember when we became college students and how enjoyable, though perplexing, we found the freshman year. Then we became cocksure sophomores, anxious to hurry-scurry into our careers, yet willing to have our ambitions checked until after graduation. As juniors we saw our sophomoric knowledge diminish, and we began to find true

wisdom. Leaning more and more on our Lord, we became seniors; and by May 29, 1961, we had learned to trust our Guide more completely than ever before. On that day we stepped across the threshold of graduation, ready to enter our life work for the Lord Jesus Christ and to keep on "reflecting His light."



JESSE ADAMS

B.A. in Pastoral Training. Sunday School Teacher 3,4,5; Tract Team 1,2; Youth Director 5; Mission Worker 5; Light Tower Circulation Manager 5; Oratorio 3,4,5; Youth Conference Treasurer 4; Youth Conference Committee 3; Alpha Kappa Club 3,4, President 5; Class Treasurer 1,4; Dormitory Council 3,5; A Cappella 5; Student Manager Varsity Basketball 4,5; Intramural Sports 1,2,3,4,5; Intramural Sports Leader 5; Orientation Leader 4,5.

JUNE MAXINE BAKER
B.S. in Elementary Education. Child Evangelism 2; Sunday School Teacher 3,4; Oratorio 1; Camera Club 4.



MARY V. BELL
Standard Bible Course. Sunday School Teacher 1,2,3; Child Evangelism 2; Prayer Band Leader 2; Beginner's Church 1.



GEORGIA BLACK

B.S. in Elementary Education. Child Evangelism 1,2; Sunday School Teacher 3; Junior Christian Endeavor 4,5; Dormitory Council 3, Vice-president 4.

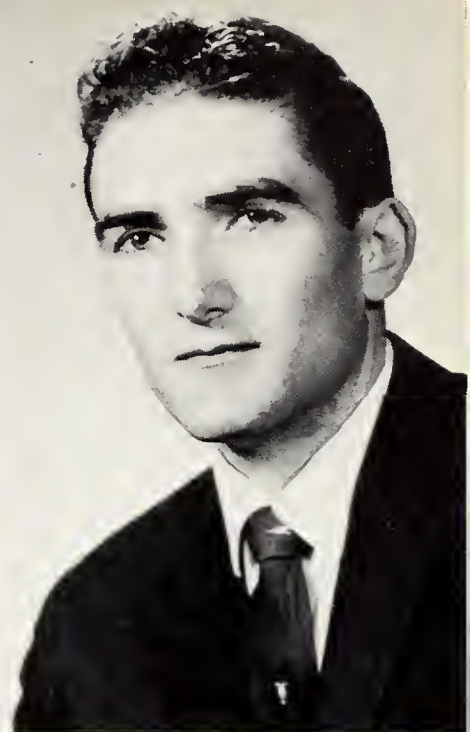
ALICE ROSE BLODGETT
B.S. in Missionary Nursing. Missionary Deputation 4,5; Camera Club 4; Dormitory Council Secretary 5.



LYNN H. BOWMAN
B.A. in Speech. Sunday School Teacher 2; Mission Speaker 3,4; Junior Church Worker 4; Alpha Kappa Club 3,4; Speech Club 3,4; Parliamentary 2.



LUELLA CATHERINE BURLEY
B.A. in Bible. Missionary Deputation 4.



WESLEY F. CHRISTIAN
B.A. in Bible and Theology. Song Leader 1,2,3,4; Children's Worker 2,3,4; Choir Director 3; Assistant Pastor 3; Band 1,2; Class President 2; Class Vice-president 3; Youth Conference 3; Youth Conference Ensemble 4; Student Council 4.

RAYMOND BRYANT

B.S. in Missions. Tract Team 2; Sunday School Teacher 3; Song Leader 4; Class Chaplain 3; Class President 4.



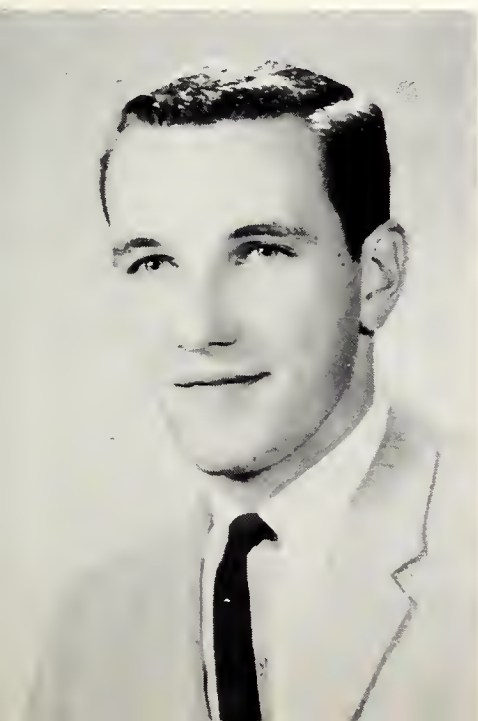
CAROLYN E. DERRETH

B.S. in Missionary Nursing. Child Evangelism Helper 1; Hospital Visitation 5; Counselor 5; Junior Church 5; Oratorio 1; Intramural Sports 1; Dormitory Council 1; President 5; Student Council 5; Alpha Kappa Club 5.



PAUL DeMERCHANT

B.S. in Missions. Song Leader 1,2; Sunday School Teacher 2; YFC Club 2; Gospel Team 3,4; Class President 2; Class Vice-president 1,3; Student Council 1,3; SMF Ensemble 1; Band 1, President 2; Oratorio 2; A Cappella 2,4; SMF Vice-president 3; Youth Conference Publicity Chairman 4; Intramural Sports 1,2,3,4; Alpha Kappa Club 3,4.



LARRY VAUGHN EICHER
Bachelor of Sacred Music. Gospel Team 2,3; Choir Director 4; SMF Organist 1,2, Treasurer 3, Music Director 4; Youth Conference Music Chairman 3, Organist 1,2,4; Class Chaplain 1; Student Council 2; A Cappella 1,2,4; Oratorio 1,2,3, President 4; Music Club 1,4; Intramural Sports 1,2,3,4; Crossroads Ensemble 1, Organist 3,4.



HANNI FEURER
 B.A. in Missions. Sunday School Teacher 3; Music Club 3; Speech Club 3; Oratorio 3; A Cappella 4.

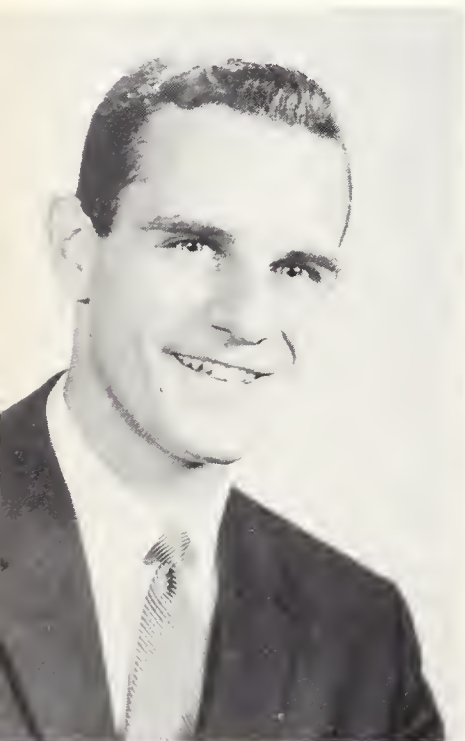


MARY ANN ELLIS
 B.S. in Elementary Education. Primary Church 2; Children's Meeting 4; Child Evangelism 3; Sunday School Teacher 5; Student Education Association 5.

GRETCHEN GALLAGHER
 B.S. in Music Education. Sunday School Chorister 1,2; Gospel Team 1,2; Church Pianist 2,5; Sunday School Teacher 5; Youth Worker 4; Music Club 2,4,5; Camera Club 1,5; Secretary 2,4; Booster Club 5; Band 2,4; Librarian 5; Oratorio 4,5; A Cappella 5; Light Tower Staff 2; Managing Editor 4; Theta Beta 1,2.



MARLA ANN GUSTAFSON
 B.A. in Social Science. Junior Church Leader 2,3; Sunday School Teacher 4; Band 1; Secretary 2; Theta Beta 1; Dormitory President 4.



WILLIAM DEAN GERIG
 B.S. in Missions. Sunday School Teacher 3; Pastor 4; SMF President 4.

CRYSTEL HAFER
 B.S. in Elementary Education. Sunday School Teacher 2; Church Nursery Attendant 2; Nazarene Caravan Guide 1; Student Education Association 1.



GAIL ILENE HORROCKS
 B.A. in Christian Education. Gospel Team 2; Sunday School Teacher 4; Oratorio 2,3,4; A Cappella 2; SMF Ensemble 3; Dormitory President 3; Light Tower Staff 3, Managing Editor 4; Prayer Band Leader 4; Orientation Leader 3,4.

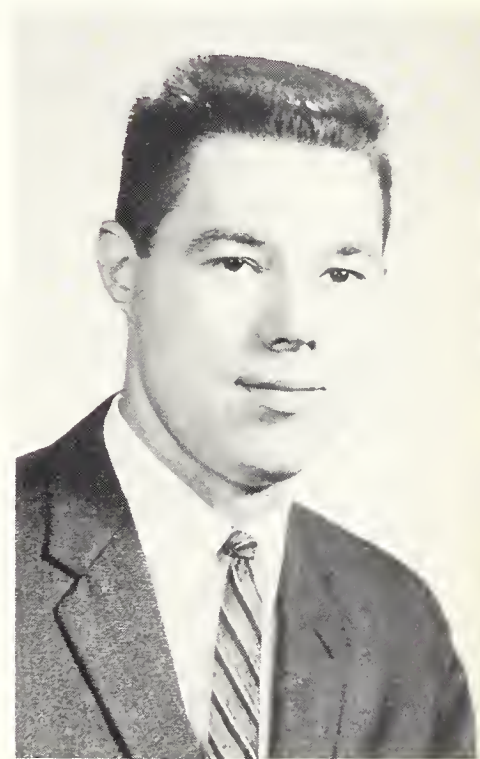


MORRIS JACOBSEN
 B.A. in Missions. Missionary Deputation 5; Class Chaplain 5; Alpha Kappa Vice-president 5.

PATRICIA MAE HARTUNG
 B.A. in Missions. Children's Mission Worker 1,2,3; Sunday School Teacher 2; Camera Club 2,3; Alpha Kappa Club 3, Secretary-treasurer 4.



YVONNE JOHNSON
 B.S. in Missionary Nursing. MYF Officer 3,4; Sunday School Teacher 5; Church Choir 5; Oratorio 1; Theta Beta 1; Intramural Sports 1.



JAMES KEY
 B.A. in Social Science. Assistant Pastor 3; Sunday School Teacher 4; Alpha Kappa Club 3,4.

DOROTHY JOHERL
 B.S. in Elementary Education. Junior Church Leader 1,2; Child Evangelism 3; Gospel Team 4; Junior Church Pianist 4; Sunshine Makers 5; SMF Ensemble 3; Youth Conference Ensemble 3; A Cappella 3; Oratorio 1,3,4; Light Tower Staff 5.





RONALD W. KRAUSE
 B.S. in Elementary Education. Gospel Team 1,2,3; Mission Worker 1, 2; Music Director 1,2,3,4,5; Sunday School Teacher 2; Youth Worker 3, 4; Class Treasurer 5; A Cappella 1; Oratorio 2; Band 1,2,3; Youth Conference 1; SMF Ensemble 3; Class Athletic Director 1; Varsity Basketball 1,2,3,4; Student Education Association 4,5; Intramural Sports 1, 2,3,4,5.

CAROL KATHLEEN Mc FARLAND
 B.S. in Missionary Nursing. Gospel Team 1,5; Oratorio 1,5; A Cappella 5; Intramural Sports 1; Dormitory Council Secretary 5.

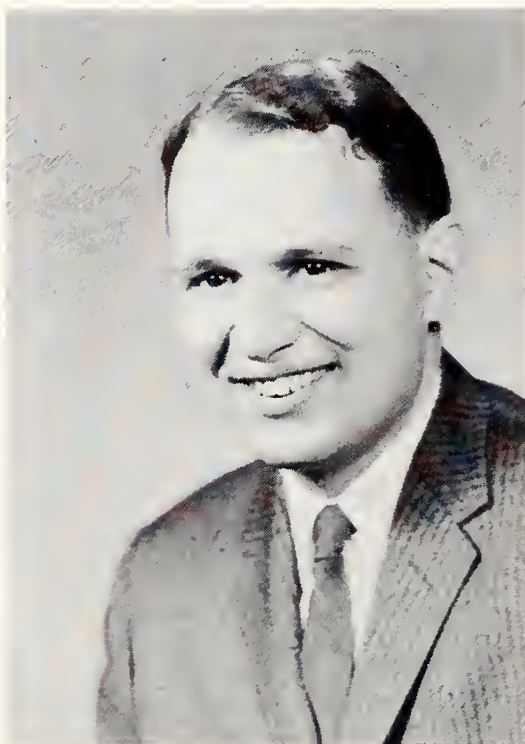


DOROTHY LEE MARTIN
 B.S. in Missionary Nursing. Gospel Team 1,5; Intramural Sports 1,5; Class Vice-president 5; Student Council 5; Oratorio 5; A Cappella 5.



A. GAIL MAZARAKI
 B.A. in Christian Education. Junior Church 5; Light Tower Staff 5.

ETHAN P. MAZARAKI
 B.A. in Missions. Junior Church 4.



SHARON FAITH MEIER
 Standard Bible Course. Sunday School Teacher 2; Beginner's Church Leader 3; Dormitory Council 2; Theta Beta 1.



RACHEL CHRISTINE MORRIS
 B.A. in Christian Education. Gospel Team 2,4; Church Music 2; Junior Church 3; Music Club 1; Theta Beta Secretary 1; Band 1; Dormitory Council 1,2; Vice-president 3; Light Tower Class Editor 2,3,4, Assistant Art Editor 3; Youth Conference Secretary 3; SMF Publicity Director 4.



HOWARD L. MOSER
 B.S. in Missions. Tract Team 1,3; "Know Your Bible" Club Counselor 4; Youth Sponsor 4,5; Dormitory Council 1; Class Treasurer 3; Class President 4; Prayer Band Leader 3.

JANET SUE MILLER
 B.S. in Missionary Nursing. Child Evangelism 1,4; Bible Study Group Leader 5; Theta Beta 1.



SHARON NANTZ
 B.S. in Elementary Education. Sunday School Teacher 3,4; Child Evangelism 1,2; Christian Education Committee 5; Sunday School Department Superintendent 5; Primary Church 3; Theta Beta 1,2; Student Education Association 5.



RUTH L. MOSER
 B.S. in Missionary Nursing. Child Evangelism 1; "Know Your Bible" Club Counselor 5; Sunday School Pianist 5; A Cappella 1; Dormitory Council 1; Oratorio 1,5.



ELAINE A. NEIMAN
 B.S. in Music Education. Gospel Team 1,2,3; Choir Director 4,5; Theta Beta 1,2; Oratorio 2,4,5, Vice-president 3; Easter Oratorio Soloist 4; A Cappella 2,3,4, Soloist 2,3; Youth Conference Ensemble 2,4, Music Chairman 5; SMF Ensemble 1,2,3,4; Booster Club 5; Crossroads Ensemble 2,3; Band 2,3,4,5.





CAROLINE ELAINE PERRY
 B.A. in Missions. Gospel Team 1;
 Sunday School Teacher 2,3,4; Class
 Treasurer 1; Class Secretary 2,3;
 Oratorio 2; Intramural Sports Lead-
 er 3; Youth Conference Co-chair-
 man 3.



DORTHA LENNAE ONSTOTT
 B.A. in Christian Education. Pri-
 mary Church Teacher 3; Junior
 Church Director 4; Sunday School
 Teacher 4; Counselor 4; Dormitory
 President 4; Booster Club 4; Ora-
 torio 3; Alpha Kappa Club 3,4.

LOWELL VINCENT PETERSON
 B.A. in Bible and Theology. Sunday
 School Teacher 3; Mission Worker
 4,5; Dormitory Council 3; Intramural
 Sports 4,5; Camera Club 5.



ORVILLE ROACH
 B.A. in Social Science. Sunday School
 Teacher 1,2,3,4, Youth Director 2;
 Alpha Kappa Club 3,4; Light Tower
 Class Editor 4.

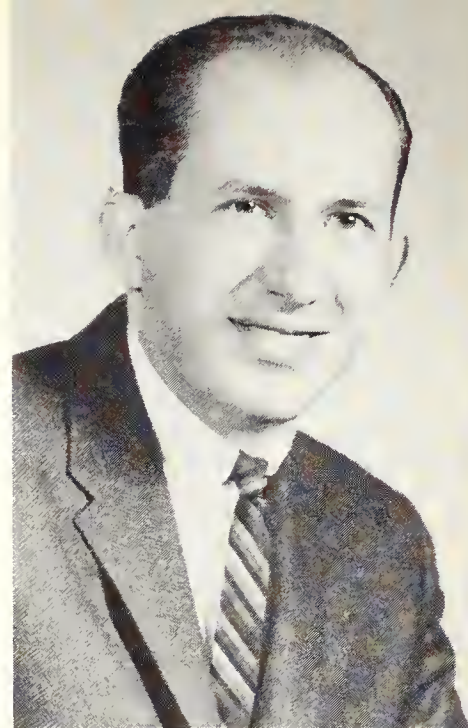


DOROTHY RUPP
 B.S. in Elementary Education. Gos-
 pel Team 1,2; Sunday School Tea-
 cher 4; Primary Church Leader 4;
 Child Evangelism 3; A Cappella 1,
 2,3; Oratorio 1,3; Youth Conference
 Ensemble 3; SMF Ensemble 2,3;
 Crossroads Ensemble 3; Class Sec-
 retary 2; Light Tower Staff 3; Dor-
 mitory Council 2,3; Theta Beta 2.

DOLORES RASHLEY
 B.S. in Elementary Education, Junior
 Church Director 1,2; Junior En-
 deavor 4; Beginner's Church 3,4;
 Student Education Association 4,5;
 Theta Beta 1,2,3.



DAVID R. SHADY
 B.S. in Missions. Boy's Club 1; Sky Pilots 2; Sunday School Teacher 3; Church Missionary Board President 4; Intramural Sports Leader 3; Intramural Sports 1,2,3,4; SMF Vice-president 4; Dormitory Council 4.



PHYLLIS JEAN SCHOLFIELD
 B.S. in Christian Education and Music. Gospel Team 2; Sunday School Teacher 3, Department Superintendent 4; Church Pianist 1, 3,4; Youth Worker 3,4; Oratorio 1, 3,4; Music Club 1,2; Theta Beta 1, 2; Play Prompter 2.



WILLIAM E. SHOOT
 Bachelor of Sacred Music. Youth Work 1; Assistant to Minister of Music 1; Organist 2,3,4,5; Music Club Treasurer 2, Vice-president 3, President 4.

JUDY ANN THOMPSON
 B.A. in Christian Education. Sunday School Teacher 3,4. Child Evangelism 4; Alpha Kappa Club 3,4; Oratorio 3; Class Secretary 4.



NANCY SINN
 B.S. in Missionary Nursing. Gospel Team 3,4,5; Counselor 5; Dormitory Council 3,5; SMF Secretary 4, Ensemble 5; Youth Conference Ensemble 4; Crossroads Ensemble 4,5; School Play 4; A Cappella 5; Booster Club 5.



DAVID F. TRUIT
 Bachelor of Religious Education. YFC Co-ordinator 1; President of Youth Group 1; Youth Worker 3; Beginner Department Superintendent 4; Youth Intern 5; Gospel Team 2; Cheerleader 1,2,3; A Cappella 2,3; Class Treasurer 3; Oratorio 1; Youth Conference Chairman 4; SMF Ensemble 1,2; Crossroads Ensemble 3.





EVELYN WALLER
 B.S. in Missionary Nursing. Child Evangelism 1; Junior Church Director 5; Theta Beta 1; Dormitory President 5.



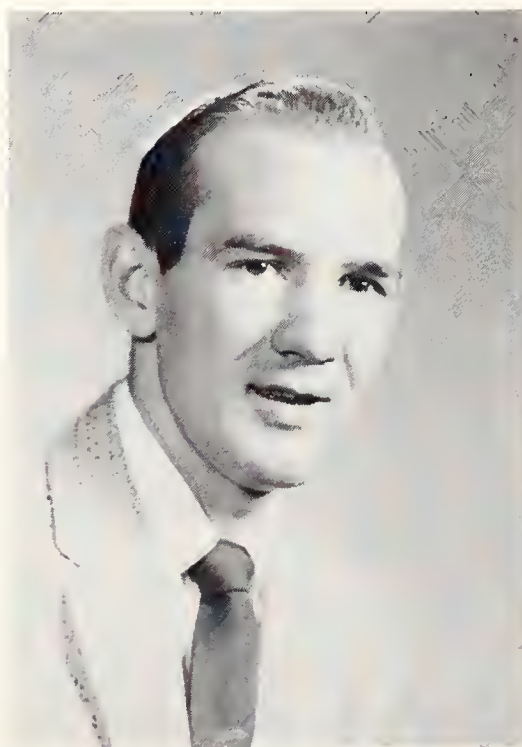
ELAINE VOSS
 B.A. in Missions. Tract Team 1; Sunday School Teacher 2,3,4; Intramural Sports Leader 3; SMF Publicity Director 3; Secretary 4.

CAROL ANN WATSON
 B.S. in Elementary Education. Sunday School Teacher 1,2,4,5; Child Evangelism 2,3; Beginner Church 1; Sunshine Makers 1; Young People's Leader 5; Visitation 5; Theta Beta 1,2; Prayer Band Leader 2,3; Oratorio 1,3,4; Light Tower Staff 1; Youth Conference Co-chairman 3; Intramural Sports 2.



GERALD C. WELSH
 Standard Bible Course. Assistant Pastor 1,2,3,4; Varsity Basketball 1; Intramural Sports 1,2,3,4.

SHIRLEY ZIMMERMAN
 B.A. in Missions. Gospel Team 1; Sunday School Teacher 2; Junior Church 3,4,5; Theta Beta 1,2; Band 1; Oratorio 1; Dormitory Council 2,3; Light Tower Staff 3.



CAROL WATTERS
 B.S. in Missionary Nursing. Child Evangelism 4; Junior Church Assistant 5; Dormitory Council 5; Light Tower Nurses' Editor 5.



NOT PICTURED:
 Ronald Hodgin
 Pearl Mullans
 Charles Williams

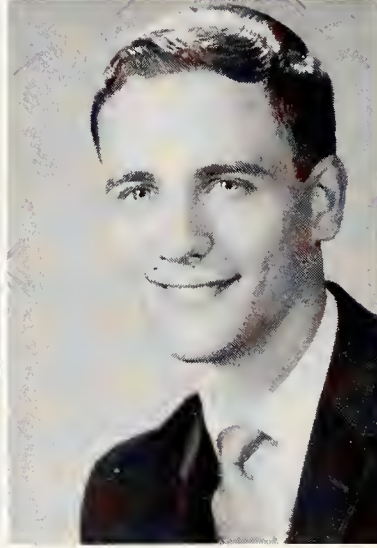
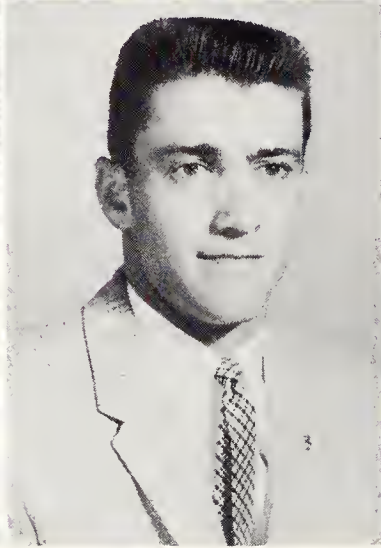
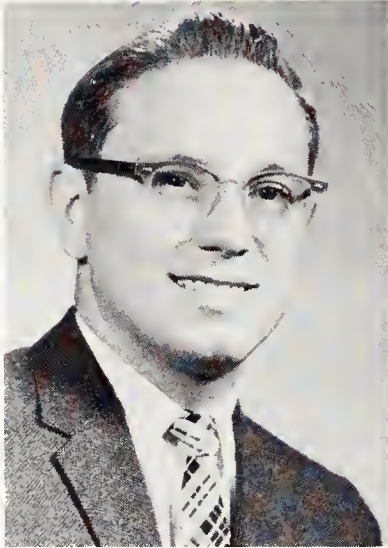
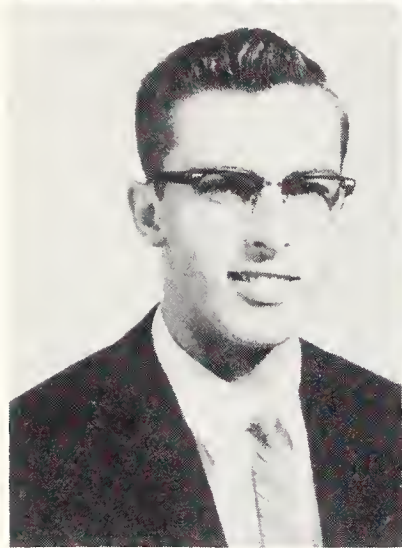


Class Officers: Jim Clauser, president; Neal Rettig, student council representative; Diane Miller, secretary; Dr. Edward Simpson, faculty adviser; and Jerry Cramer, vice-president.

THE JUNIOR CLASS

Class parties, chapel services, special lectures, and the reception for the seniors kept the junior class busy. Besides these in-school activities, many of the juniors, being grounded in the things of God, held positions of responsibility in the churches of the city.

Having come this far in their college career, the junior class looked forward to their last days of spiritual and mental training; for "No man having put his hand to the plow, and looking back, is fit for the kingdom of God."--Luke 9:62.



Torrey Barcanic
Ralph Brandenburg

Janice Bloomer
Larry Brincefield

Esther Bolles
R. Mark Campbell

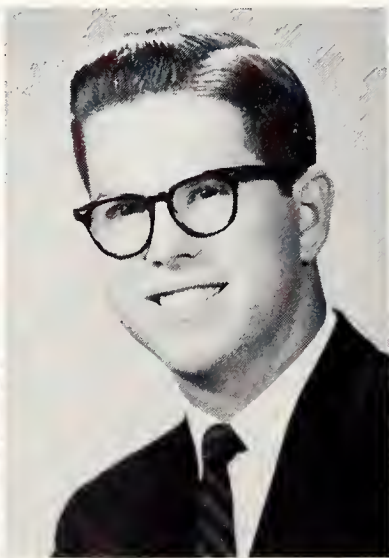
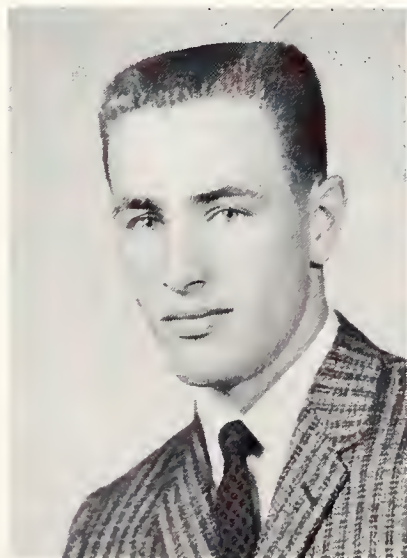
Norma Brandenburg
James Clauser

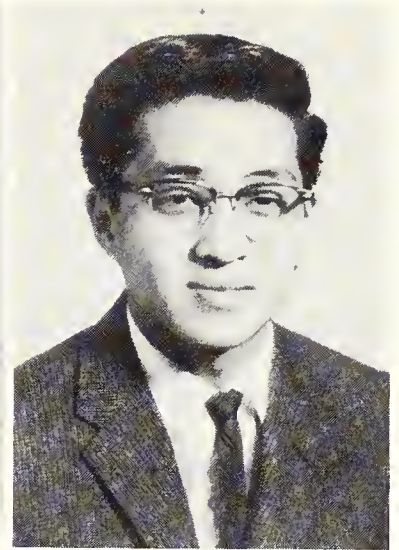
Jerry Cramer

Donald Gerig

Dorothy Hackney

Ernest Hayden





E. Ann Helmick
Paul Kulp

Anita Hoffman
Diane Miller

Kathleen Jacobsen
Judith Montei

Stanley Kobayashi
Ellen Pedersen

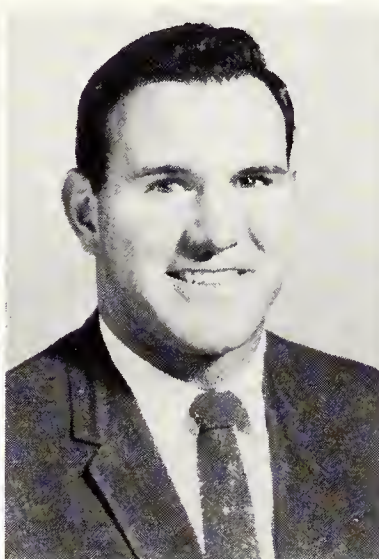
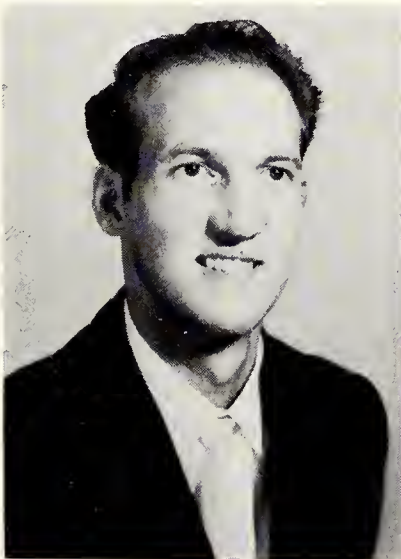
THE JUNIOR CLASS

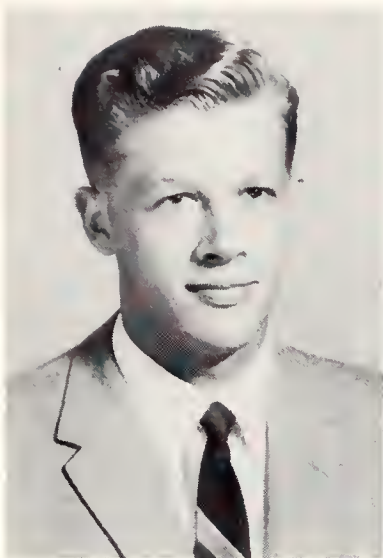
Daryl Platt

Neal Rettig

Donald Rice

Marilyn Samrady





Gale Sherman



Steve Sprunger



John Trusdle



Arlene Zabel

THE JUNIOR CLASS

Mark Campbell inspects the junior display for Alumni Day.



NOT PICTURED:

- Faye Adams
- R. Gene Bertolet
- Larry Cadaret
- Clarence Eash
- Charles Elliott
- Harold Hatcher
- Marie Kelley
- James Line
- Ronald Maser
- Earl Messick
- Shirley Swallow
- Edwin Terui



Class Officers: Bob Wheat, president; Gary Inouye, treasurer; Carol Hughs, secretary; Ron Sonius, chaplain; Martha Brown, vice-president; Mr. Stanley Leonard, faculty adviser.

THE PRE-JUNIOR CLASS

Future schoolteachers comprised the larger part of the pre-junior class, since the majority of students in a five-year program are education majors.

The desire to become top Christian teachers led to unified group work on the projects the class undertook. Fellow-

ship was greatest early in the year when the pre-juniors constructed an elaborate homecoming display--a sign of artificial red and white roses, which read, "Jesus, Rose of Sharon." Other activities gave the relatively small class added opportunity to serve Christ through group work.



Martha Brown
Gary Inouye

Shirlee Burr
David Jacobson

Nancy Fetter
Mary Kable

Carol Hughs
Darlene Krause

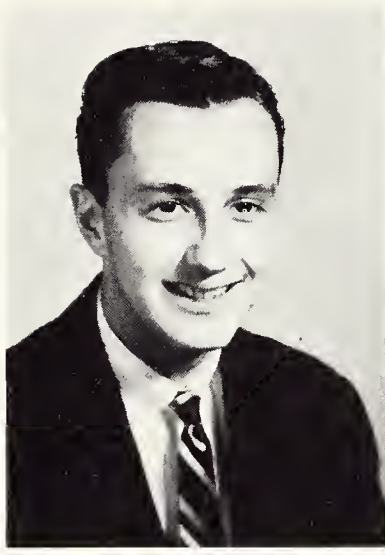
Monique Lefebvre

Lynnette Leslie

Elaine Maggart

Shirley Murry





Judy Nesseth
Edward Podlesak

Lorene Neuenschwander
Vincent Rupp

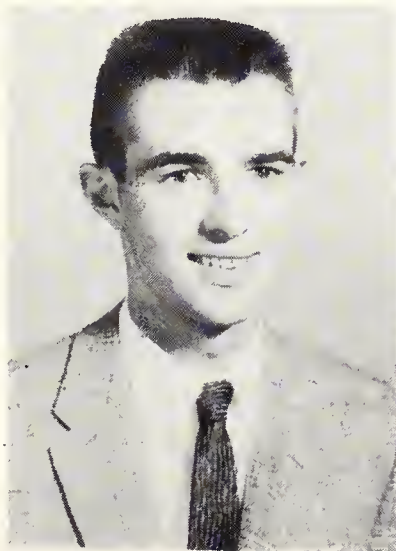
Robert Neuenschwander
James Shockney

Mary Jane Perry
Barbara Sprunger

THE PRE-JUNIOR CLASS

Robert Wheat

Merrell Wheeler



NOT PICTURED:

Ann Applegate
Virginia Cadaret
Neva Hirschy
Eileen Vorse
Lois Williamson

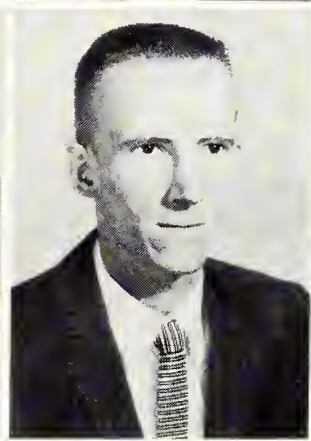
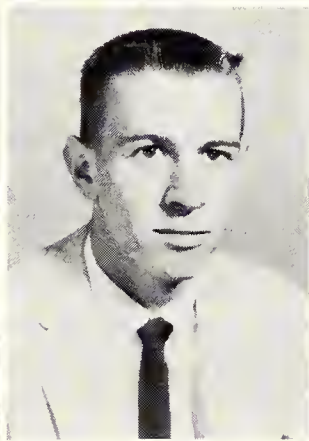
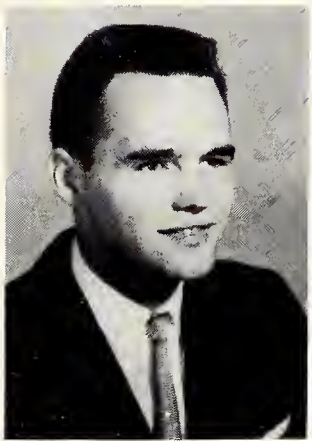
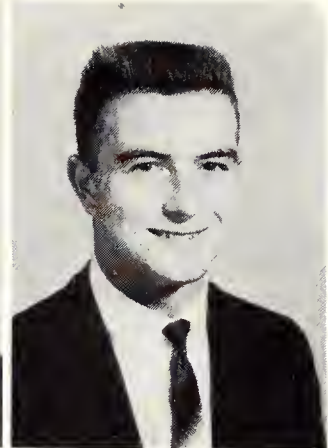
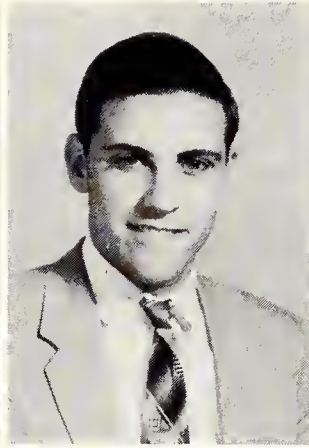


Class Officers: Duane Ford, vice-president; Don Dowdy, chaplain; Dr. Frances Simpson, faculty adviser; Marilyn Dissinger, secretary; Jim Kipp, treasurer; Arlan Birkey, president.

THE SOPHOMORE CLASS

As soldiers of Christ, the sophomore class chose the motto, "More than Conquerors." Their emblem, a cross and sword on a shield, served to remind them of some of the necessities of a Christian life--the shield of faith and the sword of the Spirit, which is the Word of God.

Among the activities of the sophomore class this year was the presentation of a chapel program. Musical numbers, readings, and slides of well-known paintings of Christ illustrated the greatest theme of all ages, "The Love of God."



Donna Akers
Joseph Bokel

Claudia Bell
Vonda Bollinger

William Beougher
John Bristol

Arlan Birkey
Philip Buchanan

Vernon Blue
Sharon Butcher

THE SOPHOMORE CLASS

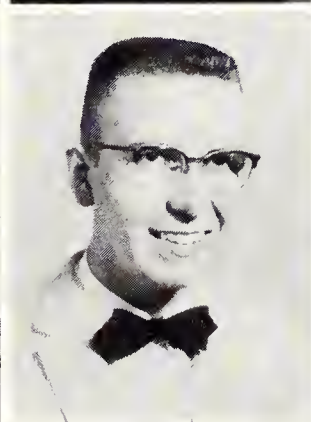
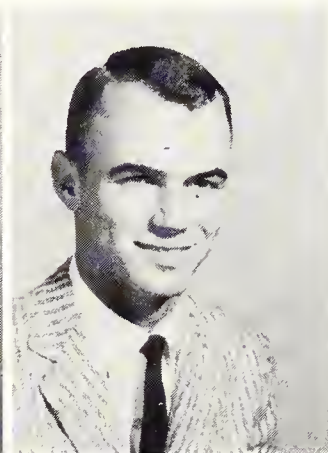
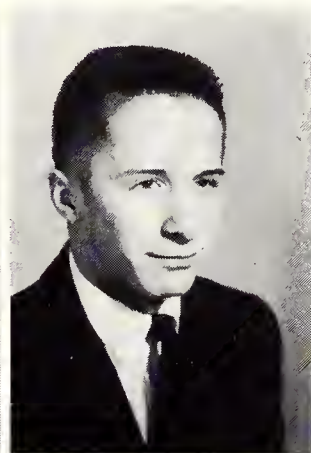
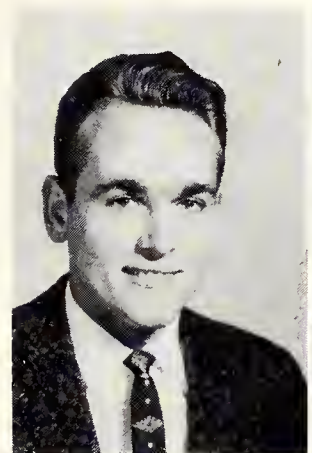
Larry Cantrell
Duane Ford

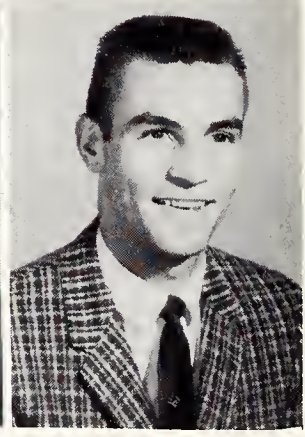
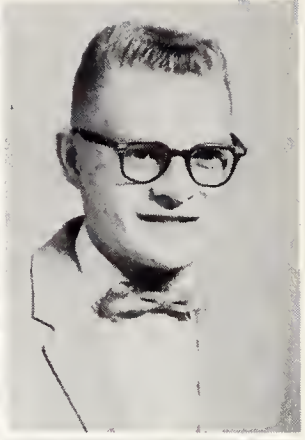
Cora Caswell
Mary George

Marilyn Dissinger
Harry Gilpin

Donald Dowdy
James Gordon

Donald Dyck
Hugh Gushiken





Philip Hatmaker
David Klopfenstein

Ruth Hennessee
Beatrice Kranich

DeLayne Hirschy
Ruth Landes

Roberta Huisman
Mary Lupton

James Johnson
Paul Mays

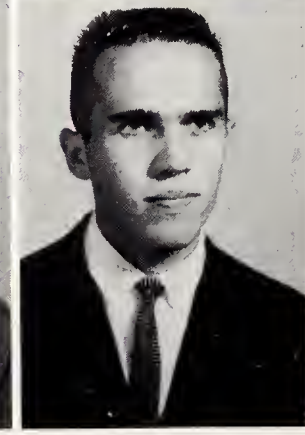
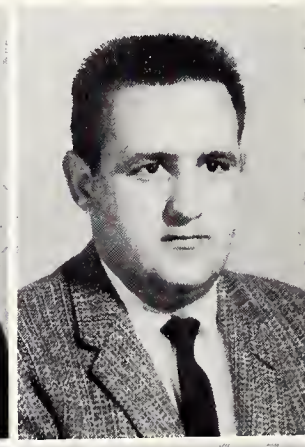
Tamara Morley
William Raines

Linda Mosier
Marilyn Reichard

Wilbert Neuenschwander
Lois Robbins

Janice Olson
Louise Sackett

Robert Perry
Robert Shannon





Dwight Sholl
Judith Truit

John Steiner
Charlotte Valentie

Virginia Sumser
Alice Joy Weddle

Raymond Tabuchi
William Wesner

Jane Tao
Helen Wolfe

THE SOPHOMORE CLASS

Mary Zeiter
Mae Zigler



NOT PICTURED:

Nancy Cash
Charles Davis
James Ebersole
James Fassler
Frank Graber
Lowell Halbert
Carolyn Hankey
Forrest Hayes
Sherril Holden
Harry McCrum
Gloria Nishihara
Judith Persons
Phillip Rice
Beulah Wilkin

Mary Lupton and Don Dowdy realize there is more to college life than studies.





Class Officers: Mr. Oswald Morley, faculty adviser; Judy Baker, student council representative; Alan Siebert, chaplain; Peggy Allen, vice-president; Phil Gerber, treasurer; Betty Campbell, secretary; and David Dyck, president.

THE FRESHMAN CLASS

Through their first year, the freshman class faced many new situations and experiences which they had to learn to handle; but needs were met and victories were won for Christ.

The first activity the freshmen participated in was the all-school picnic, where they were given a chance to meet

many students and were challenged through a devotional period conducted by Mr. Stanley Leonard. Other projects such as the homecoming display they erected and the chapel program they presented helped them develop interest in academic, social, and spiritual things.



Peggy Allen
Judy Baker

Carolyn Amstutz
Ruth Baughman

Elaine Armstrong
Karl Bell

LaMonte Armstrong
David Berggren

George Ashley
Eleanor Berry

THE FRESHMAN CLASS

Shirley Berty
Nancy Brown

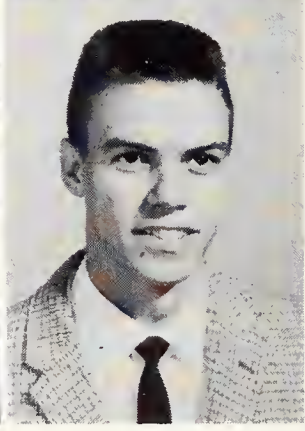
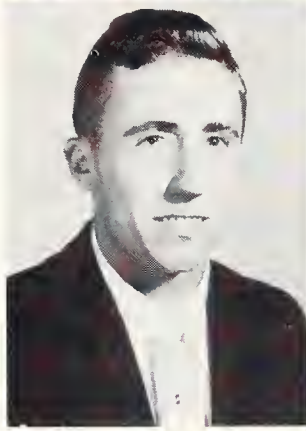
Stephen Binkley
Joyce Butts

James Blomquist
Cynthiann Byerly

Georges Bretz
Heather Cameron

Nancy Brooks
Elizabeth Campbell





Mary Cantrell
Warren Crawfis

Carolyn Clappe
Deanna Day

Eileen Clark
Judy Day

Sarah Cooney
Bonnie Deason

Janet Copley
David Dyck

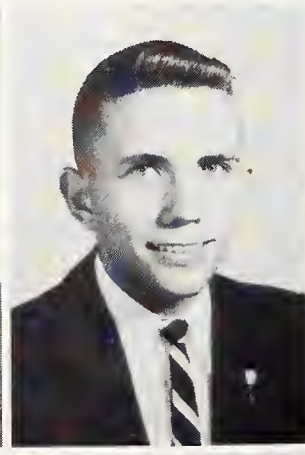
Sandra Dye
Patricia Fowler

Richard Dyke
Phillis Freeman

Sharon Ebersole
Philip Gerber

Wendell Eicher
Gary Griffis

Carolyn Ewert
Dolores Hake





Judith Hall
Karen Heffner

Pauline Harnden
Kathryn Hoak

Carolyn Harris
Claire Hontz

Janyce Harris
Frances Horton

Glenda Hebblethwaite
Naomi Kaneshiro

THE FRESHMAN CLASS

Naomi Kerlin
Anita Laymon

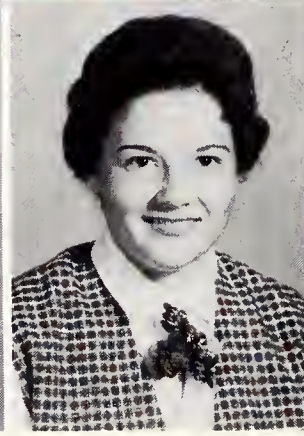
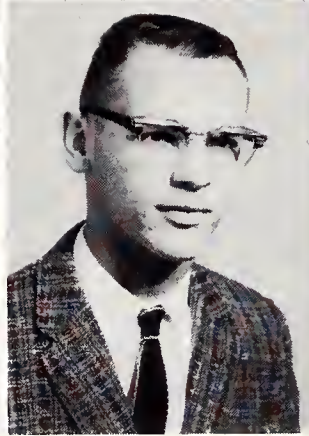
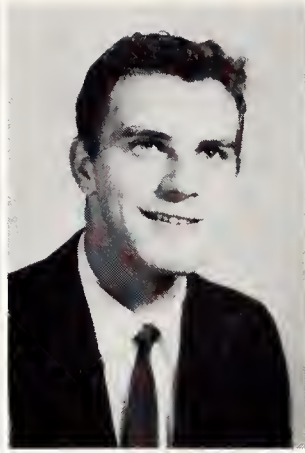
John Kitchen
Juliann Leas

Joyce Kleinhen
Anna Mae Lehman

Ronald Kolibob
Marilyn Lehmann

Karin Lantz
Kathleen Line





Judith Lumsden
Mary Masterson

Dorilda Lyman
John McAhren

Alan Magnuson
Cecelia McCrea

Jo Ann Martin
Charlotte McDonald

Marlene Maser
Robert McQueen

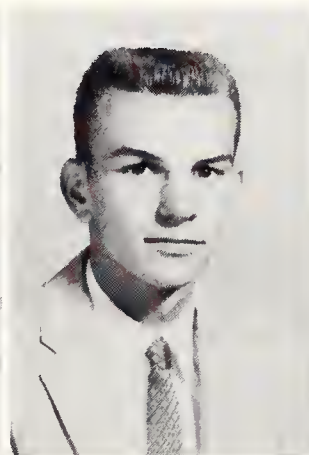
Vivian Mead
Grant Osborne

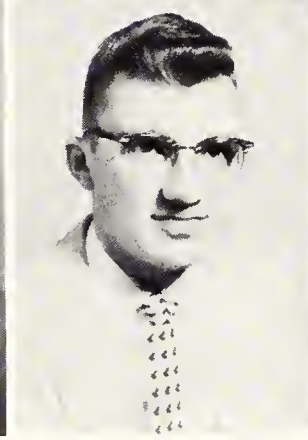
Roy Meyer
Judith Parson

Charlotte Miller
John Pierce

Norma Moser
Virginia Potts

Doris Niswander
Richard Price





Kathleen Prochaska
Saaron Robbins

Carmen Pusey
Carol Schifferly

Dilasie Ramlal
Patricia Schultz

Helene Rebsamen
Duane Seiple

Eva Rice
Alan Siebert

THE FRESHMAN CLASS

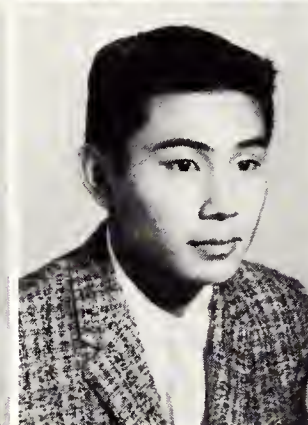
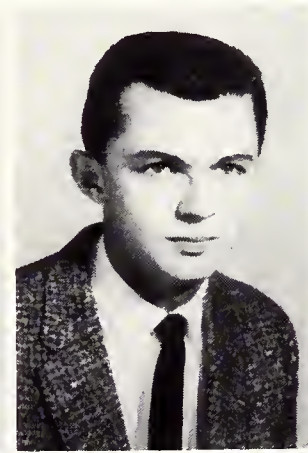
Betty Smith
Dale Stout

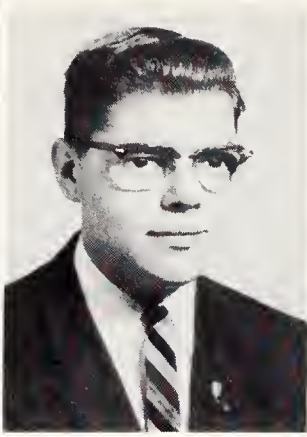
Priscilla Smith
Lois Stubbs

Ruth Stauffer
B. Joy Sutton

Duane Steiner
Glen Terui

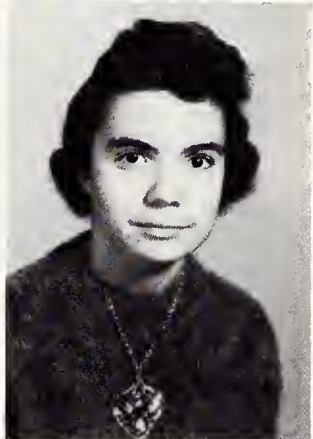
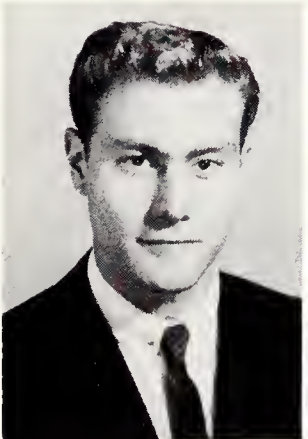
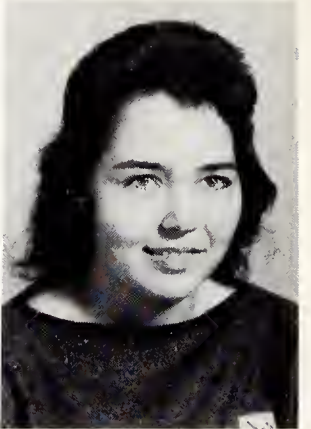
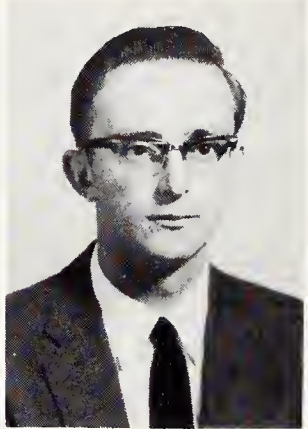
Margaret Steiner
Erika Tetzlaff





Sandra Tucker
Lawrence Uezen
Calvin Waugh

Ruth Whitworth
George Wiggin
Lorraine Wingrove



Donald Zimmerman
Sharon Zimmerman
W. Sharon Zimmerman

THE FRESHMAN CLASS

Cooperation is the keynote to success!

NOT PICTURED:

- Larry Born
- Calvin Bourn
- Dale Burks
- Maurice Marquart



NURSES



Janet Cochran

Mary Alice Cousins

Nurses receive training at Lutheran Hospital.



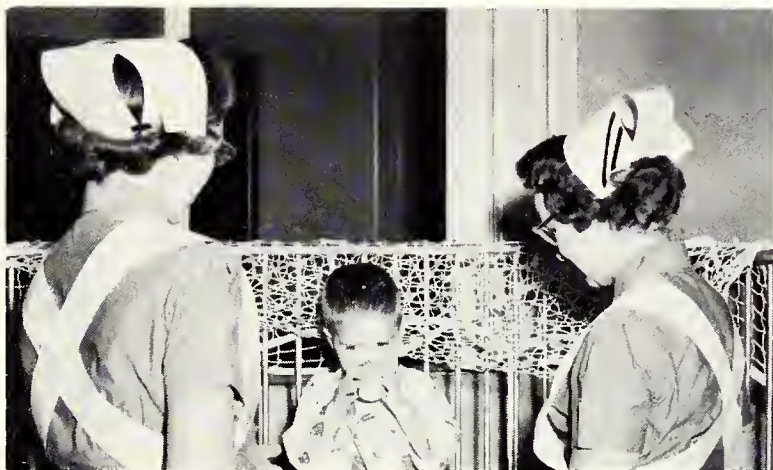
Judy Flick

Donna Grubb

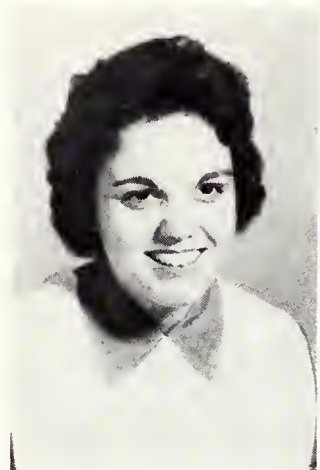
Wahnetta Hamman

Patricia Rice

Phillis Rice



Donna Grubb and Pat Rice assist a young patient.



Margaret Shady

Eunice Simmons

"...Verily I say unto you, Inasmuch as ye have done it unto one of the least of these my brethren, ye have done it unto me."--Matthew 25:40.

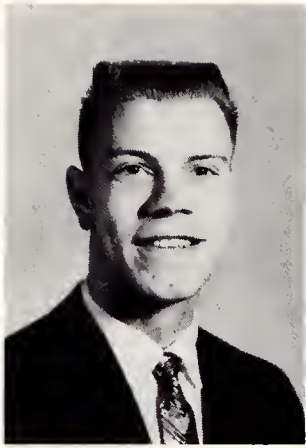
Thirteen of our women students have given practical meaning to this verse this past year in the field of nursing. These registered nurses, studying for their degree of Bachelor of Science in Missionary Nursing, were engaged either full- or part-time in the various phases of the nursing profession. Donna Burd, Carolyn Derreth, Carol McFarland, Elizabeth Furman, Dorothy Martin, Ruth Moser, Nancy Sinn, Evelyn Waller, and Carol Watters worked as staff nurses

at the Lutheran Hospital; Joyce Gerig worked as an obstetric nurse at St. Joseph Hospital; Yvonne Johnson worked as an office nurse for Dr. Taylor; Janet Miller worked as a psychiatric nurse at the Fort Wayne State School; and Alice Blodgett, a missionary on furlough from Sierra Leone, Africa, was busy doing duputation work.

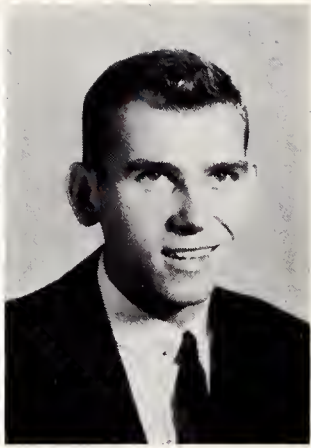
Ten students from our college were in training at Lutheran Hospital: Mary Alice Cousins, Judy Flick, Wahnetta Hamman, Phillis Rice, Margaret Shady, first year; Janet Cochran, second year; Donna Grubb, Lola Harmon, Patricia Rice, Eunice Simmons, third year.



Rosemarie Basel



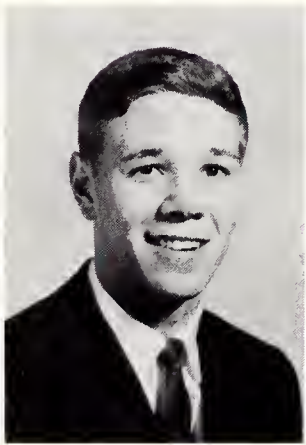
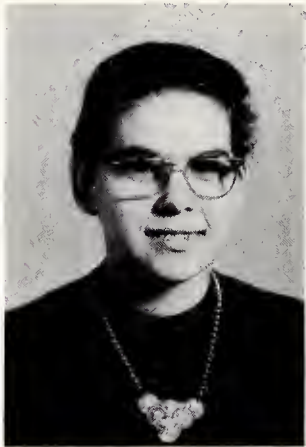
David Eicher



Lynn Fuelling

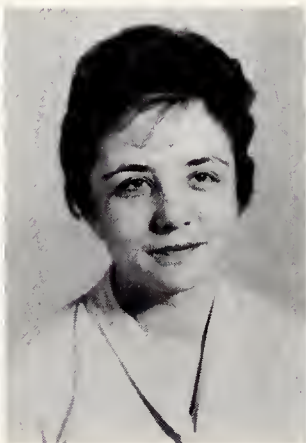
SECOND SEMESTER STUDENTS

Kathleen Hamilton
Barbara Howard
Edna Mae Mann
Ronald Morehead

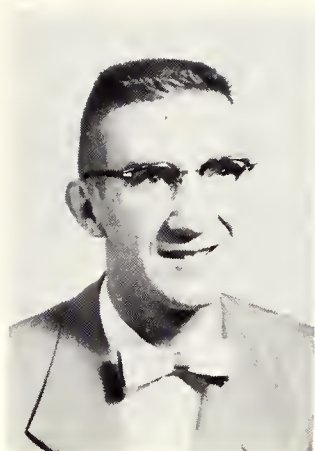


Zelda Pierson
Paul Ranes
David Rupp
Joyce Sarver

Nancy Schleigh
Dorothy White
William Williams



SPECIAL STUDENTS



Albert Bell



Mary Gudeman



Gilbert Hoefakker



James Kipp
Donna Leonard
Alverna Messick

Karen Messick
Ronald Miller
Florence Weaver



F.W.B.C. students express their support at the convention of the National Sunday School Association in St. Louis.



Spiritual



Get but the truth once uttered,
and 't is like
A star new-born, that drops into its place,
And which, once circling in its placid
round,
Not all the tumult of the earth can shake.

--James Russell Lowell



Missionary Conference - Dr. Dick Hillis, speaker; Mr. Norman Nelson, vocalist.

SMF

Reaching the lost is the goal promoted by the Student Missionary Fellowship, whose membership includes the entire student body.

SMF presents a chapel service every other Friday morning and a challenging evening service on alternating Friday nights.

During the first week in November, SMF sponsored the annual Missionary Conference with Dr. Dick Hillis of Orient Crusades as the principle speaker. Dr. Hillis was assisted by the Reverend Norman Nelson, a very

capable vocalist using his talents to further the gospel in the Philippine Islands. The conference proved to be a time of real spiritual blessing and illumination.

SMF also partially supports three missionaries with weekly offerings and pledges from students: Miss Florence Cavender in South America, Mrs. Arthur Hall in Jamaica, and Mrs. Ronald Sonius in British West Africa.



Prayer Band Leaders: Jim Johnson, Kathryn Hoak, Mark Campbell, Charlotte Miller, and Warren Crawfis.



SMF Ushers: Robert Shannon, Larry Cantrell, Duane Ford, head usher; William Beougher, and Donald Zimmerman.



SMF Male Ensemble: Ronald Sonius, Donald Dowdy, Donald Dyck, Jerry Cramer, Dale Burks, David Dyck, Duane Steiner, Grant Osborne, Torrey Barcanic, Robert Neuschwander, and Larry Eicher, director.



SMF Officers: Dave Shady, vice-president; Larry Eicher, chorister; Elaine Voss, secretary; Mr. Timothy Warner, adviser; Rachel Morris, publicity director; Bill Gerig, president; and Robert Wheat, treasurer.

SPIRITUAL EMPHASIS WEEK

Upper, The Rev. Gordon Wishart
Lower, Dr. J. A. Bandy



"If you can't tell people at home about the Lord Jesus, then we don't need you on the mission field." This is just one of the many startling statements that the Reverend Gordon Wishart of Ottawa, Canada, made during the first semester Spiritual Emphasis Week. As he told the reasons for the failure of several missionary candidates, many students realized that the seeds of those very same failures had already taken root in their own lives; many made renewed dedications to the Lord and to His work.

Dr. J. A. Bandy of the Toccoa Falls Bible College, Toccoa Falls, Georgia, delivered inspiring messages during the second semester services. May the decisions made during these weeks live on in our hearts and provide future inspiration to go on with the Lord.

YOUTH CONFERENCE

LOOKING FORWARD



Donald Gerig, Chairman

The college campus came alive with activity as crowds of young people arrived to attend the annual Youth Conference, April 28 through 30. This year those who attended heard messages and special music based on the theme, "Looking Forward."

The principle speaker, Dr. Richard H. Harvey, was chosen for his work with youth and for his notable service as one of the founders of Youth for Christ International. Dr. Harvey's ministry during this exciting week-end stirred the hearts of students as well as guests.



Dr. Richard Harvey



Upper, YOUTH CONFERENCE COMMITTEE: Mr. Wesley Gerig, Elaine Neiman, Donald Gerig, Ronald Maser, Lynnette Leslie, Miss Carolyn Pocock, Paul DeMerchant, and Shirley Burr.

Lower, YOUTH CONFERENCE ENSEMBLE: Men, left to right: Torrey Barcanic, Robert Shannon, Arlan Birkey, Steve Sprunger, James Clauser. Women, left to right: Elaine Neiman, director; Kathleen Line, Judy Day, Ruth Landes, Elaine Armstrong, and Arlene Zabel.



Students checking off their numbers as they enter chapel.

CHAPEL

"Draw nigh to God, and he will draw nigh to you." Chapel is the time we set aside daily amidst busy schedules to draw nigh unto God. Some chapel speakers include local pastors, evangelists, representatives from various Christian organizations, missionaries, and faculty members. Some chapel services are spent in testimony periods, and others are sponsored by various classes and school organizations.

Once a month, the entire morning is devoted to an extended chapel period of prayer and worship called "Day of Prayer." At this time many hearts are uplifted, and all of us are encouraged and challenged to be more effective in our Christian life and witness.



The Rev. Dean A. Dalton and the Rev. DeLos Holmes, Gospel Light Publications representatives, discuss last-minute details before chapel begins.



Stanley Leonard and Grant Hoatson record a faculty interview.

CROSSROADS

"Hail, Fort Wayne Bible College..." The Alma Mater announces Crossroads, a twenty-five minute program broadcast on radio station WOWO every Sunday morning at 7:05. Each program consists of musical numbers by the Crossroads Ensemble, directed by Ira Gerig; interviews of students, faculty, and special guests; a special musical presentation by some group other than the ensemble; and a short talk by a professor of the college.

During the summer, Crossroads featured Dr. Edward Simpson with an outstanding series of studies on the Sunday School lessons.

It is the prayer of those on the staff of Crossroads that someone may come face to face with Christ because they have heard His word on this program.



Upper left, Technicians Bill Gerig and Grant Hoatson stand by as a Crossroads program is about to begin.

Upper right, Larry Eicher, organist.

Lower, CROSSROADS ENSEMBLE: Men, left to right: William Gerig, Vernon Blue, Robert Neuenschwander, James Clauser, Philip Hatmaker, Mr. Ira Gerig, director. Women, left to right; Ruth Landes, Anita Laymon, Shirley Murry, Judy Nesselth, Nancy Sinn, and Sharon Robbins.

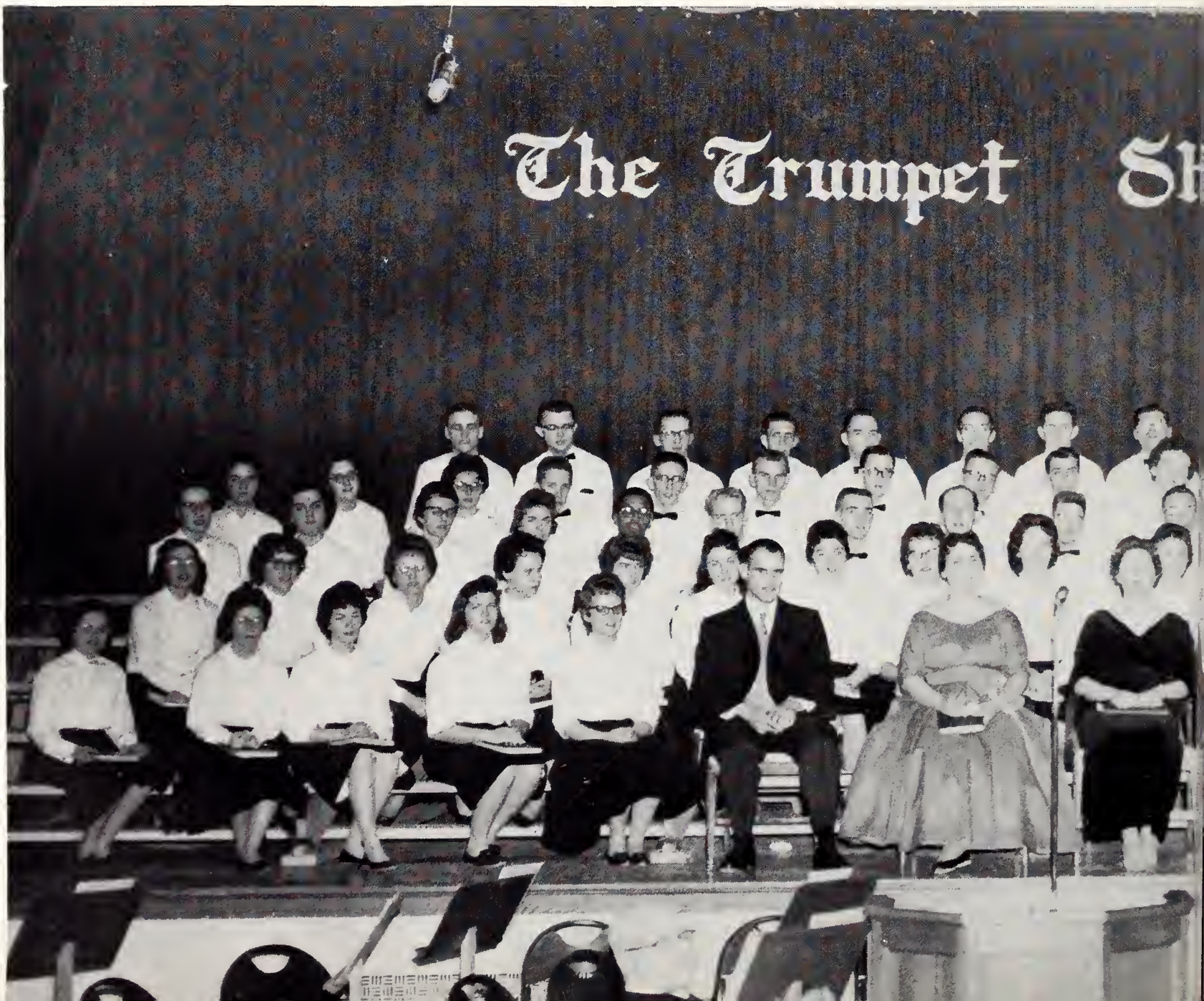


Dolores Hake, accompanist

ORATORIO

During the month of December, the Oratorio chorus presented Handel's "Messiah." Any student desiring to sing praises unto God may take part in this organization. Officers are elected by students of the chorus.

The chorus, composed of eighty voices; the twenty-two piece orchestra; and the guest soloists were under the direction of Mr. Richard Elmer, a new addition to the college faculty. Mr. Woodward Henry, Tenor; Miss Harriet Whonsetler, soprano; Mrs. Margaret Weber, contralto; and Dr. Ralph Appelman, bass, were the soloists for the presentation.





Mr. Elmer directing one of the many Oratorio rehearsals.



Oratorio Officers: Wendell Eicher, librarian; Duane Steiner, librarian; Peggy Allen, secretary; Larry Eicher, president; Miss Carolyn Pocock, accompanist.



Following the presentation the chorus and soloists enjoy singing Christmas carols while pictures are being taken.



Fourth Row: Robert Wheat, Robert Shannon, Jerry Cramer, Torrey Barcanic, Larry Eicher, Roy Clauser. Third Row: Peggy Allen, Deanna Day, Ruth Hennessee, Hanni Feurer, Robert Neuenschwan-Zabel, Shirley Murry. Second Row: Kathleen Line, Carol Hughs, Dolores Hake, Elaine Armstrong, in Lantz, Gretchen Gallagher, Diane Miller. First Row: Heather Cameron, Sharon Robbins, Carol Dorothy Martin, Carolyn Ewert, Elaine Neiman, Betty Smith, Judith Truit, Mary Lupton.

A CAPPELLA CHOIR

Mr. Richard Elmer, director





Meyer, Arlan Birkey, Joseph Bokel, David Dyck, Duane Steiner, Grant Osborne, Vincent Rupp, James der, John Pierce, Wendell Eicher, Donald Dowdy, Jesse Adams, Judy Nesseth, Judith Montei, Arlene Mary Masterson, Naomi Kerlin, Vivian Mead, Dorothy Hackney, Elizabeth Campbell, Nancy Sinn, Kar-McFarland, Ellen Pedersen, Marilyn Dissinger, Eleanor Berry, Mary Cantrell, Anna Mae Lehman,

The A Cappella Choir is open for membership to those students who qualify through a personal interview and tryout with the director. This year, for the first time, there were several alternates who participated in all concerts in the Fort Wayne area; they were especially needed in the Spring Concert which required a greater number of members than the tour required.

The purpose of the choir is "to present the glories of God in song and word;" it provides the students with the opportunities to bear a Christian witness, to minis-

ter to the needs of men through sacred music, and to represent the Bible College to interested churches.

During Easter vacation the choir toured Ohio, Pennsylvania, Maryland, and Washington, D.C., and climaxed the trip with the home concert on April 9. The Spring Concert featured the cantata, "Rejoice Beloved Christians" (Buxtehude).

The choir also performed during the Youth Conference and the graduation exercises.

CHRISTIAN SERVICE

"Training for Service and Service in Training" has been one of the prime goals of Fort Wayne Bible College since its founding. This year greater emphasis was given to this motto as the Christian Service Department was reorganized under the leadership of Miss Joy Gerig. An introductory class in Christian service was instituted, various practical classes were held to aid the student in his assignment,

and new forms were drawn up for the purpose of reporting the Christian service activities of each student. Observation and evaluation of the student's work was made as far as possible. Students were given practical experience in every phase of Sunday School teaching, Child Evangelism, youth work, gospel team ministry, and choral directing; also included were pastoral, mission, and jail work.

SUNDAY SCHOOL WORKERS

Third Row: William Raines, James Fassler, Ronald Morehead, Daryl Platt. Second Row: Jesse Adams, Shirlee Burr, Elaine Voss, Gail Horrocks. First Row: Louise Sackett, Neva Hirschy, Lorene Neuenschwander, Sharon Butcher.





William Shoot, Elaine Maggart, William Beougher, Gretchen Gallagher, James Clauser, Mary Kable, Duane Steiner, Grant Osborne, Shirley Swallow, Gary Griffis, Betty Smith, Joseph Bokel, Duane Seiple, Larry Eicher, Phyllis Scholfield, Daryl Platt, Elaine Neiman, Donald Dowdy.

CHURCH MUSIC WORKERS CHILDREN'S WORKERS

Standing: Crystel Hafer, Carol Hughs, Louise Sackett, Ethan Mazaraki, Esther Bolles, Sherril Holden, Barbara Sprunger, Daryl Platt, Lynnette Leslie, Dortha Onstott, Carolyn Derreth, Duane Ford, Marilyn Reichard, Linda Mosier. Seated: Gail Mazaraki, Carol Watters, Carolyn Perry, Phyllis Scholfield, Evelyn Waller, Dorothy Joherl, Helen Wolfe.



GOSPEL TEAMS

Three Notes of Praise: Carol McFarland, Dorothy Martin, Rachel Morris.



Evangelaires: Diane Miller, Judy Nesseth, Shirley Murry, Nancy Sinn.



Envoys: John Steiner, Jerry Cramer, Donald Dyck, Paul DeMerchant, Robert Neuenschwander.



Keiklanis: Gary Inouye, Hugh Gushiken, Gloria Nishihara, Edwin Terui, Jane Tao, Raymond Tabuchi, Naomi Kaneshiro, Glen Terui, Stanley Kobayashi; Eleanor Berry, pianist.



Grace Notes: Elaine Armstrong, Marilyn Dissinger, Mary Lupton.



Standing: Janice Bloomer, Mary Zeiter, Anita Hoffman, Dortha Onstott, Judy Nesseth, Arlene Zabel, Shirley Murry, Janice Oleson. Seated: Sharon Butcher, Dorothy Hackney, Virginia Sumser, Diane Miller, Carolyn Derreth, Nancy Sinn.



COUNSELORS

Eleanor Berry is counseled by Dortha Onstott.

Diane Miller, Virginia Sumser, and Sharon Butcher are given some counseling helps by Mrs. Hoatson.



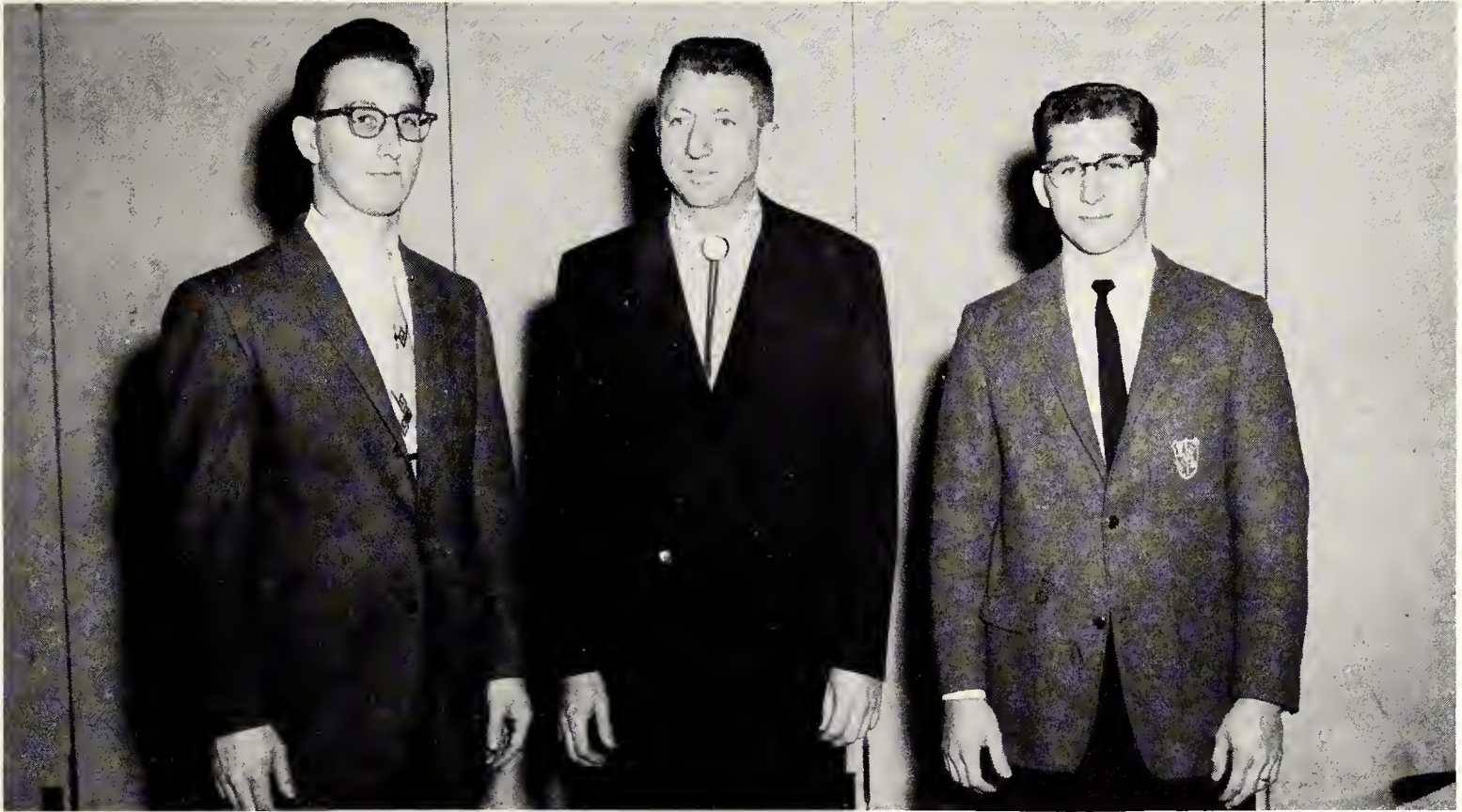


Judy Thompson, Vincent Rupp, Anita Hoffman, Beatrice Kranich, Philip Hatmaker, Lorraine Wingrove.

CHILD EVANGELISM WORKERS YOUTH WORKERS

Standing: Robert Shannon, Robert Wheat, William Raines, Joseph Bokel, Grant Osborne, Neal Rettig, Ronald Maser. Seated: Edward Podlesak, Phyllis Scholfield, Arlene Zabel, Vonda Bollinger, Jesse Adams.





David Jacobson, James Shockney, James Line.

STUDENT PASTORS

MISSION WORKERS

Jesse Adams, Arlan Birkey, James Johnson, Mark Campbell, Lynn Bowman, Duane Steiner, Larry Cantrell, Elizabeth Campbell.





Social



Think truly, and thy thoughts
• Shall the world's famine feed.
Speak truly, and each word of thine
Shall be a fruitful seed.
Live truly, and thy life shall be
A great and noble creed.

--Horatius Bonar



PI LAMBDA ZETA

Mr. Bill Harold answers questions regarding the Fort Wayne Civic Play House.

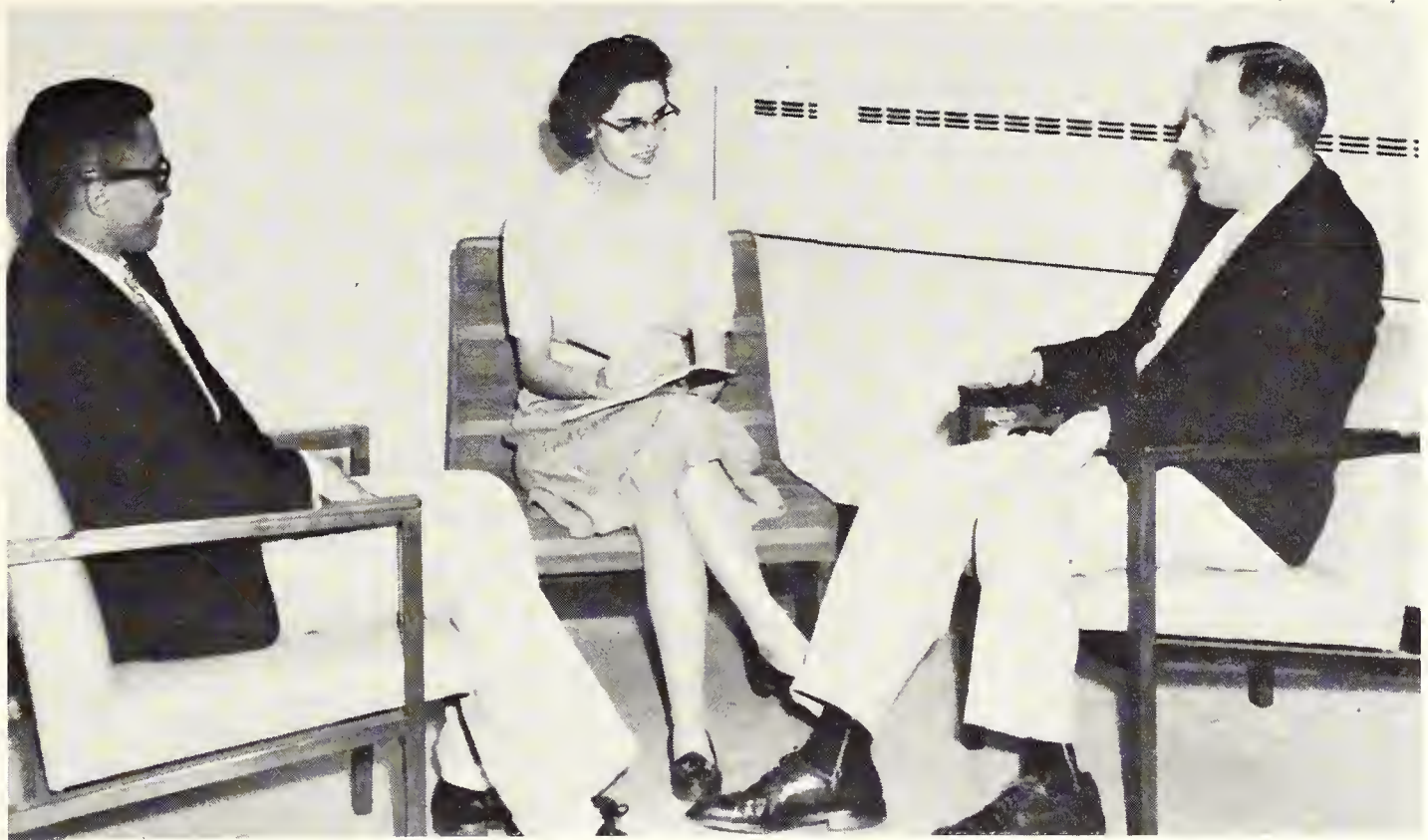
Pi Lambda Zeta, "making words come alive," was organized in the fall of 1958 for the following purposes: to relate speech to the life's work of each member, to promote speech and drama to the student body, to provide fellowship for those interested in speech, and to provide experience in speaking for the participating members.

Membership is open to anyone who mani-

festes a strong interest. Pi Lambda Zeta attempts to make the meetings educational in various speech areas without putting a burden of preparation upon individual members. This year two of the activities included a speaker, Mr. Bill Harold, from the Fort Wayne Civic Play House and a visit to Grace Theological Seminary to hear and see a Bible-character impersonator.

Pi Lambda Zeta Officers: Vincent Rupp, president; Joyce Butts, secretary-treasurer; Miss Dorothy West, adviser; Donald Dowdy, vice-president. Not Pictured: Bonnie Deason, parliamentarian.





Alpha Kappa Club Officers: Jesse Adams, president; Pat Hartung, secretary-treasurer; Mr. Wesley Gerig, faculty adviser. Not pictured: Morris Jacobsen, vice-president.

ALPHA KAPPA CLUB

The Greek letter alpha denotes academic achievement; the kappa stands for preaching; the two letters together denote the development of expression in expounding the Word of God, and it is from them that the Alpha Kappa Club derives its name. Its two objectives are to develop an ability to understand and to use the Greek New Testament and to provide spiritual, academic, and social activity.

At each meeting a member presented a New Testament passage from the Greek. At the Christmas party the club had an enjoyable evening playing games which required the use of Greek words. A Greek banquet was held in February. As an annual project the club presented an award of \$25 for the best Greek exposition of the year.



Alpha Kappa Club Members: Mr. Wesley Gerig, Jesse Adams, Arlan Birkey, Larry Cantrell, James Fassler, Dortha Onstott, Judy Thompson, Monique Lefebvre, Patricia Hartung, Robert Wheat, Paul DeMerchant.



Music Club Officers: Mary Kable, secretary; Ellen Pedersen, president; Dr. Rene Frank, faculty adviser; William Shoot, vice-president; Donald Dowdy, treasurer.

MUSIC CLUB

The Music Club can boast of having some of the most talented students as its members. Membership is not restricted and is open to all students that are music lovers and like good fun and fellowship.

Meetings are monthly and are held in

faculty homes as well as on campus. Some of the club's activities included a presentation of types of music found on the mission field, a Valentine Party, and a field trip to the Conn Music instrument factory.

Jim Clauser captivates the interest of Music Club members.





Camera Club excursion.



"Look at the birdie."

CAMERA CLUB

Camera Club was organized for the purpose of glorifying God through photography-- by the study of techniques, the development of skills, and the study of ways to use them for the Lord.

The Camera Club sponsored an afternoon field trip to the Bluffton Game Reserve, darkroom work in Shultz Hall, and its annual all-day field trip. A new development for the Camera Club this year was the processing and printing of colored film.

Camera Club Officers: Mr. Forest Weddle, faculty adviser; Carolyn Hankey, secretary; Joseph Bokel, president; Raymond Tabuchi, treasurer. Not Pictured: Larry Cadaret, vice-president.





LIGHT TOWER

Gail Horrocks, managing editor; Miss Eunice Conrad, faculty adviser.



Literary staff: Gail Mazaraki; Donald Dowdy; Alice Joy Weddle, editor.



Photographers: Joseph Bokel, Warren Crawfis.



Layout assistants: Alice Joy Weddle, Vincent Rupp.



Typists: Dorothy Joherl, Marilyn Samrady.



Portrait committee: Marilyn Samrady, Judith Truit.



Artist: Gene Bertolet.



Class editors: Rachel Morris, senior; Georges Bretz, freshman; Carol Watters, nurse; Orville Roach, senior; Cora Caswell, sophomore; Vincent Rupp, pre-junior.



Jesse Adams, circulation manager; David Jacobson, advertising manager.

For over seven months the Light Tower staff worked feverishly on organizing and publishing the yearbook. The first month brought forth the theme "The Truth Shall Set You Free," then ideas for pictures and copy began to form.

The staff busied themselves with matching photos and names, and photographers hurried about taking those pictures that are worth a thousand words.

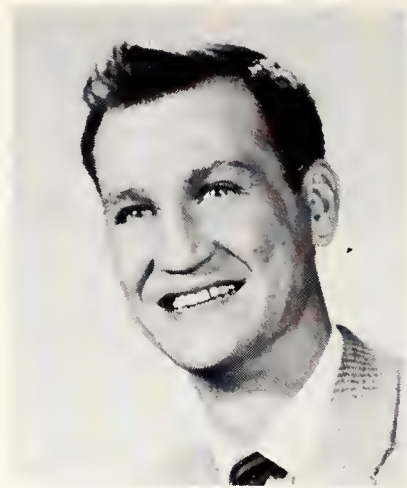
The editor learned the true meaning of frustration as problems arose and the hours till deadline rushed onward. Finally, amid the sighs of the staff, the last page of the 1961 Light Tower was completed and rushed to the post office to be sent to the publisher.



Mr. Harold Ranes, faculty adviser; Jerry Cramer, chairman.

BAND

Mr. Robert Myers, director



Second Row: Sandra Tucker, Elaine Neiman, Mary Masterson, Edward Podlesak, Ellen Pedersen, Carrol Bley, David Dyck, William Gerig, Dale Stout, Mary Kable. First Row: Doris Niswander, Vivian Mead, Gretchen Gallagher, Carolyn Clappe, David Jacobson, Wendell Eicher.



Bands are almost an American tradition, and so the Bible College looks with pride upon the group of zestful musicians who form our band. Under the capable direction of Mr. Robert Myers, the college band gave enthusiastic support at pep rallies and basketball games and presented a concert during the spring.

Of course every band has to have rehearsals and this band was no exception. Everyone practiced hard and inevitably . . . members laughed heartily when blunders were made.



The intramural program at F.W.B.C. has been helpful this past year in the following ways: in giving opportunities for recreational activities organized on a competitive basis, in creating an atmosphere of social activities in the realm of recreation, in developing Christian character through competition and cooperation, and in helping the students to make proper use of leisure time.

The student body was divided into six groups; each group had a captain and co-captain who were responsible for the participation of their own groups in the program. This group of leaders with Coach Morley and Miss Rich composed the Intramural Council.

Some of the sports included in this year's program were: tennis, golf, badminton, football, basketball, softball, table tennis, volleyball, track, and swimming.



Cossacks vs. Trojans

INTRAMURAL

Intramural Council: Jesse Adams, Ann Helmick, Steve Sprunger, Monique Lefebvre, Paul Mays, May Zigler, Joseph Bokel, Marla Gustafson, James Johnson, Linda Mosier, Donald Dyck, Martha Brown, Coach Morley.





Olympians vs. Lancers



Carolyn Clappe, Margaret Steiner, JoAnn Martin, Mary Zeiter.

SPORTS



James Kipp, Grant Osborne, Jane Tao, Gloria Nishihara, Mary Lupton, Mary Zeiter, Karen Heffner.



Olympians vs. Trojans



Upper left: "Hit it over this way," says Tim Raney.

Upper right: Come on, Don, get it in.

Center left: Get that jump, Dave.

Center: No help from the opposition.

Center right: Two points for Meyer?

Lower left: Hey, Dale, this is no time for ballet.



Standing: Oswald Morley, Coach; Jerry Cramer, Manager; Philip Buchanan, Dale Burks, Roy Meyer, Timothy Ranes, Jesse Adams, Manager. Kneeling: John McAhren, Paul Mays, Donald Dyck, David Berggren, Mark Campbell, David Klopfenstein, James Blomquist.

VARSITY BASKETBALL

Under the leadership of Coach Morley, the team worked very hard this year, and they were steadfast in their Christian testimony on the basketball court.

Darlene Krause, Jim Clauser, Mae Zigler, Janet Copley, and Sharon Butcher lead the crowd in a rousing cheer for the team. Not Pictured: Cecelia McCrea.

Gee, at the moment it looks bad.





Booster Club Officers: Steve Sprunger, president; Monique Lefebvre, vice-president; Tamara Morley, secretary-treasurer; Miss Eleanor Rich and Mr. Oswald Morley, faculty advisers.

BOOSTER CLUB

The Booster Club was organized this year to create and maintain school spirit and to encourage attendance at basketball games. Membership is limited to fifty people who are received through application on a first-come, first-serve basis.

The club's activities have included

nine pep rallies; three send-offs; a bus trip to Bethel College, Mishawaka, Indiana; the entertainment of the Bethel pep club; the purchase of hose for the basketball team; and the advertising for all of the games. The Booster Club has proven to be a real asset to our sports program this year.



BOOSTER CLUB MEMBERS



CAMPUS CLEANUP





Student Council: Standing: Mr. Harold Ranes, Sharon Butcher, Jerry Cramer, Neal Rettig; Mark Campbell, Daryl Platt, Carolyn Derreth, Duane Ford, Mr. Cyril Eicher. Seated: Virginia Cadaret, Peggy Allen, Judy Baker, Martha Brown, Dorothy Martin, Shirlee Burr, Anita Hoffman, Mrs. Grant Hoatson.

STUDENT ASSOCIATION

Every member of the student body belongs to the Student Association which was set up to foster spiritual growth and fellowship, to assist in providing a well-rounded program of extra-curricular activities, and to provide student representatives to the campus government. Its main responsibilities include the promotion of student activities and the representation of student opinion to the faculty. The executive committee is composed of the president, vice-presi-

dent, secretary, and treasurer, who are elected by the student body, plus two representatives elected from each class.

This year the Student Association sponsored a campus cleanup, the blood mobile, the Christmas and Spring Banquets, a Halloween party, a special welcome to the guests on Alumni Day, and the furnishing of magazines for the student lounges. Its outstanding accomplishment was the organization of the Booster Club.



Bill Wesner and Joyce Butts render a duet at the Talent Show.



Seated at the guest table is Miss West, mistress of ceremonies, at the Christmas Banquet.



Dottie Hackney and Jan Bloomer "baby talk" to each other at the Talent Show.



A group of carolers at the Christmas Banquet.

Beauty and the beast.



Jim Clauser rakes with his radius.

COLLEGE

"I just got back from Mars."



Two tired misses on the way home from the Sunday School Convention.



Shakespeare or Bugs Bunny?





Get that bongo beat!



"Well, what would you do with him?"



"This typewriter is always making mistakes!"

LIFE



"Come on in and I'll give you a package of pills."

"I know he's in there!"



"But I just washed my feet!"

ADVERTISING

WE EXPRESS OUR SINCERE APPRECIATION TO THE FOLLOWING
WHOSE ADS APPEAR IN THIS SECTION

F.W.B.C. COLLEGE GROUPS

Junior Class
Pre-junior Class
Sophomore Class
Freshman Class
MCA Students Fellowship

CHURCHES AND ASSOCIATIONS

Christian and Missionary Alliance
First Brethren Church
First Missionary Church
Missionary Church Association
South Wayne E. U. B. Church

CHRISTIAN BOOKSTORES

Bible Truth Bookstore
Gospel Temple Bookshop

FORT WAYNE -- SHOPPING CENTER OF NORTHERN INDIANA

Brotherhood Mutual Insurance Co.
Coca Cola Bottling Co.
Doswell's Florists
Goller's Dry Cleaners
C. A. Grieger Co.
Hagerman Construction Corp.
Hall's Restaurants
Hobby House Restaurants
Menu Meats, Inc.

Minear Electric Co.
National Mill Supply, Inc.
Rolf Coal and Fuel Oil Corp.
Sunny Schick's
Schmidt Pharmacy
South Side Barber Shop
A. M. Strauss and Associates, Inc.
Troy Laundry
Waynedale Lumber and Supply Co.

HALL'S RESTAURANTS

No. 1, 1502 Bluffton	H-9443
No. 2, 1502 Bluffton	H-4267
No. 3, California Road	T-7015
No. 4, 4009 South Wayne Ave.	H-6173
No. 5, 2005 East State	E-4358
No. 6, 3005 Maumee	E-2037
Guest House	E-6248
Hot Food Delivery, 1502 Bluffton Rd.	H-4267
Eastend Restaurant, New Haven Ave.	E-7838

for the finest in food always . . .

"Ft. Wayne's Oldest Chevrolet Dealer"

C. A. GRIEGER CO.

130 E. Baker

Phone
A-0225 -SALES-PARTS-SERVICE

**A. M. STRAUSS AND
ASSOCIATES, INC.**

Strauss Building A-4207

Architect for New FWBC Library

STORE HOURS: 8 A.M. - 6 P.M.
SAT. 8 A.M. - 5 P.M.

**HAROLD A. HENRY
SOUTH SIDE BARBER SHOP**

4 CHAIRS
APPOINTMENTS HONORED
8 A.M. TO 3 P.M.
TUESDAY THROUGH FRIDAY
PHONE H-9502 3604 S. CALHOUN ST.

COMPLETE DRY CLEANING SERVICE

GOLLER'S DRY CLEANERS

608 E. Pontiac St. 4037 So. Wayne
H-2102 H-3364

SUNNY SCHICK'S

407 W. WASHINGTON A-9119

Fort Wayne's
friendly camera shop

Compliments of

NATIONAL MILL SUPPLY INC.

207 E. Columbia

Wiring by

MINEAR ELECTRIC COMPANY

**THE MCA
STUDENT FELLOWSHIP . . .**

Seeking to inform MYFers at FWBC
of the vision and convictions of
the Missionary Church Association . . .

Sincerely wishes God's best to the
graduating class of 1961

Fifty million times a day



DOSWELL'S

301 West Main

A-1183

Beautiful flowers
for all occasions---

We appreciate serving
Fort Wayne Bible College
for their laundry needs. . .

TROY LAUNDRY

1709-17 South Calhoun, Fort Wayne

MENU MEATS, INC.

2506 Broadway

HA-2275

Wholesale portion-controlled meats

When thinking of your menu. . . .

Think of us.



HEADQUARTERS
FOR
FIRE PLACE
FUELS

ROLF COAL & FUEL OIL CORP.

1702 FAIRFIELD AVE.
CALL H-2151

Compliments of

HAGERMAN CONSTRUCTION CORPORATION

"Builders of the New Library"

403 Strauss Bldg. E-4511

BROTHERHOOD MUTUAL INSURANCE CO.

1615 Vance Ave. Fort Wayne,
Indiana.



"Bear ye one another's bur-
dens and so fulfill the law
of Christ."--Gal. 6:2

PROPERTY INSURANCE FOR CHRISTIANS
Non-Smokers only!

Rated A+. We insure churches, Christian
schools, dwellings, household contents,
farms and mercantile--Never a court claim.
Christian agents wanted: Midwest states.

WAYNE DALE LUMBER AND SUPPLY COMPANY

LUMBER

Plywood - Sash & Doors - Roofing
Custom Millwork

Phone S-4102
3300 Lower Huntington Rd.
Fort Wayne, Ind.

Your Neighborhood Health Center

SCHMIDT PHARMACY

4001 South Wayne Ave. HA-0620

Pharmacists:

ED SCHMIDT

JOHN HINTON



230 E. Wayne St.

GOOD FOODS AT POPULAR PRICES
BANQUETS, DINNER, LUNCHEONS



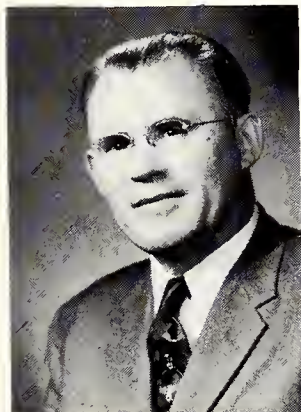
907 W. Lincoln Ave.
New Haven, Indiana



3204 N. Anthony

HOBBY HOUSE RESTAURANTS

FIRST MISSIONARY CHURCH



Rev. Cornelius Vlot
Pastor

SUNDAY SERVICES

9:30 a.m. Sunday School
10:30 a.m. Worship Service
6:15 p.m. Fellowship Hour
7:00 p.m. Evangelistic Service

MIDWEEK SERVICE

7:30 p.m. Wednesday

BROADCASTING

7:30 a.m. Sunday - W.O.W.O.

Thomas K. Zehr
Associate Pastor

Mrs. Ronald Hodgin
Director of Youth

BIBLE TRUTH BOOKSTORE

Across the corner from the college



BOOKS

BIBLES

STUDY HELPS

TEACHING AIDS

MUSIC

THE GOSPEL TEMPLE BOOKSHOP

117 East Rudisill Blvd.
Fort Wayne 5, Indiana

COMPLETE LINE OF CHRISTIAN SUPPLIES

Bibles, Testaments, Devotional Books,
and Magazines

Sunday School Materials, Cards, and Church
Supplies

Sheet Music, Songbooks, and Recordings

Special Discount to F.W.B.C. Students



SOUTH WAYNE EVANGELICAL UNITED BRETHREN CHURCH

To all who mourn and need comfort--to all who are weary and need rest--to all who are friendless and wish friendship--to all who pray and to all who do not, but ought--to all who sin and need a Saviour, and to whosoever will--this church opens wide the door and in the name of Jesus, the Lord, says WELCOME.

Rev. Frank L. Engle
Pastor
3500 South Wayne Avenue HA-4136



FIRST BRETHREN CHURCH

We preach
Christ
crucified, risen,
and coming again

3326 South Calhoun HA-1065



Rev. M.E. Malles
Pastor

C O N G R A T U L A T I O N S C L A S S O F ' 6 1

There's a wide and open door
In the whole wide world to-day;
God is working everywhere,
Let us work while still we may.
Walls are falling all around;
God is marching on before;
Let us follow where He leads
Into every open door.

--A.B.S.

May God's richest blessings
rest upon your lives and work.

THE CHRISTIAN AND MISSIONARY ALLIANCE INTERNATIONAL HEADQUARTERS

260 W. 44th Street, New York 36, N.Y.



CONGRATULATIONS,
WE WELCOME YOU TO

MISSIONARY

National Headquarters
West Rudisill at South Wayne

SERVING THE WORLD AT HOME AND ABROAD. . .

FOREIGN DEPARTMENT. . .
Rev. C. I. Birkey, Secretary

- . Supporting a staff of 100 missionaries in 20 countries.
- . The principle of pioneering in unevangelized fields and establishing indigenous churches.
- . Publicizing world-wide missions and enlisting prayers, funds, and personnel through "World Mission's Rallies"

HOME DEPARTMENT. . .
Rev. C. R. Gerig, Secretary

- . Establishing and building a strong testimony in the local church.
- . Evangelizing the lost through a constant spirit of revival.
- . Entering new fields through a strong extension program.

SEE THE PRESIDENT OR ONE OF THE DEPARTMENTAL

"CLASS OF 1961!"
CONSIDER WORKING WITH THE

CHURCH ASSOCIATION

Rev. Tillman Habegger, President

ADDITIONAL CHANNELS OF SERVICE.....

SUNDAY SCHOOL. . .

Building the church through the Sunday School

PUBLICATIONS. . .

Bookstore, "The Missionary Worker" and the BETHEL-
Bible Truth Series

MISSIONARY YOUTH FELLOWSHIP. . .

Providing the best available advantages to youth

CHILDREN'S WORK. . .

Instructing children in Bible knowledge and Christian
practice

MEN'S MISSIONARY FELLOWSHIP. . .

"PALS" program, soul winning, and the M.C.A. Invest-
ment Foundation

WOMEN'S MISSIONARY SOCIETY. . .

For fellowship, prayer, and promoting missions

FORT WAYNE BIBLE COLLEGE. . .

Founded by The Missionary Church Association more
than a half-century ago

OBJECTIVES. . .

- . The promotion of fellowship among God's people every-
where.
- . The deepening of the spiritual life in the believer.
 - . The cooperation of the churches in the propagation
of the gospel at home and abroad.

SECRETARIES FOR SERVICE OPPORTUNITIES



Congratulations



Seniors

STUDENT DIRECTORY

ADAMS, FAYE 3714 Shady Ct. Fort Wayne, Indiana	308 E. Main St. Montpelier, Ohio	Crystal River, Florida	CADARET, VIRGINIA 1126 W. Lexington St. Fort Wayne, Indiana	DAY, JUDITH 307 W. Marietta Peoria Heights, Illinois
ADAMS, JESSE 1015 E. 11th St. Chattanooga, Tennessee	BEOUGHER, WILLIAM RR #1 Lancaster, Ohio	BOWSER, JOYCE RR #4, Box 249 Lima, Ohio	CALLISON, DONALD 4225 S. Wayne St. Fort Wayne, Indiana	DEASON, BONNIE 22020 Francis St. Clair Shores, Michigan
AKERS, DONNA 412 W. DeWald St. Fort Wayne, Indiana	BERGGREN, M. DAVID 2213 E. Brill St. Phoenix, Arizona	BRANDENBURG, NORMA 800 W. Rudisill Blvd. Fort Wayne, Indiana	CAMERON, HEATHER Apartado 47, La Cuba Honduras, C. A.	DeMERCHANT, PAUL 223 N. Alexander Royal Oak, Michigan
ALLEN, PEGGY 53 Brinkerhoff Ave. Mansfield, Ohio	BERRY, ELEANOR RD #1 Elmer, New Jersey	BRANDENBURG, RALPH 800 W. Rudisill Blvd. Fort Wayne, Indiana	CAMPBELL, ELIZABETH Barneveld, Wisconsin	DERRETH, CAROLYN 2017 Druid Park Dr. Baltimore, Maryland
AMSTUTZ, CAROLYN 521 S. 13th St. Decatur, Indiana	BERTOLET, R. GENE 414 1/2 W. Creighton Fort Wayne, Indiana	BRETZ, GEORGE 225 S. Greenfield Waukesha, Wisconsin	CAMPBELL, ROBERT M. Barneveld, Wisconsin	DISSINGER, MARILYN RR #2 Auburn, Indiana
ANDERSON, MARILYN 2730 Oliver St. Fort Wayne, Indiana	BERTY, SHIRLEY 334 Madison Ave. Falls Creek, Penna.	BRINCEFIELD, LARRY 702 Wayne Trace Fort Wayne, Indiana	CANTRELL, LARRY 548 E. Wilson Blvd. Hagerstown, Maryland	DOWDY, DONALD 131 E. 55th Place Gary, Indiana
APPLEGATE, ANN RR #1 Antwerp, Ohio	BINKLEY, STEPHEN RR #3, Box 92 Celina, Ohio	BRISTOL, JOHN 307 Pingree Royal Oak, Michigan	CANTRELL, MARY 548 E. Wilson Blvd. Hagerstown, Maryland	DYCK, DAVID 266 Van Buren Berne, Indiana
ARMSTRONG, ELAINE 18 N. Seventh St. Hamilton, Ohio	BIRKEY, ARLAN RR #2 Delavan, Illinois	BROOKS, NANCY RR #1, Box 391 Gibsonia, Pennsylvania	CASH, NANCY 2531 Darlene Ct. Fort Wayne, Indiana	DYCK, DONALD 266 Van Buren Berne, Indiana
ARMSTRONG, JAMES RR Fayette, Ohio	BLACK, GEORGIA RR #1 Woodburn, Iowa	BROWN, MARTHA W. First St., Box 208 Spring City, Tennessee	CASWELL, CORA RR #2 Fremont, Indiana	DYE, CORAL 604 Pierce Ave. Fort Wayne, Indiana
ASHLEY, WILLIAM 1713 W. Fairmount Phoenix, Arizona	BLEY, CARROL 906 Illsley Dr. Fort Wayne, Indiana	BROWN, NANCY 2037 Green Creek Rd. Muskegon, Michigan	CHRISTIAN, WESLEY 4018 Buell Dr. Fort Wayne, Indiana	DYE, SANDRA 5603 Northcliff Cleveland, Ohio
BAHLER, MABEL 3301 1/2 S. Lafayette Fort Wayne, Indiana	BLODGETT, ALICE 412 Hall St. Charlotte, Michigan	BRYANT, RAYMOND 1209 Crescent Ave. Fort Wayne, Indiana	CLAPPE, CAROLYNNE 851 S. Walnut St. Bryan, Ohio	DYKE, RICHARD 6125 W. 54th St. Parma, Ohio
BAKER, J. MAXINE 945 Harris Ave. Bucyrus, Ohio	BLOMQUIST, JAMES RR #1, Box 151 Harvard, Illinois	BUCHANAN, PHILIP RR #1 Lyndon, Ohio	CLARK, EILEEN 7 West Ave. Kingston, Jamaica	EASH, CLARENCE 933 Illsley Dr. Fort Wayne, Indiana
BAKER, JUDITH RFD #2 South Whitley, Indiana	BLOOMER, JANICE RR #1 Delta, Ohio	BURD, DONNA 2716 1/2 S. Wayne Ave. Fort Wayne, Indiana	CLARK, ESTHER 1233 Clark St. Fort Wayne, Indiana	EBERSOLE, JAMES 1503 Paulding Rd. Fort Wayne, Indiana
BARCANIC, TORREY 7655 Farragut Chicago, Illinois	BLUE, VERNON Baker Street East Peoria, Illinois	BURKS, DALE RR #2 Manito, Illinois	CLAUSER, JAMES 3934 Fairfield Fort Wayne, Indiana	EBERSOLE, SHARON 5214 Bowser St. Fort Wayne, Indiana
BASEL, ROSEMARIE G 6470 Fenton Rd. Flint, Michigan	BODINE, WILLIAM 1206 Orchard Fort Wayne, Indiana	BURLEY, LUELLE 3901 S. Wayne Ave. Fort Wayne, Indiana	COONEY, SARA RR #2 Camden, Michigan	EICHER, DAVID 906 Illsley Dr. Fort Wayne, Indiana
BAUGHMAN, RUTH 218 E. Main St. Frontier, Michigan	BOKEL, JOSEPH RD #1 Broadalbin, New York	BURR, SHIRLEE 19866 E. Ida Lane Grosse Point, Michigan	COPELY, JANET RFD #1 New London, Ohio	EICHER, LARRY 1140 Sheridan Ct. Fort Wayne, Indiana
BELL ALBERT 2611 Broadway Fort Wayne, Indiana	BOLLES, ESTHER 228 Emmand Elmira Heights, New York	BUTCHER, SHARON RR #5 Columbia City, Indiana	CORDIER, FRANKLIN 670 N. Sugar St. Celina, Ohio	EICHER, WENDELL 1140 Sheridan Ct. Fort Wayne, Indiana
BELL, CLAUDIA 2116 E. 37th St. Anderson, Indiana	BOLLINGER, VONDA RR #1 Shipshewana, Indiana	BUTTS, JOYCE 427 W. Wiley Ave. Buffton, Indiana	CRAMER, JERRY RR #5 Midland, Michigan	ELLIOTT, H. CHARLES 6810 Bluffton Rd. Fort Wayne, Indiana
BELL, KARL 2708 W. 25th St. Anderson, Indiana	BORN, LARRY RR #4 Columbia City, Indiana	BYERLY, CYNTHIANN 16 Webster Ave. Irwin, Pennsylvania	CRAWFIS, WARREN RR #3 Owosso, Michigan	ELLIS, MARY 1402 Alabama Lafayette, Indiana
BELL, MARY 2611 Broadway Fort Wayne, Indiana	BOURN, CALVIN 825 1/2 Cottage Ave. Fort Wayne, Indiana	BYRD, RAMONA 4660 Warsaw St. Fort Wayne, Indiana	DAVIS, CHARLES RFD #1 De Graff, Ohio	EWERT, CAROLYN Broadway Newton, Kansas
BENJAMIN, VELMA	BOWMAN, LYNN General Delivery	CADARET, HOWARD 1126 W. Lexington St. Fort Wayne, Indiana	DAY, DEANNA 1600 Morgan Terrace Beloit, Wisconsin	

FALB, MARTHA 3711 Arlington Fort Wayne, Indiana	Evergreen Trailer Ct. Fort Wayne, Indiana	Butler, Indiana	HONTZ, CLAIRE RR #1 Kimmell, Indiana	Colorado Springs, Colo.
FASSLER, JAMES Vandervoort, Arkansas	GORDON, JAMES RR #2 Payne, Ohio	HARNDEN, PAULINE 89 W. Madge Hazel Park, Michigan	HORROCKS, GAIL 127 Powell Rd. Springfield, Pennsylvania	KEY, JAMES 927 Nuttman St. Fort Wayne, Indiana
FETTER, NANCY 4019 Harding Highway Lima, Ohio	GOTTSCHALK, EILEEN 730 Oakdale Dr. Fort Wayne, Indiana	HARRIS, CAROLYN 455 Bingham Hamilton, Ohio	HORTON, FRANCES 326 N. Fifth St. Hamilton, Ohio	KIPP, JAMES 517 N. Edgeworth St. Royal Oak, Michigan
FEURER, HANNI c/o A. Kirchoff Willowlane Linwood, Michigan	GRABER, CAROLYN RR #1 Geneva, Indiana	HARRIS, JANICE 815 Graceland Ave. Barberton, Ohio	HOWARD, BARBARA 611 De Villen Royal Oak, Michigan	KITCHEN, JOHN RR #1 Rome City, Indiana
FORBES, RICHARD 507 S. Martha St. Angola, Indiana	GRABER, FRANK 3147 Broadway Fort Wayne, Indiana	HARTUNG, PATRICIA 2519 Sherman St. Fort Wayne, Indiana	HUGHS, CAROL Bucklin, Kansas	KLEINHEN, JOYCE RR #1 Ney, Ohio
FORD, DUANE Deerwood, Minnesota	GRABER, LINDA 3147 Broadway Fort Wayne, Indiana	HATCHER, HAROLD 2502 Harrison Fort Wayne, Indiana	HUISMAN, ROBERTA 521 Kinsmoor Ave. Fort Wayne, Indiana	KLOPFENSTEIN, DAVID 379 Sprunger St. Berne, Indiana
FORRESTER, RICHARD RR #5 Columbia City, Indiana	GREENE, DOLORES 901 1/2 E. Lewis St. Fort Wayne, Indiana	HATMAKER, PHILIP 1015 W. Drayton St. Ferndale 20, Michigan	INNIGER, HELEN RR #1 Monroe, Indiana	KNEUSS, ANTHONY 817 W. Logan St. Celina, Ohio
FOWLER, PATRICIA 2311 Denison Ave. Cleveland, Ohio	GRIFFIS, EILEEN 6910 Lincoln Hwy. E. Fort Wayne, Indiana	HAYDEN, ERNEST 2047 1/2 Fairfield St. Fort Wayne, Indiana	INOUYE, GARY P. O. Box 24, Kalaheo Kauai, Hawaii	KOBAYASHI, STANLEY P. O. Box 687, Koloa Kauai, Hawaii
FREEMAN, PHILLIS 20980 Newman Trenton, Michigan	GRIFFIS, GARY 6910 Lincoln Hwy. E. Fort Wayne, Indiana	HAYES, FORREST 2812 1/2 Gay St. Fort Wayne, Indiana	JACOBSEN, KATHLEEN 366 Hendricks Berne, Indiana	KOLIBOB, RONALD 608 Coralie Hamilton, Ohio
FUELLING, LYNN Box 157 Monroeville, Indiana	GUDEMAN, MARY 4718 Stellhorn Rd. Fort Wayne, Indiana	HEBBLETHWAITE, GLENDA Box 282 Edon, Ohio	JACOBSEN, MORRIS 5821 Cree Vancouver 15, B. C.	KRAFT, ORENE 311 Alexander St. Plymouth, Ohio
FURMAN ELIZABETH 2716 1/2 S. Wayne Ave. Fort Wayne, Indiana	GUSHIKEN, HUGH P. O. Box 672, Koloa Kauai, Hawaii	HEFFNER, KAREN 308 S. Washington St. Van Wert, Ohio	JACOBSON, DAVID 3919 N. 39th St. Milwaukee, Wisconsin	KRANICH, BEATRICE 211 Pine St. Rochester, Michigan
GALLAGHER, GRETCHEN 1105 W. Packard Fort Wayne, Indiana	GUSTAFSON, MARLA 2433 11th Ave. S. Minneapolis, Minnesota	HELMICK, EDNA 914 Sixth St. Modesto, California	JOHERL, DOROTHY 11902 Hamlen Cleveland 20, Ohio	KRAUSE, DARLENE 2044 McLean St. Flint, Michigan
GEORGE, MARY 3929 S. Wayne Ave. Fort Wayne, Indiana	HACKNEY, DOROTHY 48 N. Fifth Ave. Fruitport, Michigan	HENNESSEE, RUTH RR #4 Mt. Pleasant, Iowa	JOHNS, GORDON 3811 Indiana Ave. Fort Wayne, Indiana	KRAUSE, RONALD 2044 McLean St. Flint, Michigan
GERBER, PHILIP RR #1 Berne, Indiana	HAFER, CRYSTEL RR #1 Allen, Michigan	HIERHOLZER, KATHRYN 622 N. Main St. Celina, Ohio	JOHNSON, ELEANOR 428 E. Arnold St. Bluffton, Indiana	KULP, PAUL P. O. Box 10 Frankfort, Indiana
GERIG, BETTY 7611 Kingsway Dr. Fort Wayne, Indiana	HAKE, DOLORES RR #2 Edon, Ohio	HIRSCHY, ELDON D. RR #1 Colon, Michigan	JOHNSON, GILFORD 3115 Dexter Dr. Fort Wayne, Indiana	LANDES, RUTH 815 Alexandria Ave. Anderson, Indiana
GERIG, CHARLOTTE Grabill, Indiana	HALBERT, LOWELL 2940 1/2 Broadway Fort Wayne, Indiana	HIRSCHY, NEVA 568 E. Water St. Berne, Indiana	JOHNSON, JAMES 306 Mary St. Union City, Michigan	LANTZ, KARIN Box 12 Pettisville, Ohio
GERIG, DONALD Box 1537 Yoder, Indiana	HALBERT, RUTH 2940 1/2 Broadway Fort Wayne, Indiana	HOAK, KATHRYN 1481 Falahee Rd. Jackson, Michigan	JOHNSON, YVONNE 438 Arcadia Ct. Fort Wayne, Indiana	LARNARD, JAMES 203 E. Brookfield East Lansing, Michigan
GERIG, JOYCE 800 W. Rudisill Blvd. Fort Wayne, Indiana	HALL, JUDITH RR #1, Box 133 Yorktown, Indiana	HODGIN, RONALD 4713 Fairfield St. Fort Wayne, Indiana	KABLE, MARY RR #3 Celina, Ohio	LAYMON, ANITA RR #1, Box 38 Acton, Indiana
GERIG, WILLIAM 800 W. Rudisill Blvd. Fort Wayne, Indiana	HAMILTON, KATHLEEN 211 N. Alexander Royal Oak, Michigan	HOEFAKKER, GILBERT JR. 2510 Sheridan Rd. Fort Wayne, Indiana	KANESHIRO, NAOMI P. O. Box 758, Koloa Kauai, Hawaii	LEAS, JULIANN RR #2 Columbia City, Indiana
GIGIOUS, HARRY 116 S. Sherman St. Warsaw, Indiana	HAMMON, OTHELLA RR #15, Grove Dr. Fort Wayne, Indiana	HOFFMAN, ANITA RR #1, Box 110 F Spring Lake, Michigan	KELLEY, MARIE RR #6 Hillsboro, Ohio	LEFEBVRE, MONIQUE 15392 Pomona Ave. Detroit, Michigan
GILPIN, HARRY	HANKEY, CAROLYN RR #1	HOLDEN, SHERRIL 201 N. Keystone Sayre, Pennsylvania	KERLIN, NAOMI 2425 N. Chestnut	LEHMAN, ANNA 900 Albert St. Lima, Ohio

LEHMANN, MARILYN 605 Van Buren St. Berne, Indiana	2752 Ninth St. Wyandotte, Michigan	Montpelier, Ohio	OECHSLE, AUDREY 234 Lincoln Hwy. W. New Haven, Indiana	689 Hayes Hagerstown, Maryland
LESLIE, LYNNETTE 524 E. Scott Grand Ledge, Michigan	McAHREN, JOHN 1222 W. Madison Decatur, Indiana	MONTEI, JUDITH RR #4 Caro, Michigan	OLESON, JANICE 39 22 15 B Moline Illinois	RAMLAL, DILASIE 506 W. Water St. Berne, Indiana
LINE, JAMES 4030 S. Wayne Ave. Fort Wayne, Indiana	McCRACKEN, HOWARD 401 S. Washington Van Wert, Ohio	MOREHEAD, RONALD RR #2 Continental, Ohio	ONSTOTT, DORTHA 3215 Hannibal Butte, Montana	RANES, PAUL TIMOTHY 800 W. Rudisill Blvd. Fort Wayne, Indiana
LINE, JUNE 4030 S. Wayne Ave. Fort Wayne, Indiana	McCREA, CECELIA RR #2 Pioneer, Ohio	MORLEY, TAMARA 3811 Indiana Ave. Fort Wayne, Indiana	OSBORNE, GRANT 4502 Kenilworth Fort Wayne, Indiana	RASHLEY, DOLORES RR #2 Delta, Ohio
LINE, KATHLEEN 627 S. Connecticut Royal Oak, Michigan	McCRUM, HARRY RR #1 St. Joe, Indiana	MORRIS, RACHEL RR #8, Box 193 Defiance, Ohio	PARSON, JUDITH Box 165 St. Francisville, Ill.	REBSAMEN, HELENE 15-02 146 Place Whitestone, New York
LUMSDEN, JUDY Box 114 Ridgeway, Wisconsin	McDONALD, CHARLOTTE RR #3 Albion, Indiana	MOSER, HOWARD 4030 S. Wayne Ave. Fort Wayne, Indiana	PEDERSEN, ELLEN 3406 N. Osage Chicago, Illinois	REICHARD, MARILYN P. O. Box 350 Hollidaysburg, Penna.
LUPTON, MARY 2008 Hart St. Dodge City, Kansas	McFARLAND, CAROL 1902 Cora St. Wyandotte, Michigan	MOSER, NORMA 327 N. Central Ave. Lima, Ohio	PERRY, CAROLINE Columbia, South America	RETTIG, NEAL 750 Loomis St. Jackson, Michigan
LYMAN, DORILDA 320 W. 11 Mile Rd. Royal Oak, Michigan	McQUEEN, ROBERT 5415 S. Hanna St. Fort Wayne, Indiana	MOSER, RUTH 4030 S. Wayne Ave. Fort Wayne, Indiana	PERRY, MARY 523 Kinsmore Ave. Fort Wayne, Indiana	RICE, DONALD 3203 Sand Point Rd. Fort Wayne, Indiana
MAGGART, ELAINE 416 1/2 Agnes St. Fort Wayne, Indiana	MEAD, VIVIAN R 931 Clay St. Scranton 10, Penna.	MOSIER, LINDA RR #3 Columbia City, Indiana	PERRY ROBERT 523 Kinsmore Ave. Fort Wayne, Indiana	RICE, EVA 3203 Sand Point Rd. Fort Wayne, Indiana
MAGNUSON, ALAN 204 Harrison Valparaiso, Indiana	MEIER, SHARON RD #1 Louisville, Ohio	MOWERY, RALPH 2212 Roy St. Fort Wayne, Indiana	PERSONS, JUDY Union Street Woodburn, Indiana	RICE, PHILLIP RR #5 Princeton, Illinois
MANN, EDNA MAE 4806 Eichorn Ave. Cleveland, Ohio	MESSICK, ALVERNA 4122 Avondale Dr. Fort Wayne, Indiana	MULLANS, PEARL 2450 Randall Dr. Fort Wayne, Indiana	PETERSON, LOWELL Gibbon Minnesota	RICKNER, JOHN RR #2 Grabill, Indiana
MARQUART, MAURICE 423 E. Sutenfield Fort Wayne, Indiana	MESSICK, EARL 4122 Avondale Dr. Fort Wayne, Indiana	MURRY, SHIRLEY RR #1 Wauseon, Ohio	PIERCE, JOHN 8245 Tindall Rd. Davisburg, Michigan	ROACH, ORVILLE 2825 1/2 Broadway Fort Wayne, Indiana
MARTIN, DOROTHY 1009 N. Waterloo Jackson, Michigan	MESSICK, KAREN 4122 Avondale Dr. Fort Wayne, Indiana	NANTZ, MILBURN 1102 Putnam St. Fort Wayne, Indiana	PIERSON, ZELDA RR #4 Greenville, Ohio	ROBBINS, LOIS 613 W. Locust St. Bloomington, Illinois
MARTIN, HERBERT RR #1 Ossian, Indiana	MEYER, ROY 2315 Shawnee Blvd. Lima, Ohio	NANTZ, SHARON 1102 Putnam St. Fort Wayne, Indiana	PLATT, DARYL 5280 Marshall Arvada, Colorado	ROBBINS, SHARON RR #5 Huntington, Indiana
MARTIN, JO ANNE 1009 N. Waterloo Jackson, Michigan	MILLER, CHARLOTTE 2153 Shawnee Blvd. Lima, Ohio	NEIMAN, ELAINE 915 Fifth St., Juniata Altoona, Pennsylvania	PODLESAK, EDWARD 4117 Vernon Ave. Brookfield, Illinois	RUPP, DAVID C. 3906 Evergreen Waynedale, Indiana
MASER, MARLENE Born Road Au Gres, Michigan	MILLER, DIANE 29 Emmalon Ave. White Plains, New York	NESSETH, JUDY 911 W. Michigan Battle Creek, Michigan	POTTS, VIRGINIA Box 71 St. Francisville, Ill.	RUPP, DOROTHY RFD #2 Bryan, Ohio
MASER, RONALD RR #1 Au Gres, Michigan	MILLER, FABIANA RR #2 Bluffton, Ohio	NEUENSCHWANDER, LORENE RR #1 Berne, Indiana	PRICE, RICHARD RFD #1 Kennedy, New York	RUPP, ELMER E. JR. Wermer St. Wernersville, Penna.
MASTERSON, MARY RR #4 Bluffton, Indiana	MILLER, HENRY 215 Twillo Run New Haven, Indiana	NEUENSCHWANDER, ROBERT 3413 W. Pierce St. Chicago, Illinois	PRISER, FLOYD 3126 Wells St. Fort Wayne, Indiana	RUPP, VINCENT JR. 204 Lincoln St. Swanton, Ohio
MAYS, PAUL 742 Davis St. Fort Wayne, Indiana	MILLER, JANET RR #2 Galion, Ohio	NEUENSCHWANDER, WILBERT RR #1 Berne, Indiana	PROCHASKA, KATHLEEN 1102 Martinique Dallas 23, Texas	SACKETT, LOUISE Box 10 Farmdale, Ohio
MAZARAKI, A. GAIL 2752 Ninth St. Wyandotte, Michigan	MILLER, MAURICE RR #2 Edon, Ohio	NISHIHARA, GLORIA P. O. Box 24, Koloa Kauai, Hawaii	PUSEY, CARMEN 18 Leanagerl Kingston 2, Jamaica	SAMRADY, MARILYN 144 E. Hamilton St. Allentown, Pennsylvania
MAZARAKI, ETHAN	MILLER, RONALD 410 1/2 Empire St.	NISWANDER, DORIS ANN RR #2 Columbus Grove, Ohio	RAINES, WILLIAM	SARVER, JOYCE RR #8, Box 668 Battle Creek, Michigan

SCHIFFERLY, CAROL RR #1, Box 72 Bluffton, Ohio	SMITH, PRISCILLA 1236 Grand Blvd. Hamilton, Ohio	Smith's Creek, Michigan	WADEWITZ, MONICA 2434 Bellevue Dr. Fort Wayne, Indiana	WILL, HAROLD P. O. Box 3 Clarksburg, Indiana
SCHLEIGH, NANCY RR #2, Box 131 Chillicothe, Illinois	SMUTS, ELIZABETH 430 N. Lexington Fort Wayne, Indiana	SWALLOW, SHIRLEY 807 Roosevelt Lima, Ohio	WALLER, EVELYN 14656 Faircrest Detroit 5, Michigan	WILLIAMS, CHARLES RR #2 Churubusco, Indiana
SCHOLFIELD, PHYLLIS 2211 Prairie St. Elkhart, Indiana	SONIUS, PAULINE 3901 S. Wayne Ave. Fort Wayne, Indiana	TABUCHI, RAYMOND P. O. Box 33, Koloa, Kauai, Hawaii	WARSTLER, NANCY 4201 S. Clinton Fort Wayne, Indiana	WILLIAMS, WILLIAM 1311 Maple St. Murphysboro, Illinois
SCHULTZ, PATRICIA 240 N. Franklin St. Washington, Pennsylvania	SONIUS, RONALD 3901 S. Wayne Ave. Fort Wayne, Indiana	TAO, JANE P. O. Box 147, Koloa Kauai, Hawaii	WATSON, CAROL 616 Gilbert Jackson, Michigan	WILLIAMSON, LOIS Latty, Ohio
SEIPLE, DUANE Rockford, Ohio	SPRUNGER, BARBARA RR #7, Wayne Trace Fort Wayne, Indiana	TERUI, EDWIN 4815 S. Monroe St. Fort Wayne, Indiana	WATTERS, CAROL 2350 11th St. Akron 14, Ohio	WINDERS, DOROTHY 7311 John St. Fort Wayne, Indiana
SHADY, DAVID Jackson Center, Ohio	SPRUNGER, RUTH 816 W. Superior St. Fort Wayne, Indiana	TERUI, GLEN 4915 S. Monroe St. Fort Wayne, Indiana	WAUGH, CALVIN 2510 Sheridan Rd. Fort Wayne, Indiana	WINDERS, WILL 7311 John St. Fort Wayne, Indiana
SHAFFER, THOMAS RR #2 Grabill, Indiana	SPRUNGER, STEVE RR #2 Berne, Indiana	TETZLAFF, ERIKA 3833 Second Ave., S. Minneapolis, Minnesota	WEAVER, FLORENCE 3001 Drexel Ave. Fort Wayne, Indiana	WINGROVE, LORRAINE RD #1, Box 25 Connellsville, Penna.
SHANNON, ROBERT 719 S. Division St. Whitehall, Michigan	STALEY, LOIS 6801 S. Calhoun St. Fort Wayne, Indiana	THOMPSON, JUDY 1245 S. 57th St. Milwaukee, Wisconsin	WEDDLE, ALICE 4018 Avondale Dr. Fort Wayne, Indiana	WOLFE, HELEN 504 Peoria St. Dixon, Illinois
SHERMAN, GALE 227 W. Creighton St. Fort Wayne, Indiana	STAUFFER, RUTH 809 Snow St. Smithville, Tennessee	TRUIT, DAVE 804 Kinnaird Fort Wayne, Indiana	WEIKEL, JAMES 5430 Maumee Rd. Fort Wayne, Indiana	YODER, FOREST Woodburn, Indiana
SHOCKNEY, JAMES 4836 S. Hanna Fort Wayne, Indiana	STEINER, BARBARA 543 Kinsmoor Fort Wayne, Indiana	TRUIT, JUDY 3346 N. Elms St. Flushing, Michigan	WELSH, GERALD 1308 1/2 Huestis Fort Wayne, Indiana	ZABEL, ARLENE 7501 W. Foster Chicago, Illinois
SHOLL, DWIGHT RR #1 Edgerton, Ohio	STEINER, DUANE 1538 W. Amelia St. Phoenix, Arizona	TRUSDLE, ELLEN RR #2 Clyde, Ohio	WESNER, WILLIAM 2720 Niles Ave. St. Joseph, Michigan	ZEITER, MARY RFD #2 Montpelier, Ohio
SHOOT, WILLIAM 1217 Charlotte Fort Wayne, Indiana	STEINER, JOHN 908 E. McKinley Phoenix, Arizona	TRUSDLE, JOHN RR #4 Bluffton, Indiana	WHEAT, ROBERT 5906 Atwell Toledo, Ohio	ZIGLER, MAE RD #4 Frederick, Maryland
SIEBERT, ALAN P. O. Box 88 Henderson, Nebraska	STEINER, MARGARET 13518 W. Albain Petersburg, Michigan	TUCKER, SANDRA Box #3 Groveland, Illinois	WHEELER, MERRELL 1503 Paulding Rd. Fort Wayne, Indiana	ZIMMERMAN, DONALD 630 S. Main St. Bluffton, Ohio
SINN, NANCY 300 S. Alp St. Bay City, Michigan	STOUT, DALE 702 N. Walnut St. La Grange, Indiana	UCZEN, LARRY 3420 W. Pierce St. Chicago, Illinois	WHITWORTH, RUTH 1021 Schiller Ave. Louisville, Kentucky	ZIMMERMAN, SHARON K. RR #1 Geneva, Indiana
SKINNER, ROBERT 2444 Sandpoint Rd. Fort Wayne, Indiana	STUBBS, LOIS 1011 E. McKinley Phoenix, Arizona	VALENTIC, CHARLOTTE Greenwood Heights Apt. 20 B Connellsville, Pennsylvania	WHITE, DOROTHY 106 Summit Ave. Hampstead, Maryland	ZIMMERMAN, SHIRLEY RR #1 Box 69 Geneva, Indiana
SMITH, BETTY 4294 W. 28th St. Cleveland 9, Ohio	SUMSER, VIRGINIA 707 Broadway Harrison, Ohio	VORSE, EILEEN Box 13 Platea, Pennsylvania	WIGGIN, GEORGE Albion, Maine	ZIMMERMAN, W. SHARON 218 N. Fifth St. Sterling, Kansas
SMITH, COLLEEN 916 Boggs Ave. Fort Wayne, Indiana	SUTTON, BEATRICE 8214 Yager Rd.	VOSS, ELAINE RR #2, Box 446 Davenport, Iowa	WILKIN, BEULAH RR #2 Convoy, Ohio	

FACULTY AND STAFF

BELTZ, JAMES N.
5344 Gardenview
Fort Wayne, Indiana

BLEY, ADOLPH
906 Illsley Dr.
Fort Wayne, Indiana

BROWN, MRS. MYRTLE
3933 S. Wayne Ave.
Fort Wayne, Indiana

BUMP, MRS. ALVIN
815 Florence
Fort Wayne, Indiana

BYRNE, DR. HERBERT W.
3811 Indiana Ave.
Fort Wayne, Indiana

CONRAD, EUNICE
441 W. Branning
Fort Wayne, Indiana

CUPP, SHIRLEY
3710 Goshen Rd.
Fort Wayne, Indiana

EHLKE, EDITH
3811 Indiana Ave.
Fort Wayne, Indiana

EICHER, CYRIL H.
1140 Sheridan Ct.
Fort Wayne, Indiana

EICHER, P. L.
719 W. Rudisill Blvd.
Fort Wayne, Indiana

ELMER, RICHARD
3811 Indiana Ave.
Fort Wayne, Indiana

FIEDLER, MARTHA
800 W. Rudisill Blvd.
Fort Wayne, Indiana

FRANK, DR. RENE
937 Illsley Dr.
Fort Wayne, Indiana

GALLAGHER, MRS. FERN M.
1105 W. Packard Ave.
Fort Wayne, Indiana

GALLAGHER, RALPH
1105 W. Packard Ave.
Fort Wayne, Indiana

GERIG, IRA
7611 Kingsway Dr.
Fort Wayne, Indiana

GERIG, DR. JARED
827 W. Rudisill Blvd.
Fort Wayne, Indiana

GERIG, JOY
Bethany Hall, College
Fort Wayne, Indiana

GERIG, WESLEY L.
4030 S. Wayne Ave.
Fort Wayne, Indiana

GOTTSCHALK, TRUMAN
730 Oakdale
Fort Wayne, Indiana

HARTER, C. V.
2502 Poinsette
Fort Wayne, Indiana

HOATSON, GRANT
3811 Indiana Ave.
Fort Wayne, Indiana

HOATSON, MRS. GRANT
3811 Indiana Ave.
Fort Wayne, Indiana

ISAAC, ADELLE
4030 Tacoma
Fort Wayne, Indiana

JACKSON, MRS. HELEN
409 W. Masterson
Fort Wayne, Indiana

KERFOOT, WALTER J.
806 Kensington Blvd.
Fort Wayne, Indiana

KING, MRS. GRACE E.
2815 Dexter Dr.
Fort Wayne, Indiana

KING, WALTER E.
2815 Dexter Dr.
Fort Wayne, Indiana

KLOPFENSTEIN, MRS. CELINA
902 W. Rudisill Blvd.
Fort Wayne, Indiana

KLOPFENSTEIN, W. O.
902 W. Rudisill Blvd.
Fort Wayne, Indiana

LEONARD, MRS. DONNA
3811 Indiana Ave.
Fort Wayne, Indiana

LEONARD, E. STANLEY
3811 Indiana Ave.
Fort Wayne, Indiana

LINDSEY, MILLIE
801 W. Rudisill Blvd.
Fort Wayne, Indiana

LUTTON, DONNA
Providence Hall, College
Fort Wayne, Indiana

MILLER, JENNIE
324 W. Creighton Ave.
Fort Wayne, Indiana

MORLEY, O. H.
3811 Indiana Ave.
Fort Wayne, Indiana

MYERS, ROBERT S.
328 W. Oakdale
Fort Wayne, Indiana

POCOCK, CAROLYN
3811 Indiana Ave.
Fort Wayne, Indiana

RANES, MRS. BETTY
Schultz Hall, College
Fort Wayne, Indiana

RANES, HAROLD W.
Schultz Hall, College
Fort Wayne, Indiana

REYNOLDS, EDISON
1010 Illsley Dr.
Fort Wayne, Indiana

RICH, ELEANOR
3811 Indiana Ave.
Fort Wayne, Indiana

SCHMIDT, EVELYNE
3811 Indiana Ave.
Fort Wayne, Indiana

SCHUMACHER, GLADYS
543 Kinsmoor
Fort Wayne, Indiana

SIMPSON, DR. EDWARD D.
3515 Meda Pass
Fort Wayne, Indiana

SIMPSON, DR. FRANCES F.
3515 Meda Pass
Fort Wayne, Indiana

SMITH, ADA
4034 Tacoma
Fort Wayne, Indiana

VLOT, MRS. BERTHA
711 W. Rudisill Blvd.
Fort Wayne, Indiana

WAGNER, MARY ANN
708 West Foster Pkwy.
Fort Wayne, Indiana

WARNER, TIMOTHY
3811 Indiana Ave.
Fort Wayne, Indiana

WEDDLE, FOREST
4018 Avondale Dr.
Fort Wayne, Indiana

WELTY, HERALD J.
4010 S. Wayne Ave.
Fort Wayne, Indiana

WEST, DOROTHY A.
801 W. Rudisill Blvd.
Fort Wayne, Indiana





