

Taylor University

Pillars at Taylor University

TUFW Alumni Publications

Publications for TUFW and Predecessors

11-1-1958

Fort Wayne Bible College Vision

Fort Wayne Bible College

Follow this and additional works at: <https://pillars.taylor.edu/tufw-alumni-publications>

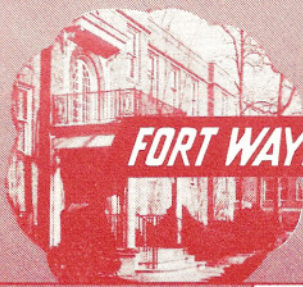


Part of the [Higher Education Commons](#)

Recommended Citation

Fort Wayne Bible College, "Fort Wayne Bible College Vision" (1958). *TUFW Alumni Publications*. 326.
<https://pillars.taylor.edu/tufw-alumni-publications/326>

This Book is brought to you for free and open access by the Publications for TUFW and Predecessors at Pillars at Taylor University. It has been accepted for inclusion in TUFW Alumni Publications by an authorized administrator of Pillars at Taylor University. For more information, please contact pillars@taylor.edu.



ZONING BOARD APPROVES COLLEGE PROJECT

ORATORIO CHORUS TO PRESENT "MESSIAH"

An increasingly hallowed tradition here at FWBC is soon to be strengthened when the oratorio chorus presents Handel's beloved "Messiah" on Sunday afternoon, December 14, at 2:30 in Founders Memorial Auditorium. A capacity audience is expected to hear the choir and soloists under the direction of Miss Betty Stanley of the faculty of the School of Music. Invitations have gone out to the alumni of the area inviting all who have previously sung in this great oratorio to assist the college choir. Miss Stanley is asking that those who plan to sing in the chorus be present for



Wilson

(Continued on Page 2)

L. Shirl Hatfield, Sr., Board Member, Dies

The college has suffered the loss of a faithful friend of many years in the passing of Brother L. Shirl Hatfield on Wednesday, November 5. His funeral was conducted in the Pandora Missionary Church on Friday by his pastor, the Rev. Harlan Wright, with the assistance of Dr. S. A. Witmer. The body was returned to his home community in Laura, Ohio where Dr. J. A. Huffman assisted the pastor in the brief grave-side services.

Mr. Hatfield has held the college in high esteem through the years and was a faithful and valued member of the Governing Board for 20 years. His generosity and sound business judgment will be missed in the future. He had been in failing health for several years and a stroke which he suffered a number of weeks ago, resulted in his death.

Approval Subject to Certain Reasonable Restrictions to be Imposed by Board

The "Journal-Gazette" carried a release in its morning edition on Wednesday, November 19, which began "The Board of Zoning Appeals last night opened the biggest of two doors barring the way for the Fort Wayne Bible College's 22-acre, \$2½ million expansion project." So the Lord has answered prayer again for which we are praising Him here on campus.

The article continued by saying that "The Board adopted a resolution declaring the Bible College use of the acreage . . . 'essential and desirable to the public convenience and welfare'." As to the second door the Board granted its approval of this first request "subject to the imposition of appropriate conditions regarding the location, character and other features of the proposed structures as are reasonably required to satisfy the purposes of the Fort Wayne zoning ordinance." These conditions which have been agreed upon with the Board will be announced at the Board's December 16 public hearing.

3000 Loyal Friends Goal of New Plan

The desire for the strengthening and improving of the educational program of Fort Wayne Bible College weighs heavily upon the hearts of the Governing Board. In order to bring this desire to full realization in a continuing and expanding measure a new "Living Endowment Plan" is being inaugurated. The plan calls for the enrolling of "3,000 Loyal Friends" of the college who will covenant with God to give at least \$1.00 per month to this fund year after year.

Dr. Jared F. Gerig, president, in announcing this plan, emphasized the fact that greater benefits will be the result to the school from 3,000 contributions of \$1.00 or more per month than from 300 gifts of \$100.00 or more per month. The plan affords the opportunity for a far wider participation than would a plan calling for larger contributions. A larger number of interested backers also means a larger volume of prayer help in addition to the financial assistance.

The need for increased subsidy above tuition is not new at Fort Wayne Bible College. Only about 10 percent of our annual budget is covered by gifts. The average Christian college depends upon gifts from interested friends for 35 percent of their income. Our college has been able to balance its budget for over 50 years on this reduced income

(Continued on Page 3)

Objections to the whole project were voiced by several neighborhood residents in the public hearing before the Board on October 21. In reporting on this hearing the above named paper intimated that the vast majority of those present for the hearing were opponents of the project. This erroneous impression was due in a large measure to the thunderous approval given to the remarks of one of the more emotional arguments against the proposal. However, the college was actually represented by nearly half of those present, and loyal supporters of the college came from such distant points as Berne and Ottawa just to see and hear the proceedings.

As the paper said in its report on the October hearing, the "board's final decision will be strongly concerned with an interpretation of 'public welfare' as used in the zoning ordinance." Since this is indeed true, it is understandable why the board has rendered a decision favorable to the college. Psalm 147:5-7.

From the President's Pen

Dr. Jared F. Gerig



AT THANKSGIVING TIME

It is the Psalmist David who rises to high crescendos of praise and gratitude in many of his Psalms. It was he who said, "Bless the Lord, O my soul: and all that is within me, bless his holy name. Bless the Lord, O my soul, and forget not all his benefits . . ."

It is the great sin of our nation to regard routinely and unconsciously many of our most valued blessings. Life is filled to overflowing with blessings hardly recognized because of the frequency with which they visit us. It is such gifts of God that we are apt to take for granted. It is easy to consider many of these more common, routine benefits of life as a part of life itself, or as belonging to us as a natural heritage. It is a little startling to us to come face to face with the revelation that "every good and every perfect gift is from above, and cometh down from the Father of lights, with whom is no variableness, neither shadow of turning."

Is it not a great art to be intelligently thankful for the common, ordinary, everyday things of life? There would be no greater boon at this Thanksgiving season than to determine to practice that blessed disposition of a fuller appreciation of the routine values of life. Shake up that "matter of course" attitude of yours, and make men to know henceforth that you are determined to forget none of God's benefits.

We deeply appreciate the setting aside of one day by our President calling us as a nation to thanksgiving. Here is a challenge to which we must give a good account of ourselves as Americans. This is more than a holiday; it is a holy day, set aside for common recognition of Almighty God, our need of His Spirit, our dependence upon His mercies, our gratitude for His favors. It is well that we learn that life is not an end in itself, but the end is the praise and recognition of the Giver.

Above all, let us remember that "God hath not dealt with us after our sins, nor rewarded us according to our iniquities." This is the marvel of God's grace, and the highest motive for our praise. Our blessings are not dependent upon our worthiness, but upon God's will; not upon our deserts, but upon His delight. All the more then that we need to come to God with unceasing praise and with heart-felt gratitude.

MESSIAH (From Page 1)
three rehearsals; on Sundays, November 23 and December 7, from 3:00 to 4:00 and Saturday, December 13, at 7:00.

Guest soloists for this year's presentation are to be Mrs. Florence Wilson, soprano, Angola; Mrs. Dorothy Lehman, contralto, Royal Oak, Michigan; Virgil Hale, tenor, St.

Paul, Minnesota; and Henry Simminger, bass, of Fort Wayne.

Mrs. Florence Wilson has taken her training with Camille Robinette Cooper here in Fort Wayne, and is widely known for her solo work in many churches in this area. She has also sung with the American Federation of Musicians Orchestra at the "News Sentinel" outdoor theatre,



and has been a soloist in the presentation of Brahms "Requiem" with the Fort Wayne Philharmonic.

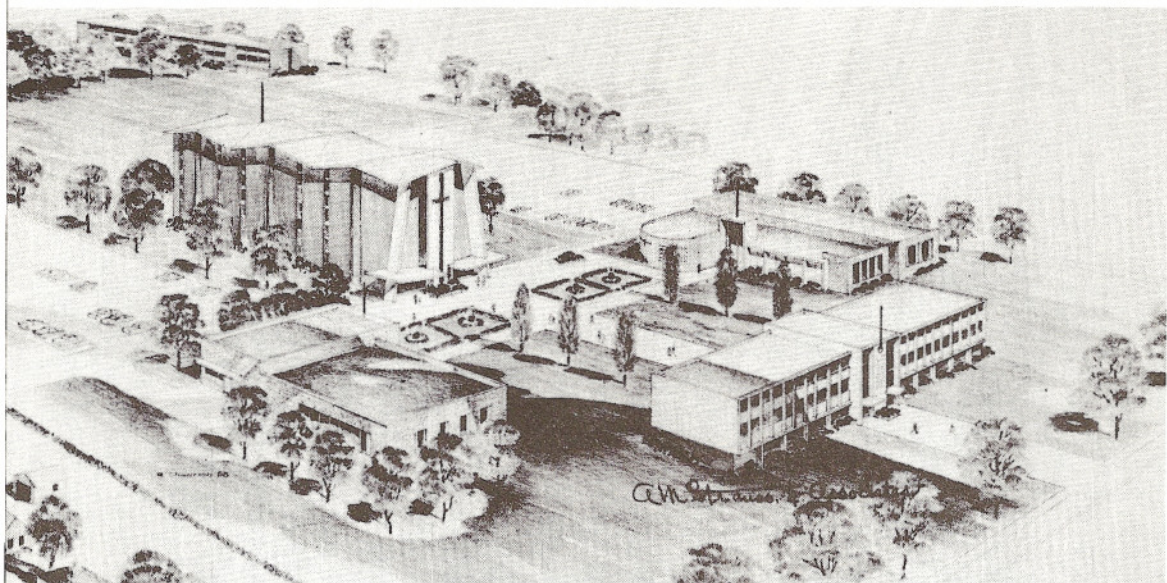
Mrs. Dorothy Lehman, whose husband, the Rev. Gaylord Lehman, is pastor of the Royal Oak Missionary Church in Michigan, is to be the contralto soloist. Mrs. Lehman is an alumna of FWBC and has studied voice in New York. She has had much experience in solo work in concerts and in Christian work. She too, has sung in our college on numerous occasions.

Mr. Virgil Hale, tenor, is from St. Paul, Minnesota where he was formerly director of music at St. Paul Bible College. He has wide experience as guest soloist with many leading symphony orchestras and choirs besides singing across the country in sacred concerts. He has also appeared here in concert and in the "Messiah."

Mr. Simminger is well known in Fort Wayne as a concert artist and guest soloist. He has appeared on our campus on numerous occasions and his rendering of the "Messiah" bass solos is always appreciated.

OUR REGISTRAR REGISTERS

Harvey L. Mitchell and his secretary, Miss Adelle Isaac, were in Muncie, Indiana, at Ball State Teachers College on October 28 for the annual meeting of Indiana Collegiate Registrars and Admissions Officers.



Architect's drawing showing long-range plans for development of FWBC South Campus.

Dr. Frank Writes:

Dr. and Mrs. Rene Frank have been corresponding with various faculty members while they are in Europe on sabbatic leave. They have been in many countries and have had the privilege of attending several Christian conferences. He has described in picturesque language many of the sights they have seen. Of a trip through a part of the Alps he writes: "This little side trip was quite eventful so far. First, an amazing rail journey through the tip of Italy that reaches within the Swiss Alps region, deep gorges, a dam forming an artificial lake, precipitous peaks, with torrential waters coming down. Later through the Rhone valley, called Wallis, where I got explanations from a honeymooning French-Swiss couple who work for the Bible Reading Union in Southern France."

On every hand, it seems the Franks are meeting friends who know friends of theirs here in the states or in Japan. They witnessed to the daughter of a liberal Japanese pastor who knows friends of theirs in Kyoto. They rode with a missionary couple from Geneva to Basel who know Betty Stanley of our music faculty. The Lord is also giving them many opportunities to witness for Him to their relatives in

Plans For Expansion Shown

The original drawing of the plans shown above was displayed at the public hearing before the Zoning Board of Appeals on Tuesday, October 21, on the college's application for permission to proceed with its expansion program.

Rudisill Boulevard may be seen in the lower right hand corner of the drawing while Indiana Avenue with representative houses is pictured in the lower right hand corner. Facing Rudisill is the administrative-educational unit. Behind it and to the right is the library which is scheduled to be the first unit erected, and for which sufficient funds to begin construction are available in cash and pledges. In the lower center is the student union building with facilities for student activities including a cafeteria. Completing the quadrangle is the architect's idea for the chapel which will, upon its completion at some indefinite time in the future, be the central structure of the campus. Dormitories for both men and women are shown in the upper left of the drawing and are placed in the wooded area which borders Lexington Avenue on the south. As already noted, the library is scheduled for construction with all reasonable haste. During its erection efforts will go forth to raise funds for the administrative-educational unit.

Shown on each side of the chapel are parking areas. The one nearest the left edge of the drawing seemed to be the cause of the most of the criticism of the whole plan on the part of residents of the immediate area. There is a strong possibility that these parking areas will be rearranged or modified to make them more acceptable to all interested parties.

various places. Indeed, they are enjoying a very profitable leave in the Lord. They expect to return to the U. S. in January via jet airliner and arrive in Fort Wayne in time for the beginning of the second semester.

FRIENDS (From Page 1)

only by keeping faculty salaries below that paid by many other Christian schools and by keeping needed improvements to a bare minimum.

The entire subsidy of FWBC must be increased if we are to receive the highest accreditation. Accreditation will not only assure our students of a better education, but will also allow a wider selection of graduate schools which will give credit for work done here to those desiring to take graduate work.

You will receive further information on this new "Living Endowment Plan" and a personal invitation to enroll in the very near future.

Athletics in the Bible College?

Some may question the desirability or wisdom of even a limited improvement in the athletic program here at FWBC. And that is a valid question. How far are we going to go with our intercollegiate sports activities?

There has been a strengthening of the athletic program with the coming of Darrell Kraft. Mr. Kraft is an instructor in speech and education besides his duties as athletic director. Under his able leadership the program of intermural sports is being enlarged to include touch football, basketball, volleyball, and soft ball. In telling of the intercollegiate basketball schedule for this winter, Mr. Kraft points out at least three objectives the team has in mind. They are: (1) "To witness for the Lord on the floor and also on Sundays as a team. (2) To enjoy ourselves as we play, and (3) To win."

Mr. Kraft further points out that "As Christians and servants of the Lord it is extremely important that we keep our bodies physically fit in order to do our best for Christ. Someone once said, 'A weak body makes a weak mind and a weak mind makes for a weak spirit.' How we need young men with strong bodies, intelligent minds and with a vital Christian spirit in their lives."

The limited improvement and expansion of our athletic activities in our college is intended to strengthen the mind, the body, and the spirit, not to become an end in itself which will consume time and talent in a great competitive program.



Kraft

Around the campus . . .

DR. PAUL REES CHAPEL SPEAKER

The students and faculty were privileged to hear Dr. Paul Rees, a long-time friend of the college, in chapel on two occasions recently. He spoke on two Wednesdays, October 29 and November 5, coming over both times from the Pandora-Bluffton, Ohio area where he was engaged in the Tri-County Evangelistic Campaign.

FACULTY MEMBER ATTENDS SEMINAR

Claude Stipe, assistant professor of missions and anthropology, attended a seminar for teachers of missions courses at Moody Bible Institute on October 29. The discussions centered around missions curriculum and the counseling of students who are preparing for missionary service.

FWBCers AT WHEATON HOMECOMING

FWBC was well represented at the Wheaton College Homecoming November 1 and 2. Those attending from here were: Dr. J. F. Gerig, Grant Hoatson, Miss Dorothy West, Miss Eleanor Rich, Miss Arlene Mitchell, Robert Hatmaker, Lynn Bowman. Some of these Wheaton visitors called on Mr. and Mrs. Richard (Dick) Gerig in their new home and found them well and busy. "Dick" was the editor of "Vision" and served as Alumni Co-ordinator until his resignation the 31st of August.

CAMPUS CLEANED

A willing crew of workers composed of faculty members and students turned out for the annual campus clean-up on Friday, November 7. Ben Williams, of the students, and John Zurcher, superintendent of buildings and grounds, teamed up to organize and oversee the entire operation. Reports indicate that this was the best organized and most successful clean-up in the memory of most who are on campus. Nearly all of the trees cooperated to the best of their ability by dropping their leaves in time for them to be gathered by the hard-working rakers.

1958-1959 BASKETBALL SCHEDULE

Nov. 15	Sat.	Purdue Extension	State School gym
Nov. 22	Sat.	Southeastern Christian College	at Winchester, Ky.
			(overnight)
Dec. 6	Sat.	Trinity College	at Chicago (overnight)
Jan. 9	Fri.	Grace College Junior Varsity	at State School gym
Jan. 10	Sat.	Malone College	at Canton, Ohio
			(overnight)
Jan. 17	Sat.	Goshen College Junior Varsity	at Goshen
Jan. 28	Wed.	Purdue Extension	at State School gym
Jan. 31	Sat.	Bethel College	at Mishawaka, Indiana
Feb. 7	Sat.	Malone College	at Central High gym
Feb. 13	Fri.	Spring Arbor Junior College	at Spring Arbor, Mich.
Feb. 14	Sat.	Midland School of Commerce	at Central High gym
		(Ashland, Ohio)	

CHRISTIAN UNION PASTORS VISIT

22 pastors, several with their families, from surrounding Christian Union churches were guests on campus on Tuesday, November 11. They attended chapel, visited in various classes, enjoyed lunch with their friends among the student body, and received a preview of the "Messiah" by sitting in for the rehearsal.

DR. GERIG HONORED

Our president has been elected vice president of the Accrediting Association of Bible Colleges it was announced in Chicago during the annual convention of the AABC on October 30 and 31. Dr. Gerig and Dr. Byrne, the dean, attended this two-day conference as representatives of our college.

Vision

FORT WAYNE BIBLE COLLEGE

800 WEST RUDISILL BOULEVARD

FORT WAYNE 6, INDIANA

Vol. 7

Nov.-Dec., 1958

No. 2

Form 3547 requested

FWBC Litho

Non-Profit
Organization
U. S. POSTAGE
PAID
Fort Wayne, Ind.
PERMIT No. 267