

Taylor University

Pillars at Taylor University

Taylor University Bulletin (1912-1963)

Noncurrent Publications

11-1-1913

Taylor University Bulletin (November 1913)

Taylor University

Follow this and additional works at: <https://pillars.taylor.edu/tu-bulletin>



Part of the [Higher Education Commons](#)

Recommended Citation

Taylor University, "Taylor University Bulletin (November 1913)" (1913). *Taylor University Bulletin (1912-1963)*. 394.

<https://pillars.taylor.edu/tu-bulletin/394>

This Book is brought to you for free and open access by the Noncurrent Publications at Pillars at Taylor University. It has been accepted for inclusion in Taylor University Bulletin (1912-1963) by an authorized administrator of Pillars at Taylor University. For more information, please contact pillars@taylor.edu.

Taylor University Bulletin

VOL. 5.

NOVEMBER, 1913

NO. 2.



Entered as Second Class Matter at Upland, Indiana

Winter Term

THE winter term of Taylor University will open Jan. 2nd. This will be an excellent opportunity for young people who failed to get into school in September. Many of the regular classes in Academy and College will continue and a number of new classes will be formed, so that most anyone will be able to find classes suited to his advancement.

How to Find Us

TAYLOR UNIVERSITY is located in Upland, Grant County, Indiana; twelve miles east of Marion; seventy-five north-east of Indianapolis; fifty south of Fort Wayne; on the Pennsylvania Railroad. This is a Chicago and New York line, double track; express trains stop at Upland.



The New Music Hall, Taylor University

Public Lecture Course

IN connection with the regular work of the college an excellent lecture course is maintained. Walter Kunce, a public speaker of excellent ability opened the course on the evening of Nov. 10th. On Nov. 17th the Music and Expression Departments gave their term recital. Prof. G. Francis Lee will give his lecture "With Great Men Through Greece," Rev Loren Edwards, D. D., of Mishawaka, Indiana, gave his lecture of "Europe's Message to America" on Dec. 8th. Other artists and specialists will appear in the course of the year.

Revivals

TAYLOR UNIVERSITY lives on a revival level. When the school opens the revival begins; a number of the students were converted at the regular prayer meeting services. Special revival services, extending over two weeks, in which many souls were saved and sanctified, were held early in the term.



College Ave. (looking South), Taylor University, Upland, Indiana

The College Course

CANDIDATES for admission to the college course must offer fifteen units from a high school or an academy. Applicants who do not lack more than two of the required units may enter the Freshman class on the condition that this will be made up.

The Academy

THE Academy is commissioned by the State Board of Indiana as a high school, this insures its high standard.

School of Expression

ONE of the popular departments of Taylor University is the School of Expression in charge of Prof. Florence E. Cobb. Students of other departments may elect work in this department.

Theological School

THIS school is for ministers, evangelists, missionaries, deaconesses and lay workers. Two courses are offered—the Seminary course, the entrance to which is conditioned on graduation from high school or college; and the English Bible course of three years for those who have graduated from the grades. The degree of B. D. is given to graduates from the college who finish the Seminary course. Students from other departments may elect work in this course.

School of Music

THE School of Music has a building of its own, the beautiful Helena Memorial Hall, made possible by a gift from Mrs. Helena Gehman. A strong course in both vocal and instrumental music is maintained. The Music School is the fullest this year that it has ever been. It is constantly growing larger.

What We Allow

WE allow anything that will go to the building up of a strong moral and spiritual character.

What We Prohibit

WE prohibit anything that will interfere with the regular work of the classes or will tend to the tearing down of character. We mention a few of these; profanity, vulgarity, cards, tobacco, dancing, etc.

What to Bring With You

A Bible, quilts, comforts, sheets, blankets, pillow, pillow cases, towels, napkins, and a small rug for the floor.

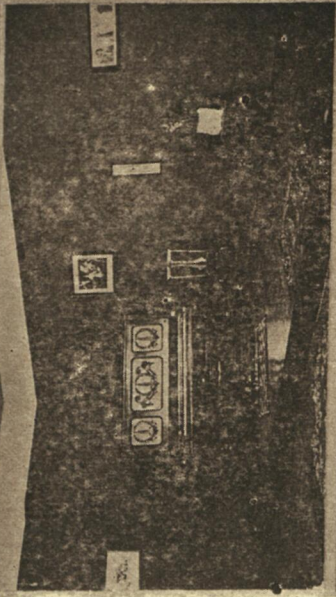
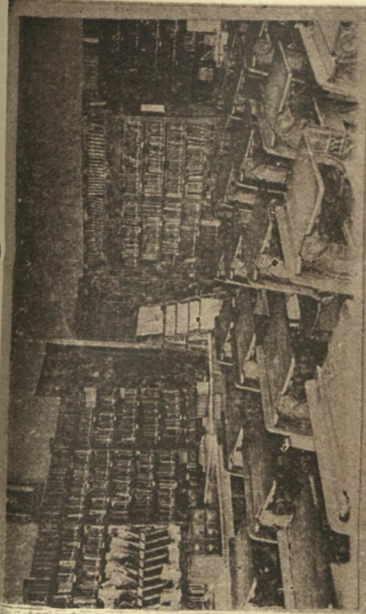


Part of Campus

A Holiness School

THE past year at Taylor University shows the largest enrollment in her history. Extensive improvements have been made which add to the ease and comfort of the students and afford very much greater facilities. Anyone looking for a place to invest the Lord's money would do well to investigate Taylor University. Anyone investing in Taylor University is really investing in humanity. If the Holiness people are anxious for Holiness Schools it is absolutely necessary that they rally to their support. Write to the president of Taylor University about this matter. Send for catalog to

M. VAYHINGER, President
Upland, Indiana



LIBRARY
ORATORY ROOM
SCIENCE LECTURE ROOM.

